



BOM MTBO WRE 2018

BAIRRADA "O" MEETING MTBO WRE

Bulletin 2

**Date:** 15<sup>th</sup> and 16<sup>th</sup> of september2018

**Organizer:** CAB – Clube de Aventura da Bairrada  
FPO – Federação Portuguesa de Orientação  
IOF – Internacional Orienteering Federation  
Municipality of Águeda  
Municipality of Coimbra

### Welcome Message



*Dr. Edson Santos*

*Vice Mayor of Águeda Municipality*

It is with great pleasure that I greet and welcome all participants of Bairrada "O" Meeting MTBO WRE that will take place on 15th and 16th September. Receiving another international event in 2018, Águeda is restating its enormous potential in the two-wheelers.

It is well known the importance that the Municipality of Águeda gives to sport and we are aware that our support in the accomplishment of sporting events is fundamental today, since it represents an essential asset for the development and promotion of the territories.

A word of congratulations and thanks to the organization, national and international athletes.

I end up wishing that the event can be successful within your high expectations and in the certainty that we will do everything to welcome you in the most colorful city of Portugal.

Visit Agueda!

**Organizing Committee:**

Event Director: Carlos Ferreira

Event Secretary: Fátima Saraiva

Maps & Courses: Carlos Ferreira

Event Controlling: Tiago Fernandes

**Information:**

CAB – Clube de Aventura da Bairrada

Av Calouste Gulbenkian 208 RC Fr

3750 102 Águeda, Portugal

Email: [aventurabairrada@gmail.com](mailto:aventurabairrada@gmail.com)

**Stages:**

15<sup>th</sup> September - Saturday – Long Distance – Valongo do Vouga - Águeda

16<sup>th</sup> September - Sunday – Middle Distance – Souselas – Coimbra

**Program:**

3<sup>th</sup> September - Reference prices deadline

10<sup>th</sup> September – Deadline for entries to the competition classes and “online” registration

15<sup>th</sup> September - Long Distance WRE

10:00 – Opening hours of the Event Office at Arena – Valongo do Vouga

12:00 – Start for Long Distance

13:00 – Start for Open Classes

17:00 – Snack offered by parish of Valongo do Vouga

17:30 – Price giving ceremony for Long Distance

16<sup>th</sup> September – Middle Distance WRE

8:30 – Open hours of the Event Office at Arena – Souselas

9:30 – Start for Middle Distance WRE

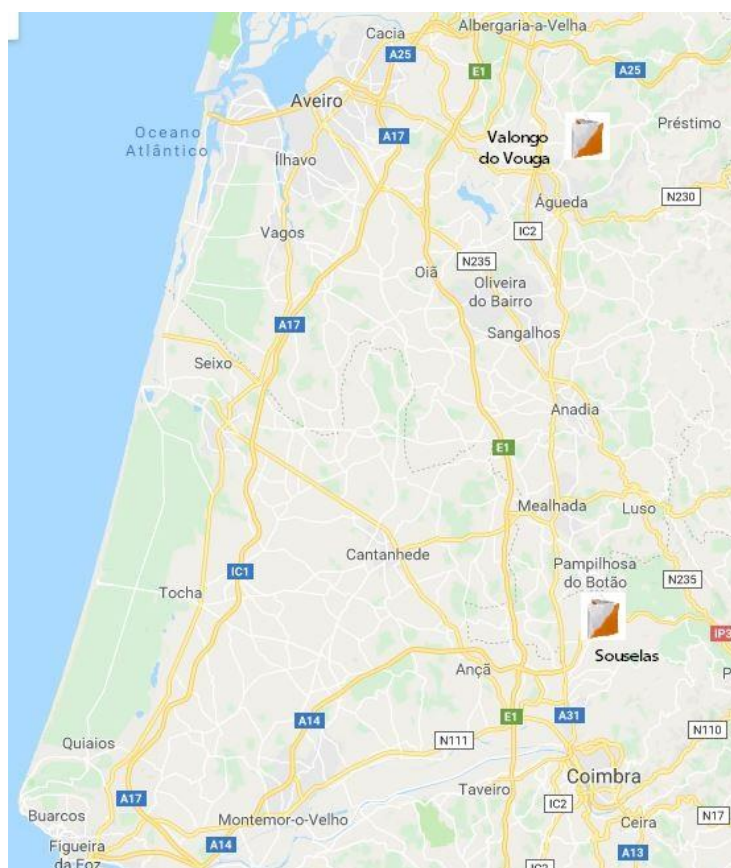
10:00 – Start for Open Classes

13:00 – Price giving ceremony for Middle Distance and BOM MTBO WRE

## Even Center

<i>Valongo do Vouga</i> Águeda	Decimal Degrees	Latitude: <a href="#">40.620363</a>	Longitude: <a href="#">-8.412251</a>
	Degrees, Minutes & Seconds	Latitude: <a href="#">N40° 37' 13.307"</a>	Longitude: <a href="#">W8° 24' 44.104"</a>
	GPS	Latitude: <a href="#">N40° 37.2218'</a>	Longitude: <a href="#">W8° 24.7351'</a>

<i>Souselas</i> Coimbra	Decimal Degrees	Latitude: <a href="#">40.2975251</a>	Longitude: <a href="#">-8.4268533</a>
	Degrees, Minutes & Seconds	Latitude: <a href="#">N40° 17' 51.09"</a>	Longitude: <a href="#">W8° 25' 36.672"</a>
	GPS	Latitude: <a href="#">N40° 17.8515'</a>	Longitude: <a href="#">W8° 25.6112'</a>



### Classes and participation:

MTBO World Ranking Event – W21E and M21E

Extra WRE – W/M15, W/M17, W/M20, W/M21A, W/M40, W/M50, M60, Open Courses

### Entries:

**ELITE CLASSES:** During entry process, Elite runners may provide their IOF World Ranking ID. All the athletes in those classes need to be registered in [IOF Eventor](#).

**EXTRA WRE CLASSES:** For email to [aventurabairrada@gmail.com](mailto:aventurabairrada@gmail.com) or <http://www.orioasis.pt/oasis>

## Entry fees (For stage/person)

<b>Members FPO</b>	<b>before 3 september 2018</b>	<b>4 to 10 de september 2018</b>
< 20 years	3,00 €	4,50 €
> 20 years	6,00 €	9,00 €
W Elite / M Elite	7,00 €	10,5 €
<b>Others (No FPO)</b>	<b>before 3 september 2018</b>	<b>4 to 10 de september 2018</b>
< 20 years	5,00 €	7,50 €
> 20 years	10,00 €	15,00 €
W Elite / M Elite	12,00 €	18,00 €
<b>Open Courses</b>		
< 20 years	5,00 €	
> 20 years	10,00 €	

All payments are to be made to the CAB – Clube de Aventura da Bairrada, as follows (all charges are paid by sender)

Bank name: Montepio Geral (Agency - Agueda)

BIC/SWIFT: MPIOPTPL IBAN: PT50 0036 0020 99100264520 17

## Transport (Extra cost)

We recommend car rental as the best way to move during the event.

Travel by train: If you want to travel by train from Lisbon or Porto

- consult the timetable: <http://www.cp.pt/passageiros/en/>

<http://www.centerofportugal.com/category/plan/travel-agencies-dmc/>

## Accommodation (Extra cost)

Accommodations in Águeda, Mealhada and Coimbra.

<https://www.cm-agueda.pt/pages/201>

<http://www.centerofportugal.com/category/stay/accommodation/hotels/>

## Technical Informationa

Long - 15 September

Start - 1,9 km

Map : 1:15 000

Category	In line - Km	Ideal Route - Km	Clibing	CP	LOOP
L1-H21E/WRE	22,8	34,5	680	30	2
L2-H40	17,6	25,5	540	20	NO
L3-H20-H21A	15,6	24,4	500	19	NO
L4-H50-D21E/WRE	15,5	23,7	480	19	NO
L5-H60-D20-D40	12,7	18,5	370	13	NO
L6-H17-D21A	12,2	16,7	340	14	NO
L7-H15-D15-D17-D50-OM	7,2	10,8	170	18	NO
L8-OL	14,7	21	390	20	NO
L9-Formação	5,8	7,3	105	16	NO

Middle - 16 September

Start - 1,2 km

Map: 1:100 000

Category	In line - Km	Ideal Route - Km	Clibing	CP	LOOP
M1-H21E/WRE	12,7	19	385	29	1
M2-H40	10,8	15,8	290	24	NO
M3-H20-H21A	10,5	15	300	23	NO
M4-H50-D21E/WRE	9,9	15,3	315	23	NO
M5-H60-D20-D40	9,0	12,9	255	19	NO
M6-H17-D21A	8,2	12,1	230	17	NO
M7-H15-D15-D17-D50-OM	6,9	9,7	170	13	NO
M8-OL	10,2	15,2	250	20	NO
M9-Formação	6,6	7,7	140	14	NO

## Time Keeping System

- SPORTident will be used on all events with the SPORTident AIR+ system
- Organization will provide the SI Active Card to athletes.
- Non-returned SIAC`s will have a cost of 80,00 Euros.



- It is the responsibility of the athletes to confirm that the registration at control station happened (sound and light signal).
- We recommend, avoiding failures in the punching process that the athletes pass within 1.5 m of the electronic unit and to move at a speed below 30 km/h.
- We also recommend having the SIAC in an easy place to confirm the flashing light

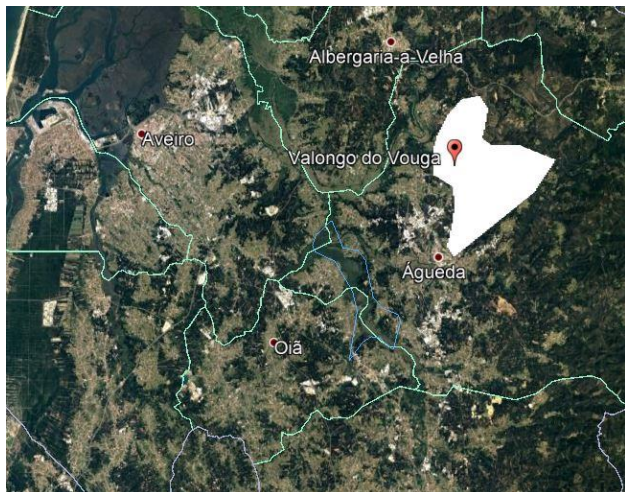
## Maps

Valongo do Vouga MTBOWMOC2016 updated + 50% new – 1:15 000 5m

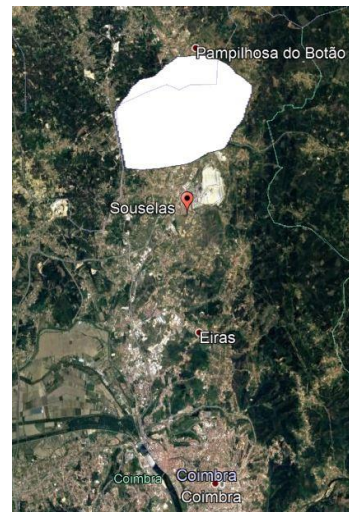
Marmeleira-Souselas – new 1:10 000 5m

## Embargoed areas

The areas are out of bounds for all potential participants and team members, including competitors, team leaders, coaches, doctors, escorts, and any other person who through their knowledge of the terrain may



influence the result of the competitions. The following areas are embargoed during 1<sup>st</sup> april 2018 – 16<sup>th</sup> september 2018. There is no exception. All events will be organized in accordance with the IOF International Specification.



## Terrain description

In the competition areas thorny vegetation can be found. Therefore puncture protection is strongly recommended. All the competition areas are open to public traffic. We don't expect any kind of traffic on the competition area. Riders should follow the instruction of marshals. Still, it is the riders' responsibility to observe traffic rules and avoid unsafe practices.

The Long distance area is a combination of pine and eucalyptus forest; it is a hilly terrain with a dense network of roads and paths, mostly with a good rideability.

The terrain of Middle distance is very varied with pine and eucalyptus forest, vineyards, open and cultivated areas. The climbing is moderated with some steep zones.

## Rules

The event will be organized in accordance with the Competition Rules for IOF MTBO Orienteering Events, and Special Rules for MTB Orienteering World Ranking Event.

Please consult: <http://orienteering.org/mtb-orienteering/rules/>

In this specific event:

- Riding off the track, trail or path is allowed.
- In Portugal one drives on the RIGHT side of road.

Therefore riders must ride on the RIGHT side on all roads and tracks.

## **Anti-doping**

According, the IOF Anti-Doping Code and rules apply as of 1st February 2010.

Please consult <http://orienteering.org/anti-doping/>

## **Health care**

The Organizers will provide first aid at the competition centre and at the arenas of each event.

The Organizers will not bear costs connected to health insurance of participants.

We recommend each individual to arrange their own personal health insurance.

Participants take part at their own risk.

## **Visa**

Countries that who need visas for entering to Portugal: please contact the Portuguese embassy in your country. If a personal invitation from the organizer's is required for the visa, please contact FPO.

## **Media Services**

Media representatives are cordially invited to come to Águeda and Coimbra to cover the World Ranking Event.

Registration for media entry should be made in email by 3<sup>rd</sup> september 2018.

Media facilities will be available only to registered media representatives.

## **Bicycle storage, washing and repair**

Bicycle storage is located in the competition event centre. Access to the bicycle storage will be strictly limited and can only be permitted by presenting your competitor's card.

Bicycle washing facilities will be available, at the arena/ event centre.

We have our official bicycle repair partner who will be working at the arena of the event.

You can rent a mountain bike, if necessary. Contact - [aventurabairrada@gmail.com](mailto:aventurabairrada@gmail.com)

## **Tourisme**

<https://www.cm-agueda.pt/pages/641>

<http://www.turismodecoimbra.pt/patrimonio-mundial/>







# BOM MTBO WRE 2018

*Bairrada "O" Meeting*

September - 15 and 16 . 2018

## Long Distance WRE

**New (part) and Old Map**

Event center: Football Stadium  
of Valongo do Vouga

## Middel Distance WRE

**New Map**

Event center: Educational Institution of  
Souselas(INEDS) - Map of Marmeleira

Mountain bike orienteering | National and World Ranking Event

Organization: Clube de Aventura da Bairrada

Information: <http://aventurabairrada.wixsite.com/bommtbowre2018>

