

MTB-O Competition Information

28.7.2018 Austrian Championship LONG + WRE
29.7.2018 Middledistance +WRE

Welcome!

The Austrian Federation ÖFOL and the team of Naturfreunde Villach Orienteering is glad to welcome you to MTB-O -Weekend in Villach, Maria Gail, Faaker See, Carinthia.

Information for both days: In the folder there is a club list with your starting times. The starting list will also be published at the EC und the starting area. A form for new and change registration is included.

Startbib: has to be fixed on the front side of the bike. Please return startbib no later than Sunday or it will be charged with 15€.

Way to START: Always starting from EC with bike. Way is marked with red/white ribbon. **ATTENTION** –open public traffic inside the village and cycleway.



Warm-up area: only on the way to the start (red/white ribbon).

Starting order (Saturday & Sunday):

3 minutes before start: the SI number will be reviewed

2 minutes before start: clear and check your SI

1 minute before start: Take your map, each competitor is responsible for taking the right map!
Please control the category!

Attention: Timestart conform with Startlist. Free starting times on Saturday from 3 pm and Sunday from 11 am only for beginners, family and open category with START control.

Start-time:

Saturday: 2 pm,

way to the START 2500m +120m steady climbing, paved road in village and cycleway marked with red/white ribbon, **expected time to start 15-25 min**

Sunday: 10 am

way to the START 2300m + 130m steady climbing, paved road in village and 60% in forest marked with red/white ribbon, **expected time to start 15-25 min**

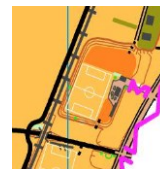
Punching System: SportIdent and SI-Air will be used with a range of 30cm. SI readout at EC

Last finish: Saturday: 7 pm

Sunday: 2 pm

Map start: Saturday 30m and Sunday about 50m away from the time start, the way to the start triangle is marked.

Main road: driving on the main road is strictly forbidden and dangerous because of much traffic. Ways which are not allowed will be marked with zigzag line.



Ways: It is only allowed to use the paths shown on the map. Attention: Many ways are full of roots, especially in rainy conditions in the competition area is very slippery! Falling trees may block paths and known obstacles marked with red lines on the map.. In case of good growing of vegetation some path are less readable.

In case of unclear situations it's marked with red/white ribbon.

Offroad driving and shortcuts are forbidden in Austria. Observers in the area control short cuts, this would cause a disqualification.

Only 2 small dark yellow areas with the symbol 839.3 "rideable area" of the map section are allowed to ride and marked with red/white ribbon.



Barriers are marked with a bar.



If barriers are passable without dismounting the bike, they are slightly displaced drawn.



Always drive on the right hand side und take over on the left hand side!!!!

Prize giving: Saturday. 7 pm Sunday: 2 pm

Map: old map "Dobrova" will be published at EC.

MAP Change: Longdistance for M21E, W21E, M20, M40 print double-sided A3

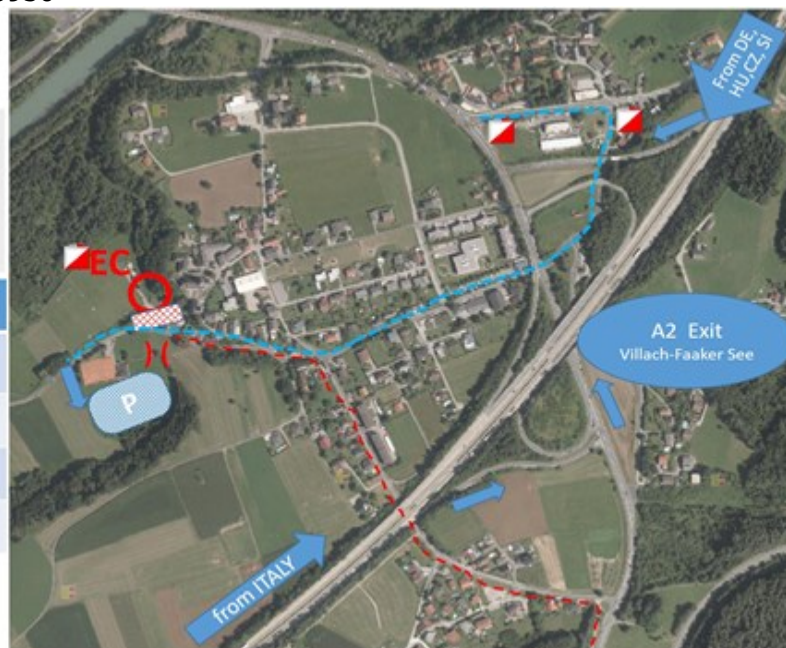
First aid: Health care at EC

Bike wash: at the EC

Shower: at Soccerclub

Catering: HOT/COLD snacks will be offered on both days at the EC with fair prices.

Parking: N 46.598236, E 13.873950



ATTENTION and RESPECT: Keep care by other bikers and walkers and not included people. Roads are not blocked so public traffic is possible. Take care of traffic rules.

Always drive on the right hand side und take over on the left hand side!!!!

The participants take part at their own risk, and have to cope with the responsibility for all self made damages.

We wish you interesting and accident free competition,
for the organisation team:
Event manager and the IOF adviser
Klaus WALLAS / Grega RAJ