



JUNIOR WORLD ORIENTEERING CHAMPIONSHIPS KECSKEMÉT, HUNGARY 2018

Team Officials' Meeting

09.07.2018. SPRINT

Roll call



AUS

ESP

IRL

POR

AUT

EST

ITA

ROM

BEL

FIN

JPN

RSA

SWE

BUL

FRA

LAT

RUS

TUR

CAN

GBR

LTU

SLO

UKR

CRO

GER

NOR

SRB

USA

CZE

HKG

NZL

SUI

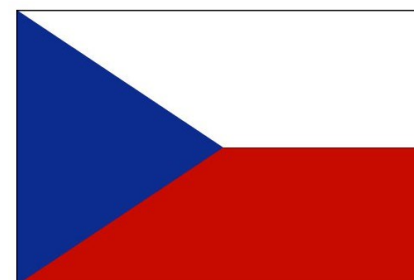
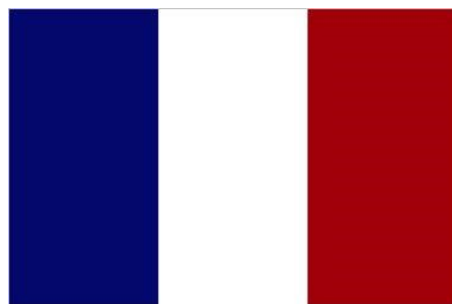
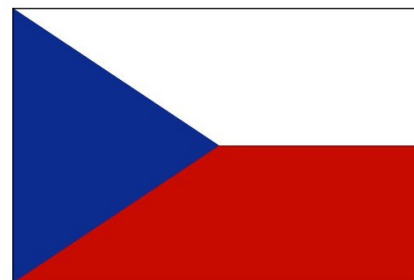
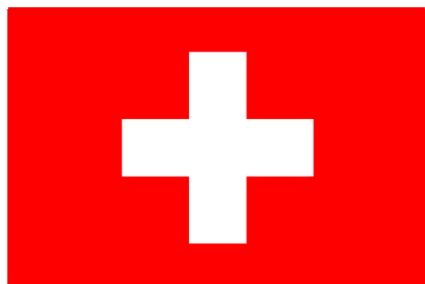
DEN

HUN

POL

SVK

Congratulations!



Platform party



- **Lajos SZOKOL** – Event Director
- **Jari KYMÄLÄINEN** – IOF SEA
- **János SÜMEGI** – National Controller (HUN)
- **János SPIEGL** – Course Controller (HUN)
- **Mónika SZOKOL** – Vice Event Director
- **Tamás GERA** – Secretary General
- **Máté BERECKZI** – Course Planner, Sprint
- **Tibor GERA** – Accommodation & Catering



Material of the day



- Start lists (2 per nation)
- Number bibs – sprint
- Result list
- ~~GPS-vests.~~ They can be collected from 10:00 tomorrow at the Event Office or at the pre-start.



Review of the Long day



- **One competitor was disqualified for not following the compulsory route after the spectator control**
- **Several competitors missed a punch in their SI-cards. Please take special care!**
- **Some competitors switched SI-cards at the start, which made complications for the viewers through internet.**

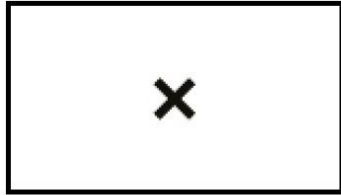
Office Communique



- Please ask competitors to draw their routes to routegadget: <http://rg.mtfsz.hu/cgi-bin/reitti.cgi?act=map&id=984&kieli=>
- There are still some outstanding bills – please settle them
- Clean maps will be available from the start of the live coverage (tomorrow e.g. from 14:15)



Special symbol – sprint



Black x:

**various
man-made
objects**



Detailed programme – Tuesday



- **07:00 – 09:00** Breakfast (Accommodation)
- **11:00 – 14:00** Lunch (Accommodation)
- **12:00** Registration for Wednesday's cultural programme
- **12:15 / 12:20** First bus leaves to the Start
- **14:01** First start – JWOC Sprint
- **14:00 / 14:05** Last bus leaves to the Start
- **17:30 – 18:00** Prize-giving ceremony – Long & Sprint
- **18:10** First bus leaves Arena
- **18:15 – 19:15** Mayor's reception at City Hall
- **18:30 – 20:30** Dinner (Accommodation)

Detailed programme – Wednesday

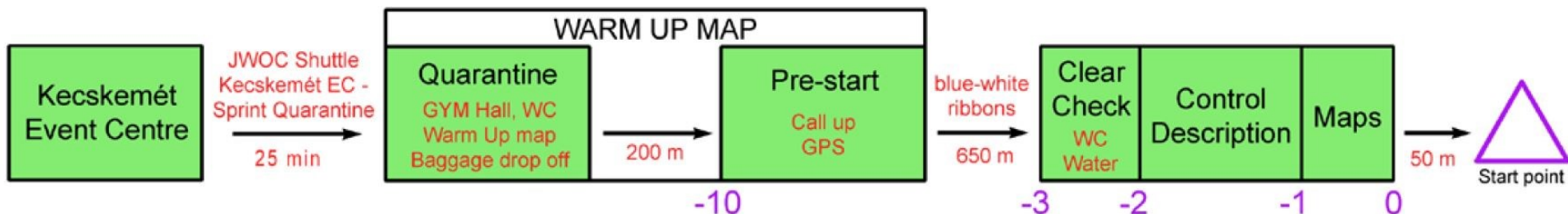


- **07:30 – 10:00 Breakfast (Accommodation)**
- **09:00 – 17:30 Model Events**
- **12:00 Deadline for entries – Middle Distance (Eventor)**
- **12:00 – 14:00 Lunch (Accommodation)**
- **18:00 – 20:00 Dinner (Accommodation)**
- **19:00 – 19:30 Team Officials' Meeting – Middle Q+F**



Sprint

Start



Traffic

Main public roads where courses cross will be closed to vehicle traffic. You might encounter some cars exiting the competition area. The traffic is not closed on the roads which form the perimeter of the competition area.

Transport



- **Bus stop at accommodation „A” tomorrow is 300 metres away from the hotel.**
- **Please gather 5 minutes before the bus start time at the entrance, and you will be escorted to the bus stop.**

Forbidden areas 1.

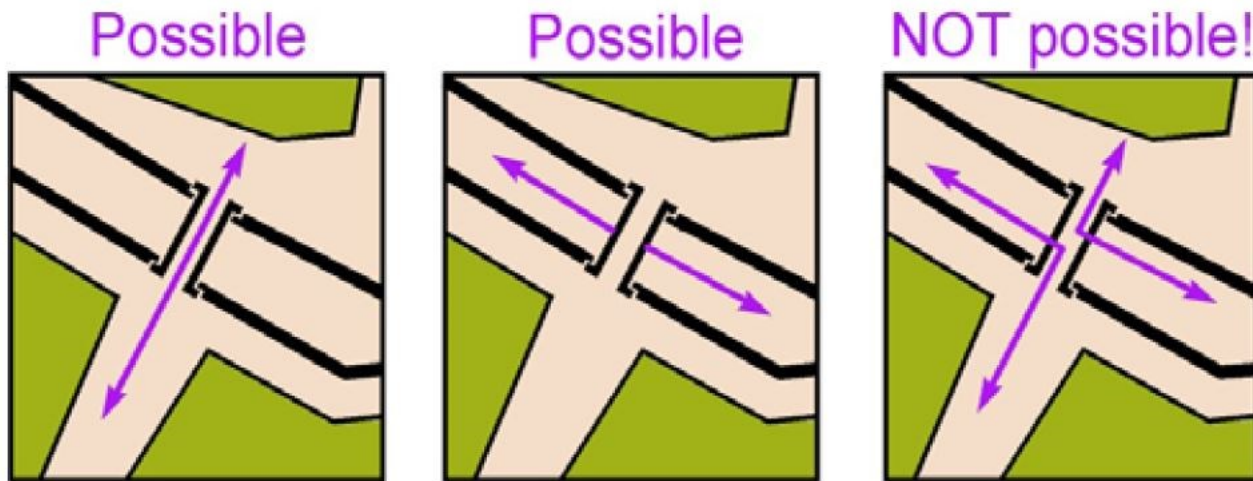


- All dark green areas (100% green & 50% black) on the map are forbidden to cross, represented by ISSOM symbol 421 (impassable vegetation). All hedges that are forbidden to cross are also marked as dark green (ISSOM 421).
- Private areas and flower beds marked as olive green (ISSOM 528.1), impassable vegetation (421), impassable walls (521.1), impassable fences (524) and out-of bounds and forbidden areas (709) are forbidden to enter or cross under the penalty of disqualification, as described in ISSOM.
- Where there is a possibility that such areas or objects may be crossed by mistake, these will be marked by red-and-white tapes in the terrain. Taping was demonstrated on the Technical Model Event.

Forbidden areas 2.



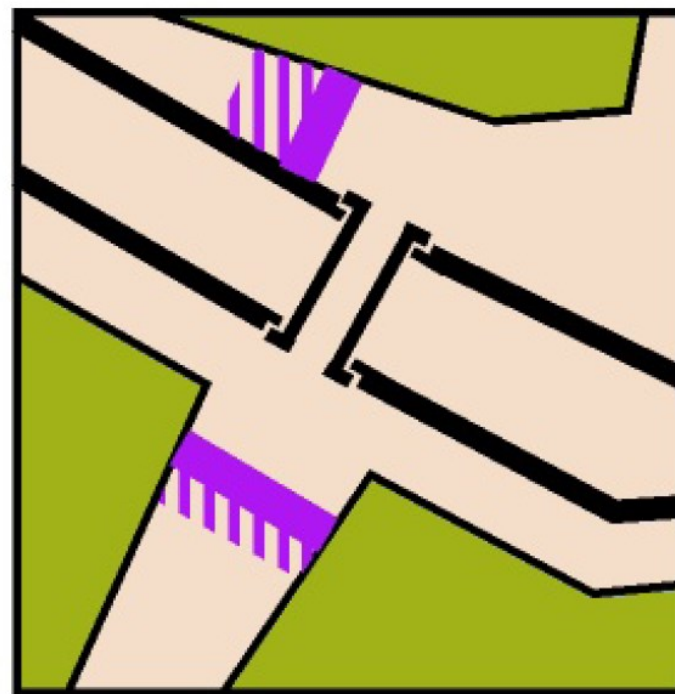
- There are bridges in the terrain. A bridge (512.1) is not defined by ISSOM as an object forbidden to cross, however, athletes must note that no bridges in the terrain can be climbed from the sides.



Artificial barriers



Artificial restrictions are marked on the map with the combination of “Uncrossable boundary” (ISSOM 707) and “Out-of-bounds area” (709). They are very visible both on the map and in the terrain.

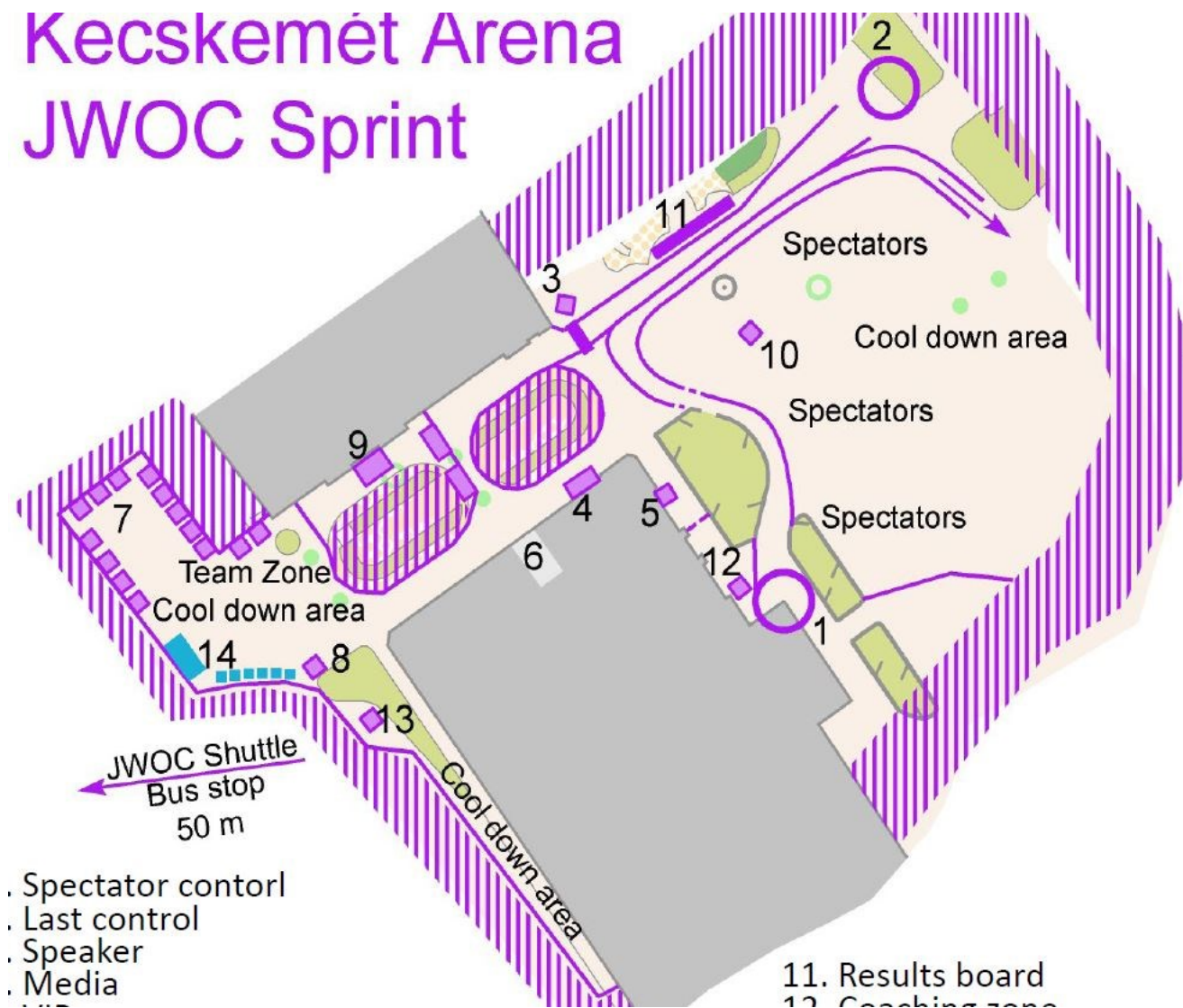


Miscellaneous



- In certain places gates or passages through walls are drawn much wider than in reality to make them easier to spot on the map.
- Both courses cross themselves multiple times. There are several parallel legs. There are controls (on the same course) close to each other. Please pay special attention to visiting the controls in the right sequence!
- Shoes with metal spikes or studs are not allowed. Dobbs without metal spikes are allowed.

Kecskemét Arena JWOC Sprint



- . Spectator control
- . Last control
- . Speaker
- . Media



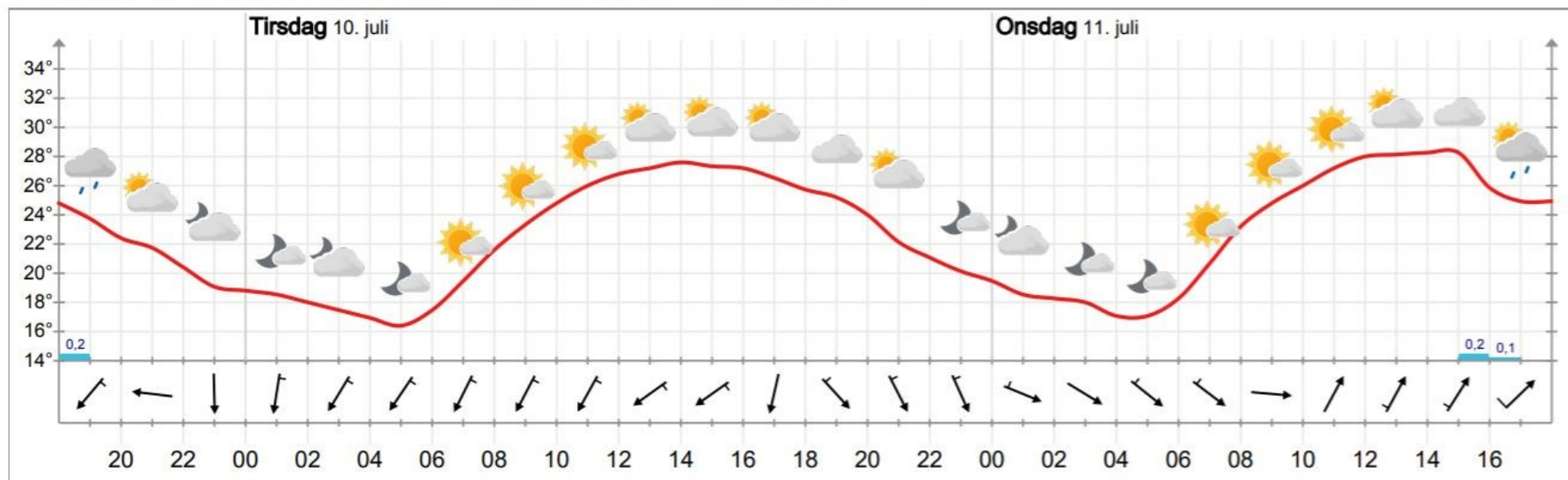
City Hall Reception



- Starts at 18:05
- City Hall (at the spectator control)
- Cold supper will be served with drinks
- Dress code: national team uniform
- Bus back to accommodation: 19:25



Meteogrammet for Kecskemét mandag kl 18 til onsdag kl 18



Langtidsvarsel for Kecskemét

I morgen 10.07.2018	Onsdag 11.07.2018	Torsdag 12.07.2018	Fredag 13.07.2018	Lørdag 14.07.2018	Søndag 15.07.2018	Mandag 16.07.2018	Tirsdag 17.07.2018	Onsdag 18.07.2018
27°	28°	26°	28°	28°	29°	28°	30°	31°

Questions & Answers 1.



- **Question 1: In the model event we found few types of control constructions (wooden and metal). Will it be also mixed in the competition?**
- **Answer 1: Yes, there will be both wooden and metal control stands.**
- **Question 2: In the model event map some of the gates were open (drawn on the map like forbidden to cross/wall). If the gate will be open, any mark in terrain possible?**
- **Answer 2: We feel that there are few enough gates in the terrain, so that we can control them all. Gates which are shown as open on the map will be open, those which are shown as closed on the map will be closed.**

Questions & Answers 2.



- **Question 3: Can there be more toilets in the quarantine?**
- **Answer 3: Tomorrow you will be quarantined in a school. There will be more toilets available than today.**
- **Question 4: How far through the courses will the arena passage be?**
- **Answer 4: It is in the second half of the course.**

Questions & Answers 3.



- **Question 5: Some problems today at accommodation A as breakfast only opened at 06:00. Will lunch be available tomorrow at 11:00 sharp?**
- **Answer 5: Yes.**
- **Question 6: Is the traffic closed between pre-start and the start proper (-3)?**
- **Answer 6: No, you have to obey normal traffic rules. No risk to miss it in the 7 minutes available.**

Questions & Answers 4.



- **Question 7: What kind of shoes are recommended?**
- **Answer 7: Road race shoes as 85% of the terrain is asphalt.**
- **Question 8: Are the forbidden areas taped? Will the tape around the arena be marked on the map?**
- **Answer 8: The taped areas around the spectator area will be shown on the competitor's map. The spectator area (see bulletin) is shown as out-of bounds.**

Questions & Answers 5.



- **Question 9: Are the boundaries of the cool-down area obvious?**
- **Answer 9: They make common sense, but they are not all marked. If you don't go far away from the spectator area, you will be safe.**
- **Question 10: Can there be every choice available for breakfast for the latecomers too?**
- **Answer 10: Yes, we have made the necessary arrangements.**

Questions & Answers 6.



- **Question 11: Can we clarify which GPS watches can be carried?**
- **Answer 11: Organiser will act according to what we discussed yesterday (change from today's approach).**
- **Question 12: Where can we find a start list where I can see who is running with GPS?**
- **Answer 12: The start list on the JWOC website should contain that information.**

Questions & Answers 7.



- **Question 13: Can you publish one start list with those who wear GPS tomorrow in the quarantine?**
- **Answer 13: Yes, we will make sure to do that.**



JUNIOR WORLD ORIENTEERING CHAMPIONSHIPS KECSKEMÉT, HUNGARY 2018

GOOD LUCK!