

CUPA VARIANT 5

30. April - 3. May 2015



TARGOVISHTE TROPHY

Preliminary Bulletin

Thursday

30. April 2015

Night Orienteering
(«Balkan Night»)

City of Targovishte

14.00 to 19.00 o'clock: Handing-out of the documents near the art gallery «Borovo Oko», Targovishte.

18.00 o'clock: Start for classes M10, W10, M12, W12 and open short (daylight competition).

18.00 to 19.00 o'clock: Concert. A thrilling musical revue will be presented for you in «Mladeshki Dom» (Youth House of Targovishte, junction Boulevard Mitropolit Andrey and Christo Botev street). The walking distance from «Mladeshki Dom» to the start/finish-area of the competition is about 15 minutes.

19.30 o'clock: prize-giving for classes M10/W10 (all other classes will be awarded during the prize-giving ceremony in Loznitsa on May 1st, 2105)

20.45 o'clock: First start of the night orienteering (all classes except M10, W10; open short may start till late).

Important additional information

• Competitors, who do not like to take part in the night orienteering may start during daylight in class «open short». BUT PLEASE NOTE: STRICTLY NO DOUBLE STARTS. If you run «open short» during day-

light, you may not start again during nighttime.

• Children in class M12/W12 start after 18.00 o'clock, still during daylight. If competitors of classes M12 and W12 prefer to start in the dark, they may ask for a late start in class «open short».

How to get to the competition site

The competition center (art gallery, Murash street № 21, near lake Borovo Oko) is within walking distance from most city hotels and during the competition there is no official parking nearby. We kindly ask you to leave your car at the hotel! The gallery may be used as changing room. Toilets are available in the building, too. GPS-Coordinates: 43°14'14" North / 26°34'28" East

Map, terrain and vegetation

Scale of the map 1:4'000, contours 2.5 meters. Map size A3 (for classes M/W10, 12 an open short it's A4). Flat terrain with hardly no climb. Partly urban area, partly park like forests with a network of paths and minor tracks. The river in the mapped area must be crossed on bridges only. NEVER EVER go through the river!

IMPORTANT NOTE!

• PLEASE CROSS ROADS VERY CAREFULLY. There will be some traffic on the mapped roads.

Starting procedure

The distance from the assembly area to the start is 100 meters. The com-

petitors have to be in the start area no later than 3 minutes before their starting time. At the start you have to punch the SI-unit on the start line. Late starters must contact the official at the start gate. Late starters will have to start in a separate corridor with NO start station!

Classes M10 and W10

We offer a short course on marked paths for our youngsters. No ranking for M10 and W10, but all finishers will get a small surprise.

Finishing procedure

From the last control the competitors have to follow the marked path to the finish. On the finish line the competitors have to punch one of the two SI-units to get a finish time. After the finish the competitors have to stay in the corridor and follow the instructions for registering the SI-data. The maps have to be left in the finish area. Competitors, who have not finished their course must pass the finish area, too, and hand in their map.

Official opening and prize-giving ceremony

19.30 o'clock: prize-giving for classes M10/W10.

All other classes will be awarded during the prize-giving ceremony in Loznitsa on May 1st, 2105. All competitors ranked 1st, 2nd and 3rd in will get prizes. There is prize money for classes M/W21E: 1st place 200 Leva, 2nd place 100 Leva, 3rd place 50 Leva.

Friday
1. May 2014
SPRINT
(«Balkan Express»)
World Ranking Event
City of Loznitsa

19.00 to 11.15 o'clock: Handing-out of the documents in the finish area of the competition (Loznitsa city center).

12.00 o'clock: First starts of the sprint competition in the city of Loznitsa.

13.30 o'clock: Start of elite classes M21E and W21E.

14.30 o'clock: Prize-giving ceremony in Loznitsa city center (including prize-giving ceremony for the night orienteering event of April 30th).

19.00 o'clock: «Orienteers Evening» in restaurant «Mizia» in Targovishte. Banquet, DJ, live music.

PLEASE NOTE: We urgently ask you to order your vouchers before arrival! Vouchers can be ordered until April 28th, 2015, 6 p.m.

How to get to the competitor site

Follow road Nr. 49 from Targovishte in direction Razgrad. At the roundabout after 10 km turn right in direction Loznitsa. Follow road Nr. 51. **DO NOT ENTER LOZNITSA!** Just stay on road Nr. 51 until you see the sports stadium and an orienteering sign on your right hand side. Turn right and follow strictly the parking instructions of our staff (no car is allowed to park or to pass the mapped area of the city). Allow a driving time of 30 minutes.

GPS coordinates: 43°22'33" North / 26°36'10" East

Quarantine

After 11.45 o'clock, the competitors must stay within the quarantine zone. Quarantine zone includes the whole area of the school «Vasil Levski» in

the very center of the city of Loznitsa and as well the arena near the finish and all official parking areas (east of the school «Vasil Levski»).

Terrain and vegetation

Scale of the map: 1:4000. Contours 2 meters. Map size A3. Urban area, park like areas, residential quarters. A part of the map covers a very flat deciduous forest of very good runnability.

Starting procedure

The distance from the quarantine and warm up zone (school «Vasil Levski») to the start is 50 meters. The competitors have to be in the start area no later than 3 minutes before their starting time. At the start you have to punch the SI-unit on the start line. Late starters must contact the official at the start gate. Late starters will have to start in a separate corridor with NO start station!

Finishing procedure

On the finish line the competitors have to punch one of the two SI-units to get a finish time. After the finish the competitors have to stay in the corridor and follow the instructions for registering the SI-data. The maps have to be left in the finish area. Competitors not finishing their course must pass the finish area, too.

Classes M10 and W10

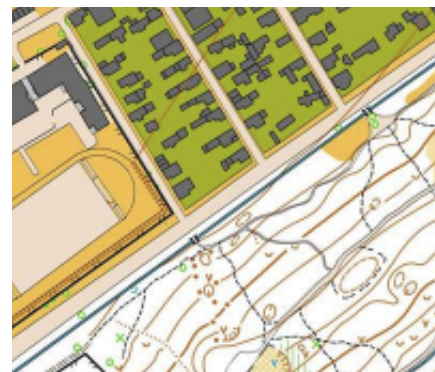
We offer a short course on marked paths for our youngsters. No ranking for M10 and W10, but all finishers will get a small surprise.

Prize-giving ceremony

All competitors ranked 1st, 2nd and 3rd in will be honoured. In elite classes M21E and W21E runners ranked 1st, 2nd, 3rd, 4th, 5th and 6th will be honoured. There is prize money for elite classes: 1st place 200 Leva, 2nd place 100 Leva, 3rd place 70 Leva, 4th place 50 Leva, 5th place 40 Leva, 6th place 30 Leva.

Sponsor of the day

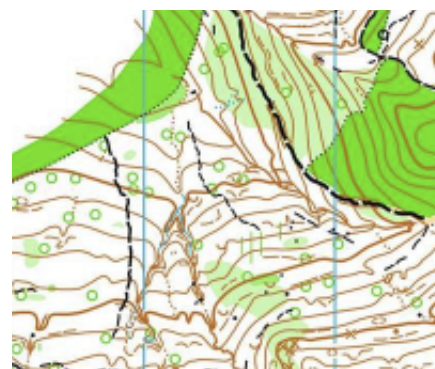
Lions Club, Baden-Heitersberg (Switzerland)



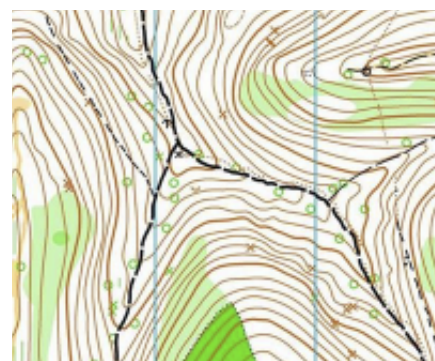
NIGHT / НОЩНО



SPRINT / СПРИНТ



MIDDLE / СРЕДНА



LONG / ДЪЛГА

Saturday 2. May 2015 Middle-distance Race «Balkan hills» village of Dralfa

09.00 to 10.15 o'clock: Handing-out of the documents in the competition center near the village of Dralfa.

11.00 o'clock: First starts of the middle-distance competition. Map «Dralfa» (2015).

19.00 o'clock: Prize-giving ceremony in front of the art gallery in Targovishte («Borovo Oko», Murash street № 21, Targovishte). In case of bad weather the ceremony will take place in the gallery.

19.30 o'clock: Musical greetings of the city of Targovishte and concert of the Bulgarian rock band BTR

How to get to the competition site

From OMV petrol station Targovishte follow the road in direction Popovo (roads № 74 and № 51). In the village of Dralfa (Дралфа) look out on your left hand side for the signpost pointing in direction Rosina (Розина). Follow the road to Rosina for 1 km and park then as instructed by our staff. Allow a driving time of 25 minutes.

GPS coordinates: 43°19'17" North / 26°25'08" East

Map, terrain and vegetation

Scale of the map 1:10'000, contours 5 meters. Map size A4. Moderately hilly and in some parts steep forest area. Many ditches, trenches and fox-holes. In most parts deciduous forest (beech, oak), very good runnability. Well developed network of tracks and trails. Due to spring time vegetation some of them are not well visible. No creeks or rivers. In places, there are shoots of young trees that reduce runnability.

Starting procedure

The distance from competition center to the start is 400 meters. The com-

petitors have to be in the start area no later than 3 minutes before their starting time. At the start you have to punch the SI-unit on the start line. Late starters must contact the official at the start gate. Late starters will have to start in a separate corridor WITHOUT a start station!

Finishing procedure

From the last control the competitors have to follow the marked path to the finish. On the finish line the competitors have to punch one of the two SI-units to get a finish time. After the finish the competitors have to stay in the corridor and follow the instructions for registering the SI-data. The maps have to be left in the finish area. No maps will be handed out until the last competitor has started. Competitors not finishing their course must pass the finish area, too.

Prize-giving ceremony

All competitors ranked 1st, 2nd and 3rd will be awarded. There is prize money for classes M/W21E: 1st place 150 Leva, 2nd place 80 Leva, 3rd place 50 Leva. No prize-giving for open classes.

Classes M10 and W10

We organize an orienteering game for kids near the assembly area. No ranking for M10 and W10, but all finishers will get a small surprise. Kids may take part starting from 11.30 o'clock until 13.00 o'clock.

Sponsor of the day

Siven



Sunday 3. May 2015 Long-distance Race «Targovishte Trophy» World Ranking Event Village of Saraewo

08.00 to 09.30 o'clock: Handing-out of the documents in the finish area of the competition.

09.20 o'clock: Technical conference and election of the jury for the World Ranking Event

10.00 o'clock: First starts of the long-distance competition (World Ranking Event).

14.00 o'clock: prize-giving ceremony. Closing ceremony of the competition.

How to get to the competition site

From OMV petrol station Targovishte follow the to Popovo (roads № 74 and № 51). Turn right, entering Popovo. Drive in direction Ruse (Pyce) and watch out for road signs pointing to Zaraewo (Зараево). Follow the road Nr. 2002 all the way to the village of Zaraewo. In Zaraewo look out on your left hand side for sign pointing in direction of the competition. Follow the steep and rocky street for 2 km. Then park as instructed by our staff. Allow a driving time of 50 minutes.

GPS coordinates: 43°25'60" North / 26°15'13" East

Map, terrain and vegetation

Scale of the map 1:15'000 for classes M21E, M35, W21E. For all other classes 1:10'000. Contours 5 meters. Hilly forest region with distinctive terrain forms, in some parts steep. With numerous stones and large boulders. To tape your ankles is recommendable. In most parts deciduous forest (beech, oak) with very good runnability. Well developed network of tracks and trails. Areas with fallen trees are mapped with green raster lines, indicating reduced runnability. Areas with many fallen trees are mapped dark green (impenetrable area).

Start procedure

The distance from the assembly area to the start is 400 meters with 20 meters climb. The competitors have to be in the start area no later than 3 minutes before their starting time. At the start you have to punch the SI-unit on the start line. Late starters must contact the official at the gate. Late starters will have to start in a separate corridor with NO start station!

Finishing Procedure

On the finish line the competitors have to punch one of the two SI-units to get a finishing time. After the finish the competitors must stay in the corridor and follow the instructions for registering the SI-data. The maps have to be left in the finishing area. No maps will be handed out until the last competitor has started. Competitors not finishing their course must pass the finish area, too.

Classes M21E and W21E

For runners in classes M21E and W21E water will be available after two thirds of the course. Competitors of classes M21E and W21E are not allowed to start with GPS watches with display. Competitors in M21E need SPORTident-badges series 9 or newer.

Classes M10 and W10

We offer a short course on marked paths for our youngsters. No ranking for M10 and W10, but all finish-

ers will get a small surprise. Kids may take part starting from 10.30 o'clock until 12.00 o'clock.

Ranking and prize-giving ceremony

Competitors ranked 1st, 2nd and 3rd will be honoured. In elite classes M21E and W21E runners ranked 1st, 2nd, 3rd, 4th, 5th and 6th will be honoured. There is prize money for the elite classes: 1st place 1000 Leva, 2nd place 400 Leva, 3rd place 200 Leva, 4th place 150 Leva, 5th place 100 Leva, 6th place 50 Leva.

Sponsor of the day

ALLIANZ

SIVEN
active sport



EnerSys

General informations

SPORTident

Competitors without their own SI-badge may rent a badge for 2 Levs (1 Euro) per day. For lost badges we have to charge 22 Euro – respectively 42.50 Euro for rented badges of the newer generation.

Staff

Our staff will wear well visible orange badges with the inscription «Staff» or «Съдия», orange hats and orange T-shirts. Please follow the instructions of our staff.

Parking

Cars may be parked in the marked parking spaces only. Please follow the instructions of our staff and the police.

O-Shop

A limited range of orienteering products will be on sale in the finish area

Food and beverage

Every day in the finish area food and drinks will be on sale. Watch out for the yellow sales stall of Dimitar Dragomirov.

Internationality

By April 22th 2015 we have registered competitors from Albania, Bulgaria, Estonia, Hongkong, Hungary, Macedonia, Moldova, Romania, Serbia, Switzerland and Russia.

Weather forecast

There is no bad weather for orienteers. Therefore there is actually no need to check the weather forecast on www.sinoptik.bg (search there for Targovishte, BG).

Allianz

КУПА ВАРИАНТ 5 ТЪРГОВИЩЕ ТРОФЕЙ

Данни за маршрутите



VARIANT 5 CUP TARGOVISHTE TROPHY

course lengths

CLASS	НОЩНО / NIGHT 30.04.2015		СПРИНТ / SPRINT 01.05.2015		СРЕДНА / MIDDLE DISTANCE 02.05.2015			ДЪЛГА / LONG DISTANCE 03.05.2014			ГРУПА
	дължина length	КТ controls	дължина length	КТ controls	дължина length	сборно climb	КТ controls	дължина length	сборно climb	КТ controls	
M10	—	—	—	—	—	—	—	—	—	—	M10
M12	1.7 км	10	2.2 км	10	2.4 км	65 м	13	2.9 км	90 м	11	M12
M14	2.2 км	14	2.6 км	11	3.4 км	100 м	14	3.2 км	140 м	16	M14
M16	4.0 км	20	3.4 км	16	4.7 км	160 м	14	6.6 км	390 м	20	M16
M18	4.5 км	23	3.7 км	17	5.3 км	175 м	16	8.9 км	480 м	22	M18
M20	4.5 км	23	3.7 км	17	5.3 км	175 м	16	8.9 км	480 м	22	M20
M21B	4.2 км	25	3.3 км	13	5.0 км	165 м	16	5.5 км	300 м	14	M21B
M21E	5.7 км	29	3.7 км	17	6.3 км	180 м	19	11.0 км	680 м	31	M21E
M35	4.9 км	26	3.4 км	16	5.8 км	165 м	16	8.4 км	560 м	22	M35
M40	4.2 км	25	3.3 км	13	5.0 км	165 м	13	6.6 км	390 м	20	M40
M45	3.7 км	19	3.3 км	14	4.5 км	155 м	15	5.5 км	300 м	14	M45
M50	3.7 км	19	3.3 км	14	4.5 км	155 м	15	5.3 км	280 м	16	M50
M55	3.4 км	17	2.7 км	12	4.1 км	155 м	15	5.2 км	300 м	14	M55
M60	3.4 км	17	2.7 км	12	4.1 км	155 м	15	4.6 км	270 м	15	M60
M65	2.5 км	17	2.3 км	11	3.3 км	120 м	14	4.3 км	180 м	16	M65
M70	2.5 км	17	2.3 км	11	3.3 км	120 м	14	3.2 км	150 м	15	M70
M75	2.0 км	13	2.3 км	11	3.2 км	85 м	14	3.2 км	150 м	15	M75
W10	—	—	—	—	—	—	—	—	—	—	Ж10
W12	1.4 км	11	2.1 км	9	2.0 км	50 м	11	2.8 км	80 м	10	Ж12
W14	1.6 км	12	2.2 км	10	2.4 км	65 м	13	3.1 км	120 м	14	Ж14
W16	3.9 км	22	3.0 км	13	4.1 км	165 м	14	4.5 км	220 м	14	Ж16
W18	4.1 км	22	3.1 км	14	4.7 км	155 м	14	6.0 км	360 м	16	Ж18
W20	4.1 км	22	3.1 км	14	4.7 км	155 м	14	6.0 км	360 м	16	Ж20
W21B	3.6 км	17	2.9 км	12	4.6 км	155 м	13	5.1 км	270 м	18	Ж21B
W21E	4.9 км	26	3.1 км	14	5.8 км	165 м	16	8.4 км	560 м	22	Ж21E
W35	3.9 км	22	3.0 км	13	5.0 км	170 м	15	6.0 км	360 м	16	Ж35
W40	3.6 км	17	2.9 км	12	4.6 км	155 м	13	5.4 км	290 м	16	Ж40
W45	3.3 км	20	2.5 км	10	4.3 км	155 м	14	5.4 км	290 м	16	Ж45
W50	3.3 км	20	2.5 км	10	4.3 км	155 м	14	5.2 км	300 м	14	Ж50
W55	2.8 км	17	2.4 км	10	3.6 км	125 м	14	4.6 км	270 м	15	Ж55
W60	2.8 км	17	2.4 км	10	3.6 км	125 м	14	4.3 км	180 м	16	Ж60
W65	2.0 км	13	2.4 км	10	3.2 км	85 м	14	3,2 км	150 м	15	Ж65
Open short	1.4 км	11	2.1 км	9	2.0 км	50 м	11	2.8 км	80 м	10	Открит - къс
Open middle	2.2 км	14	2.6 км	11	4.1 км	165 м	14	5.1 км	270 м	18	Открит - среден
Open long	4.0 км	20	3.4 км	16	5.0 км	170 м	15	6.6 км	390 м	20	Открит - дълъг



<https://www.facebook.com/variant5cup>