

The Lithuanian Trail orienteering championships will be held at the same time. Only members of Lithuanian orienteering and Lithuanian disabled persons sport federation will be ranked for Lithuanian championships results at TempO and PreO courses in the same manner as described above. First 3 competitors in Open and Paralympic classes in total PreO and TempO courses will be awarded by Lithuanian championships medals and diplomas.

Registration and start fee

Register here: <http://www.orienteeringonline.net/CompetitionBasicInfo.aspx?CompetitionID=3745>

In some cases You are allowed to register by mail: oskfalco@gmail.com

Please indicate Your name, country, club, class, courses, SI number (if available), IOF ID (if available).

It is possible to get IOF license number by creating user account at IOF Eventor page. It doesn't cost anything, you only have to enter your information to the system. Please contact us if you need assistance.

Late registration will be possible at event center. It will be one deadline for registration to make start cost cheaper: **up till 26 July 2018.**

Course price (EUR)	up till July 26		after July 25	
	adult	junior	adult	junior
PreO 1	10	5	15	10
PreO 2	10	5	15	10
PreO 3 (WRE)	15	10	20	15
TempO 1	5	2,5	7,5	5
TempO 2	5	2,5	7,5	5
sum:	45	25	65	45
All courses	40	20	50	30

The price depends on REGISTRATION DATE, not payment date. So please, register early to have starts cheaper.

Payment will be acceptable in cash at competition event center or by bank transfer (to be received up till 1st of August).

Start lists

Preliminary start list of first day will be published a week before competitions.

Adjusted final start list of each day will be published a day before competition day. Competitors that will be late at their start point or with late registration will have the opportunity to start after published start list ends at free order.

Please contact us directly for start list corrections (early or late start times).

Assistants

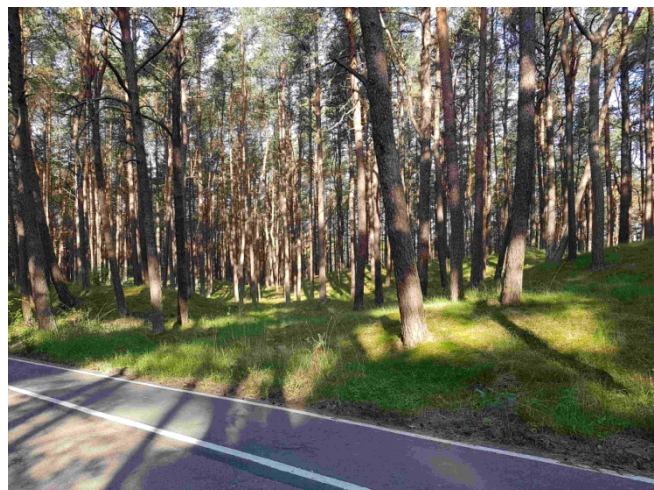
There will be no need of essential assistants at each course. Paths are of very good quality and the elevation will be minor. We expect to have some assistants at a bit difficult course places (steep downhill and narrow places). We will be grateful for your early information on assistant needs. Competitor's own assistants are permitted.

Terrain and maps

The terrain is quite similar to WTOC2018 (Latvia, Daugavpils) terrain. It will be good possibility to have good practice before WTOC starts !

No TrailO competitions held before at this terrain.

All courses at mature pine forest with good visibility and many contour objects. Most trails with firm surface.





All maps: ISSOM 2007, 1:4000, contour interval 2,0m, size A4, waterproof, mapped at April-May 2018 by Andrius Jovaiša. Laser scan contours (0.5m) are used in mapping process and will be visible at solution maps.

Only features with height more than 1 meter are mapped. In some cases clearly visible landforms with less than 1 meter can be mapped.

Black cross (ISSOM 540) in most cases represent information posts and boards.

Benches are mapped with special symbol: gray rectangle with real orientation (you can see them at map samples above).

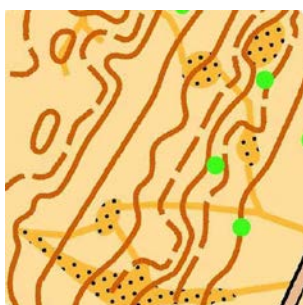
In some places (green on yellow) there are no dots representing distinct vegetation boundary (ISSOM 416) for better map reading.

Some special mapping:

2nd day TempO 3rd station:



Sandy tracks near beach is Mapped as yellow lines.



Punching

Electronic punching using SI (SPORTident) units. Competitors can use their own SI cards. It will be available to rent SI card at start place (2€ one course or 5€ the whole event).

Courses

Course parameters and distances:

	controls	Timed stations (controls)	distance (km)	elevation (m)	time limit OPEN (min)	time limit PARA (min)	ferry to EC (m)	EC to start (m)	finish to EC (m)
PreO day 1	21	1(2)	1,0	5	93	93	1040	120	370
PreO day 2	24	1(2)	1,3	12	111	111	160	510	300
PreO day 3 (WRE)	28	1(3)	2,0	18	144	144	160	110	540

There will be short one way section at day 2 PreO course due steep downhill.

	stations	controls at station	distance (km)	elevation (m)	PreO finish to 1st station (m)	last station to EC (m)
TempO day 1	3	5	0,1	0	90	370
TempO day 2	3	5	0,1	0	150	300

In most cases decisions should be made by map reading.

Mapper and course setter: Andrius Jovaiša

Event adviser: Mykola Opanasenko (UKR)

A jury of 3 persons from different countries will be appointed to rule on complaints and protests. The time limit for complaints is 15 minutes after the final results have been published. Any protest shall be made in writing to a member of the jury no later than 15 minutes after the organizer has informed the complainant of the decision about the complaint. A protest fee of 30 EUR shall be paid in cash when making a protest. The fee will be returned if the protest is accepted by the jury.

Zero tolerance

The same Zero tolerance levels will be used both in PreO and TempO courses.

Zero answer is possible if the flag is set at least 5 meters away from the correct position. When setting out flags and determining the correct point we will use 6 meters distance to avoid uncertainty.

No Zero answers for 'between' descriptions using the wrong line, distance, or deviation and the 5 meters rule is valid.

No Zero answers for a flags on a point feature using wrong angle.

Arrival

There are 2 ferries to Smiltynė from Klaipėda. One is for persons with no cars and another is for cars. There you can find all needed information on ferries:

<https://www.keltas.lt/en/home/>

The price for both way ferry is 1,00 €/person

The price for both way ferry is 0,50 €/disabled person (proving document is needed)

The price for both way ferry is 12,50 €/car

In the right is the map of parking areas:

blue areas: 0,15 €/hour,

yellow areas: 0,60 €/hour,

red areas (including Smiltynė): 0,90 €/hour.

Event centers will be in close distance from ferry.

We recommend to park your cars at blue area close to ferry and use it with no car.



For those who use bicycles: there are bicycle rent

points near ferry. There is very beautiful bicycle

track to Nida (55km one way) for those who like to ride.

You can find more information here on bicycle rent and other issues:

<https://www.klaipedainfo.lt/en/bicycle-rent/>

Accommodation

There are many available hotels and other kind of accommodation in Klaipėda, but only few with the possibility to accommodate guests with disability.

Please feel free to contact us for any accommodation question and we will find the best solution for you.

Event organizer:

OSK "Falco"

Melynių str. 8, LT-53433, Vilemu k., Kauno raj., LITHUANIA; e-mail: oskfalco@gmail.com

Account : LT797044060007814548 Bank: AB SEB bankas, SWIFT: CBVILT2X; BIC: 70440

Person in charge: Andrius Jovaiša

Phone: +370 68788771, andrius.jovaisa@gmail.com