



NOKIAN TYRES
WORLD ORIENTEERING
CHAMPIONSHIPS
LATVIA | 2018
RIGA | SIGULDA

3 - 11 AUGUST

Latvia 100 



BULLETIN 3



TABLE OF CONTENTS

1.	WELCOME	3
2.	ORGANISATION	4
3.	CONTACT ADDRESS	4
4.	VENUE AND ACCESS	6
5.	PROGRAMME & LOCATION	7
6.	EVENT CENTRE	8
7.	ACCOMODATION	9
8.	FOOD	9
9.	TRANSPORT	9
10.	EMARGOED AREAS	11
11.	TRAINING POSSIBILITIES	13
12.	CLASSES AND ENTRY REGULATIONS	13
13.	COMPETITION RULES	13
14.	ENTRIES	14
15.	REGISTRATION AND ACCREDITATION FOR VIP AND IOF OFFICIALS	17
16.	CLOTHING	17
17.	ANTI DOPING	17
18.	CLIMATE AND HAZARDS	17
19.	VISAS	19
20.	LIVE PRODUCTION / TV / LIVE RESULTS	19
21.	MEDIA	19
22.	IOF / MEDIA RACE	20
23.	PUNCHING SYSTEM / GPS	20
24.	MODEL EVENTS	20
25.	SPECTATOR EVENTS	20
26.	COMPETITIONS TECHNICAL	21



DEAR LOVERS OF ORIENTEERING!

Riga is ready for the world's most prestigious orienteering event.

It will be both a great honour and a challenge to host the participants of the World Orienteering Championships, but I can prom-

ise: lovers of this sport will have a wonderful experience.

In addition to enjoying the sports events, participants and fans will have an opportunity to experience a wide range of cultural events and entertainment made available to the citizens and visitors of Riga on a daily basis: the unique

Art Nouveau architecture, the beautiful parks, hospitable pubs and much more. I wish endurance and stamina to the athletes and pleasant emotions to the fans.

Welcome to Riga!

Nils Ušakovs
Chairman of Riga City
Council



WORLD ORIENTEERING CHAMPIONSHIPS 2018 - IN THE CAPITAL OF LATVIA!

Latvia will be hosting the 35th World Orienteering

Championships in the year when it is celebrating its centenary. Sprint races will take place in Riga, the capital of Latvia, while the forest races will be held in Sigulda, which is often referred to as "the Latvian Switzerland". In addition to WOC2018, Latvia will host

the 25th European Foresters' Orienteering Championships (EFOL), while the spectators and orienteering fans will have a chance to run in the same terrains as the athletes competing in the world championships.



2. ORGANISATION

Event Director:	Jānis Lazdāns	janis.lazdans@woc2018.lv
Event Secretary:	Inese Purgaile	info@woc2018.lv
Finances:	Ģirts Mamis	lof@lof.lv
IT Manager:	Kārlis Osis	lvkaos@inbox.lv
Training:	Ritvars Karpikovs	trainings@woc2018.lv
Media and communication:	Juris Vaidakovs	media@woc2018.lv
Arena manager:	Gunārs Ikaunieks	gunars21@inbox.lv
TV-production:	Karel Jonák	karel.jonak@empro.tv
VIP manager:	Rota Brūna	rota.bruna@fizmati.lv
Transport:	Māris Heinols	maris.heinols@gmail.com
Sales:	Jānis Bukins	janis.bukins@inbox.lv
Sponsors:	Andis Laveiķis	
Accommodation:	Ildze Straume	accommodation@woc2018.lv
Map team:	Indulis Peilāns (Manager), Ainars Lagzdiņš (Sprint), Atis Zariņš (Sprint), Mikus Puriņš (Sprint Relay), Māris Strautnieks (Middle), Dagnis Dubrovskis (Long, Relay), Leonīds Malankovs (Long, Relay)	
Course team:	Indulis Peilāns (Manager, Long, Relay), Jānis Tamužs (Sprint), Mikus Puriņš (Sprint relay), Aigars Leiboms (middle)	

EVENT CONTROLLERS

IOF Senior Event Adviser:	Daniel Leibundgut (SUI)
IOF Assistant Event Adviser:	Urs Hofer (SUI)
IOF IT Assistant Event Adviser:	Finn Arildsen (DEN)
IOF TV/Arena Assistant Event Adviser:	Daniel Leibundgut (SUI)
National Controller:	Guntars Mankus (LAT)

3. CONTACT ADDRESS

LATVIAN ORIENTEERING FEDERATION

Grostonas iela 6b, Rīga, LV-1013, Latvia

Ģirts Mamis, tel: +371 26470447, email: lof@lof.lv

WOC Secretary: Inese Purgaile, tel: +371 29751855, email: info@woc2018.lv

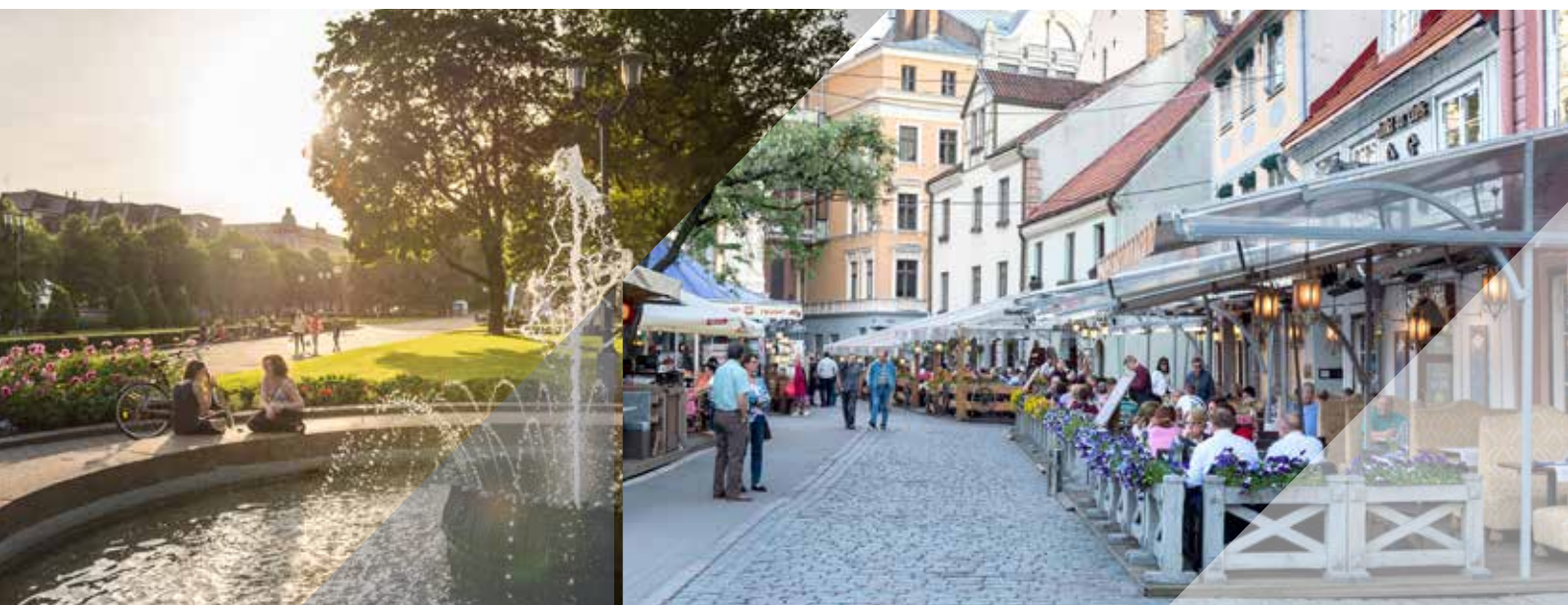


LIVE
RĪGA



Everything you need to know about Riga
www.LiveRiga.com

4. VENUE AND ACCESS



The opening ceremony and sprint races will be held in Riga, the capital of Latvia.

The Riga International Airport (RIX) is the largest airport in Latvia and in the Baltic countries. It is situated 13 km south-west from Riga. The city can be reached by a bus or a taxi. Several car rental companies have their offices in the airport.

Forest races will take place in Sigulda, “the Latvian Switzerland”.

Sigulda is 53 km away from Riga and is among the most popular tourist destinations in Latvia. From Riga, Sigulda can be reached by train, bus or car (A2 motorway).



5. PROGRAMME & LOCATION

* Provisional, may be changed due to TV requirements

Date	Time	Event / Race	Location
02.08.	10:00	Arrival teams	Sigulda
	12:00	Deadline for late entries and changes	IOF Eventor
	10:00-20:00	Event Centre open	Sigulda
03.08.	10:00-20:00	Event Centre open	Sigulda
	10:00-14:00	Model Event for all sprints	Rīga
	12:00	Deadline of entries for Sprint	IOF Eventor
	13:00-15:00	Technical Model Event for all races	Rīga
	15:00	Begin of full embargo for Sprint Area	Rīga
	17:00	Team officials meeting Sprint/Sprint Relay	Hotel Sigulda
	04.08.	08:00-12:00	Event Office open
9:00-11:30		Sprint Qualification	Arena Rīga, Kronvalda park
14:00-19:00		Event Office open	Arena Rīga Old Town
15:00-17:00*		Sprint Final	Arena Rīga Old Town
17:00		Begin of full embargo for Sprint Relay Area	Rīga
17:30-18:30		Opening ceremony/Price giving ceremony Sprint Distance	Arena Rīga Old Town
19:00		Deadline of entries for Sprint Relay	IOF Eventor
05.08.		15:00-18:00	Event Office open
	17:00-18:10	Sprint Relay	Arena Āgenskalns
	18:30	Price giving ceremony Sprint Relay	Arena Āgenskalns
06.08.	10:00-14:00	Model Event for Middle Distance	Tālēni
	11:00-19:00	Event Office open	Sigulda
	12:00	Deadline of entries for Middle Distance	IOF Eventor
	17:00	Team officials meeting Middle Distance	Hotel Sigulda
07.08.	9:00-11:00	Event Office open	Sigulda
	12:00-17:30	Middle Distance	Arena Sigulda
	12:00-18:00	Event Office open	Arena Sigulda
08.08.	10:00-14:00	Model Event for Relay and Long Distance	Ratnieki
	11:00-19:00	Event Office open	Sigulda
	12:00	Deadline of entries for Relay	IOF Eventor
	17:00	Team officials meeting Relay	Hotel Sigulda
	19:00	Price giving ceremony Middle Distance	Sigulda, Railway station Square
09.08.	9:00-12:00	Event Office open	Sigulda
	13:00-18:00	Event Office open	Arena Turaida
	14:00-18:00	Relay	Arena Turaida
10.08.	11:00-19:00	Event Office open	Sigulda
	12:00	Deadline of entries for Long Distance	IOF Eventor
	17:00	Team officials meeting Long Distance	Hotel Sigulda
	19:00	Price giving ceremony Relay	Sigulda, Railway station Square
11.08.	9:00-11:00	Event Office open	Sigulda
	12:00-19:00	Event Office open	Arena Turaida
	12:00-18:00	Long Distance	Arena Turaida
	18:10-18:50	Price giving ceremony Long Distance and closing ceremony	Arena Turaida
	from 20:00	Banquet for athletes and team leaders	Sigulda
12.08.	9:00	Teams departure	Sigulda
	9:00-12:00	Event Office open	Sigulda

6. EVENT CENTRE

The Event Centre and Event Office is located in the temporary premises of the Culture Centre of Sigulda, 3 Raiņa iela, Sigulda. Location 57°09'18.0"N 24°51'13.9"E.

Phone +371 29751855, e-mail: info@woc2018.lv.

The Event Centre will provide the following facilities: Event Office, toilets, media centre, public area with WiFi access, parking.

The prize-giving ceremony will be held in the square near the railway station (350 m from the event centre).

EVENT OFFICE OPENING HOURS:

Day	Event Centre Sigulda	Event Office Arenas
Thur, 2 August	10:00-20:00	-
Fri, 3 August	10:00-20:00	-
Sat, 4 August Sprint Q&F	-	8:00-12:00 Riga, Kronvalda park; 14:00-19:00 Riga Old Town
Sun, 5 August Sprint Relay	-	15:00-18:00 Riga, Āgenskalns
Mon, 6 August	11:00-19:00	-
Tue, 7 August Middle	9:00-11:00	12:00-18:00 Sigulda
Wed, 8 August	11:00-19:00	-
Thur, 9 August Relay	9:00-12:00	13:00-18:00 Turaida
Fri, 10 August	11:00-19:00	-
Sat, 11 August Long	9:00-11:00	12:00-19:00 Turaida
Sun, 12 August	9:00-12:00	-

Please note that the hours are preliminary and may be adjusted.



7. ACCOMMODATION

To inquire about accommodation options still available to teams, media and officials, please contact: accommodation@woc2018.lv

8. FOOD

No special catering will be provided in the sprint and sprint relay arenas. During forest events catering points will be set up in the arenas. The teams may pre-order lunches at their own specified time. Please write to: info@woc2018.lv if you are interested in pre-ordering lunches. The menu offered by the cafeterias in arenas will be published in Bulletin 4.

9. TRANSPORT

Suggested means of transport is own or rental cars and minibuses from Riga International Airport (RIX) to the competition areas. WOC 2018 Official Rental Car Partner is

 **AlphaRent** www.alpharent.lv. Please quote „WOC2018 team” in the Notes section and you will get a special price.

There is an excellent train connection from Riga city centre to Sigulda. The train running schedule is here: www.pv.lv/en/

As to other means of public transport, see: www.1188.lv/en/transport/buses

Compulsory transport

Compulsory transport is offered from quarantine to pre-start areas for the Sprint Qualification, Long Distance and Middle Distance for all competitors and team officials. As well as from quarantine and pre-start back to the finish arena for team officials.

Parking facilities for teams, officials, spectators

In the Sprint and Sprint Relay events team parking close to the quarantine zone. Others parking is available on public parking spots in Riga. Riga parking must happen strictly outside of the embargoed areas. Information about public parking in Riga:

www.rigassatiksm.lv/en/services/parking-services/parking-services/

The organisers will provide special parking lots for teams, media, VIP and spectators during the forest events.





S!GULDA THRILLS



Whether it would be mankind's age-old dream of flying or devotion to the hunt of adrenaline, Sigulda has made every effort to provide exhilarating activities for every traveller. Are you ready for it?

www.tourism.sigulda.lv

10. EMBARGOED AREAS

With regard to the IOF Competition Rules (article 26.5), the embargoed areas are forbidden for all potential WOC2018 athletes, team officials and other persons that may be in a position to give information to the team members.

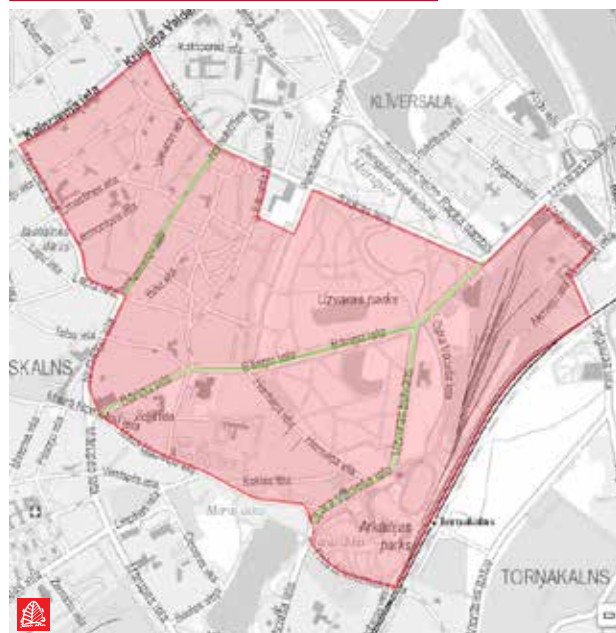
IMPORTANT - FULL EMBARGOED AREAS!

- Starting 3 August 15:00 until end of the Sprint Final competition a full embargo to the Sprint embargoed area applies. Previously open roads shall no longer be used. Also any other means of access to the area (e.g. public transport like bus, tram, train, taxi etc.) is forbidden.
- Starting 4 August 17:00 until end of the Sprint Relay competition a full embargo to the Sprint Relay embargoed area applies. Previously open roads shall no longer be used. Also any other means of access to the area (e.g. public transport like bus, tram, train, taxi etc.) is forbidden.
- The Relay terrain remains fully embargoed until the end of the Long Distance competition.

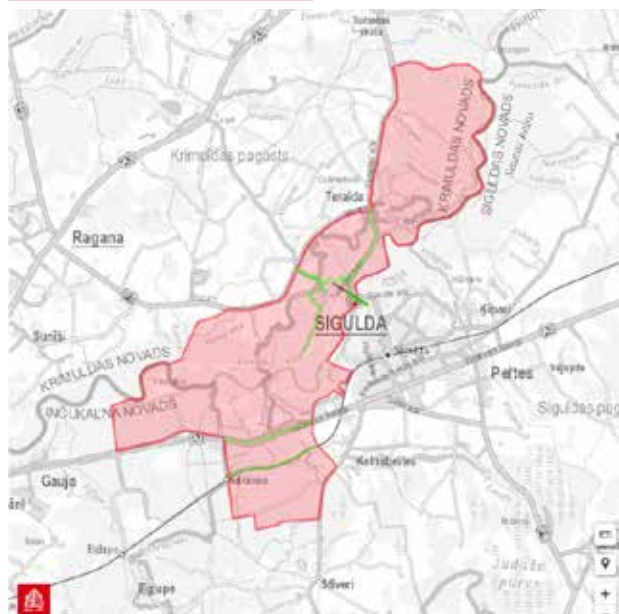
SPRINT - VECRĪGA





SPRINT RELAY - ĀGENSKALNS



MIDDLE, RELAY, LONG



 **EMBARGOED AREA** - Competitors, team officials, and other persons, who, through knowledge of the terrain may influence the results of the competition, are not allowed to enter an embargoed area.

 - It is allowed to cross the forbidden area using this road.

More information and maps of the embargoed areas are available on the WOC2018 website:

<http://www.woc2018.lv/embargoed-areas>



Specially protected cultural monument **Turaida Museum Reserve**



Contacts:

Address: Turaida Museum Reserve
10 Turaida Street, Sigulda, Sigulda Region, LV-2150

E-mail: turaida.muzejs@apollo.lv

Phone: Visitor Centre +371 67972376; Mob. +371 29384512

Instagram: https://www.instagram.com/turaidas_muzejrezervats

GPS: 57.183250, 24.849485

www.turaida-muzejs.lv

11. TRAINING POSSIBILITIES

Free training possibilities within the boundaries of the Gauja National Park are subject to specific rules. All trainings of a foreign national team and individual athletes should be co-ordinated with the organisers of the event.

We recommend purchasing training maps from the WOC2018 organisers. Only the maps provided by the organisers will have accurate information about the accessible and embargoed areas. In case of doubt, please do not hesitate to mail your questions to the below e-mail address.

COSTS OF TRAININGS:

Maps printed on paper (laser print)	5 EUR/map
Maps as PDF-files	80 EUR/file
Maps as OCAD-files	150 EUR/file
Team training with flags in the forest (by arrangement)	80 EUR + 3 EUR/map
Team training with SPORTident in the forest (by arrangement)	120 EUR + 3 EUR/map

Training possibilities are available upon request. For more information, please contact:

trainings@woc2018.lv

Information: <http://www.woc2018.lv/training-opportunities>

WOC SELECTION RACE 6-8 JULY 2018

<https://www.woc2018.lv/WOC2018-selection-races-bulletin-1>

OTHER COMPETITIONS IN LATVIA: <https://lof.lv/os-kalendars>

12. CLASSES AND ENTRY REGULATIONS

- There is one class for women and one class for men. There are no age restrictions (Rule 5.7)
- All competitors represent a Federation (Rule 6.5)
- A competitor may represent only one Federation during any one calendar year (Rule 6.1)
- Competitors who are representing a Federation shall have full passport-holding citizenship of the country of that Federation (Rule 6.2)

All athletes entering IOF World Championships (and World Cup competitions) need a valid IOF Athlete Licence. Read more here: <http://orienteering.org/athletes-licence/>.

The licence is annual and all athletes participating in a Senior World Championship or a World Cup event need to:

1. sign the agreement and send the original to IOF Office. If you are unsure if the original will reach IOF Office before event start date, please email a scanned copy to: iof@orienteering.org. Forms signed previous years are still valid.
2. pay the annual licence fee (30 EURO to be paid in IOF Eventor by Card payment or bank transfer, the Federation can buy a set of licences and assign licence fees to their athletes as well).

Note! Last minute signed forms can be handed over to the Event Office. Please send proof of signing to iof@orienteering.org before handing over to Event Office. Event Office will never handle payments of IOF licence fees, the payments are done in IOF Eventor. If your federation need special arrangements, please contact: david.wastlund@orienteering.org.

WOC 2018 competitions are part of the 2018 Orienteering World Cup. Read more here: https://ranking.orienteering.org/WorldCup/WorldCup?wcup=footo&target=wrs_frame

13. COMPETITION RULES

The 2018 edition of the competition rules for IOF Foot Orienteering events will be applicable to the 2018 World Orienteering Championships.

13. ENTRIES

All Entries and requests for transport packages are only to be made in IOF Eventor. Entries via IOF Eventor. The entry form will be available from 14 May 2018 on

<https://www.eventor.orienteering.org/Events/Show/5120>

The Event start date is 3 August 2018.

Entry deadline for the event is 2 August 2018 at 12:00.

Entries are done by the National team manager. Team manager must make sure that they have the appropriate rights in Eventor to enter the athletes for each competition.

	3 May (-3 months - Start of entry)	3 June (Team Size deadline at -2 months)	22 June (Entries payment deadline at -2 months)	24 July (Team Names deadline at -6 weeks)	2 August (-1 day)	10 August (+1 week)
Team Size Entry Periods	Team Size	+20% (80% refund)	+50% (50% refund)	EVENT		
Team Names Entry Periods		Team Names	+10 EURO			
Payment schedule		Payment			Pay/refund changes	

TEAM SIZE ENTRY

Federation Team Quota <https://eventor.orienteering.org/Documents/Event/1876/1/Federation-Team-Quota-v1.0>

The following information shall be filled via IOF Eventor:

- Team manager (Chosen from list in IOF Eventor)
- Number of Team athletes (Men and Women)
- Number of Team Officials
- Number of Teams for the Relay('s)

The deadline for Team Size Entry is June 3, 2018 (- 2 months).

TEAM NAMES ENTRY

The following information shall be filled via IOF Eventor:

- Name of each Team Athlete by selecting from federation members in IOF Eventor. The deadline for Team Names Entry is 24 July 2018 (- 10 days).

COMPETITION ENTRIES

Names of the competitors and, if required, their starting group, shall be entered in IOF Eventor, before 12 noon on the day before an individual competition.

Names of the competitors and their running order shall be entered in IOF Eventor, before 12 noon on the day before a relay competition. The names of competitors and their running order for Sprint Relay on 5 August shall be entered in IOF Eventor by 19:00 on 4 August.

LATE ENTRIES, CHANGES OF TEAM SIZE OR TEAM NAMES

Late Entries and changes will be accepted, if possible, until 2 August at 12:00. No late entries or changes will be accepted after that date. Late entries and changes will always have a defined extra cost (surcharge). Late entries and changes will always be treated equally and must be communicated directly to the organiser. The organiser makes the changes in IOF Eventor after deadlines.

June 3 to July 24: surcharge 20% on new entries and withdrawals receive an 80% refund.

July 24 to 2 August: surcharge of 50% on new entries, withdrawals receive a 50% refund.

Name changes in this period cost 10 EUR.

PAYMENTS

After the Team Size deadline (-2 months), the organiser will invoice the federation for entries and services. The invoices shall be paid before 22 June 2018 (- 6 weeks). If the Federation have done changes after that date it will be paid/refunded on the event at the Event Office.

Today Eventor does not handle the fees correctly, therefore please wait with the payment until you have received the invoice from the WOC2018 organizer.

BANK INFORMATION

The payment should be transferred to the Latvian Orienteering Federation bank account. IMPORTANT - the payer shall cover all bank charges.

Payment details:

LATVIJAS ORIENTĒŠANĀS FEDERĀCIJA (LATVIAN ORIENTEERING FEDERATION)

Registration No.: 40008021960

IBAN: LV14 RIKO 0002 0131 1137 2

DNB Banka SWIFT: RIKOLV2X

Address: Grostonas iela 6b, Riga, LV-1013, Latvia

Federations can request copies of invoice via email: lof@lof.lv

FEES FOR TEAM MEMBERS

Accreditation fee for athletes	120 EUR
Accreditation fee for team officials	245 EUR
Sprint (Qualification + Final)	120 EUR
Sprint Relay (team)	215 EUR
Long Distance	90 EUR
Middle Distance	90 EUR
Relay (team)	215 EUR
Transport package for WOC	100 EUR
Banquet for athletes and team leaders	20 EUR

The accreditation fee for team officials includes: model events, competition maps, start and result lists, team parking. Teams where the functions of the team official are performed by an athlete shall not be charged a fee for a team official.

The WOC entry and accreditation fees include participation in the WOC competitions, model events, competition maps, team parking.

WOC transport package includes transport from the Event Centre to the Sprint, Sprint Relay, Middle Distance, Relay and Long Distance, including all the Model Events.

PIEDZĪVOJUMU PARKS TARZĀNS

www.tarzans.lv



SIGULDA Adventure Park Tarzans



Tube Sliding



Chairlift



Toboggan Track



Archery



Crazy Roller



Trampoline park



KIDS safari park



Electric pedal cars



Pedal Go-Karts



Children's Driving School



Bouncy Castles



Jungle Climb



Children's Go-karts



Radio-controlled buggies



Jungle Jump



Catapults



Giant Swing



Bungee Trampolines

Sigulda Obstacle Park

10 TRACKS
130 OBSTACLES



Martins Dukurs
8 time World Cup overall
winner's skeleton

Māris Štrombergs
BMX 2 time Olympic
Champion's bike



BEST security system

All parks are equipped with continuous safety system from Swiss company Kanoepo.



15. REGISTRATION AND ACCREDITATION FOR VIP AND IOF OFFICIALS

VIP: s and IOF Officials registration and requests for transportation are to be made in IOF Eventor. There is a specific Guide on how to enter for VIPS and IOF Officials: <https://eventor.orienteering.org/Documents/Event/2128/Entry-Guide-for-Media%2c-VIP-and-IOF-Officials>

IOF officials hotel is Hotel "Sigulda", contact: accommodation@woc2018.lv for accommodation bookings.

Link to registration: <https://eventor.orienteering.org/Events/Show/5120>

FEES (See guide if you are an VIP or IOF Official)

Registration / Accreditation fee 100 EUR

Transport package 100 EUR

The accreditation includes:

- VIP services in the competition arenas
- Competition maps

Registrations must be confirmed by 03.07.2018.

IOF Officials have no fee (See guide if you are an VIP or IOF Official).

16. CLOTHING

There are no regulations regarding clothing. Choice of footwear is free for Long Distance, Middle Distance and Relay. Shoes with any kind of metal (spikes, dobb spikes) are not allowed for Sprint Qualification, Sprint Final and Sprint Relay.

Team tents will be allowed at Prestart zone of forest events in Sigulda and Turaida.

17. ANTI-DOPING

Doping is strictly forbidden and the organizers of WOC 2018 are dedicated to supporting the anti-doping authorities in their work.

Doping tests are always carried out in accordance with the procedures described in the WADA International Standard for Testing. The IOF Anti-Doping Code and rules and the World Anti-Doping Code 2015 apply as of 1st January 2015.

Athletes who are selected for the doping tests must bring an official identification (with photo) to the doping test area. The athlete should also bring along their therapeutic use exemption (TUE) if applicable. In general, it is advisable that the athletes bring along their ID to all the competitions and events.

For more information, please consult: <http://orienteering.org/anti-doping/>

18. CLIMATE AND HAZARDS

August in Latvia is the second warmest month of the year, with average temperatures between 18°C and 20°C, while maximal temperature up to 30°C is possible. July and August are also the months most abundant in precipitation. In August, already during a course of many years, in 13-16 days on average are rainy, with average monthly rainfall amount throughout Latvia 78 mm.

Wild bees can be possibly encountered in middle, relay and long distance areas. Ticks, carrying Tick-borne encephalitis and Lyme-disease are present in Baltic countries.

WATER AND LEISURE PARK



SIGULDAS
SPORTA CENTRS

www.siguldassports.lv

📍 Ata Kronvalda street 7A, Sigulda, Latvia

☎ 25448860; 67973111

✉ sportacentrs@sigulda.lv

📘 [Siguldassports](https://www.facebook.com/Siguldassports)



19. VISAS

Nationals of the European Union (EU), the European Economic Area (EEA) and any third-country national holding a residence permit of a Schengen State do not need a visa to enter Latvia. For more information, please refer to the website of the Ministry of Foreign

Affairs <http://www.mfa.gov.lv/en/consular-information/entry-into-schengen>

20. LIVE PRODUCTION / TV / LIVE RESULTS

For all the finals TV / LIVE production is planned. For qualification competition only live results will be provided.

21. MEDIA

The Media Centre will be located in the Event Centre, situated in the temporary premises of the Culture Centre of Sigulda, 3 Raiņa iela. Media areas in the arenas are equipped with all necessary communication facilities. Special access to terrains may be provided for accredited photographers.

Press conferences will be held in the media area at the arenas directly after the flower ceremonies at every competition day, depending on the starting times for men and women.

Media Accreditation gives rights to enter designated areas and use designated services for media; receive course maps, start and result lists; refreshments at the media facilities.

Media accreditation is done in IOF Eventor, <https://eventor.orienteering.org/Events/Show/5120>. Please read through the accreditation guide before entering: <https://eventor.orienteering.org/Documents/Event/2128/Entry-Guide-for-Media%2c-VIP-and-IOF-Officials>. There is no fee for media accreditation. All accredited media are requested to show their passports (and/or press cards) as proof of identity when collecting their accreditation documentation at the Event Centre. Please do let us know if you are unable to pick up your accreditation at the Event Centre, then we find another solution.

There is no dedicated transportation for media personnel. Though we might be able to arrange transportation to dedicated photo controls in the forest during some of the competition days. There will be media parking areas on each race day. A media parking permit will be provided in the accreditation package.

A WOC 2018 media package will be available when you pick up your accreditation. This will contain essential information about the event and the races including more detailed information on media access to race terrain, media parking permit, and a copy of Bulletin 4.

Media who wish to cover the Nokian Tyres World Orienteering Championships, have to fill the accreditation form by 3 July 2018.

Info meeting for all media will be held on every competition day in the Media Centre. We will announce the meeting times at least 2 weeks before the event.

Media contact: Juris Vaidakovs
WOC Media Manager
Mobile +371 29453838 Email: media@woc2018.lv

22. IOF /MEDIA RACE

The IOF/VIP/Media race will take place on Wednesday, 8 August in Līgatne (20 km from Sigulda). A very beautiful area with numerous sandstone rigs (cliffs) and caves. For more information, see <http://www.visitligatne.lv>

The race will have 3 different courses: short, middle and long. The race is open during 14:00-16:00. Refreshments are offered after the race.

Entry to the race will be available at www.woc2018.lv. The IOF/VIP/Media race entry deadline is July 3.

23. PUNCHING SYSTEM / GPS

SPORTident Air+ touch-free punching system will be used in all competition formats. Air+ chips will be provided by the organisers.

GPS-tracking is provided in all finals by GPSseuranta. All runners in the finals will be using tracking devices.

24. MODEL EVENTS

Technical Model is in Riga near the Model of the Sprint competitions. The start, finish and control set-up used at the WOC competitions and the device used for punching and timing will be demonstrated. Runners will have the possibility to test the equipment.

The sports drinks used at the refreshment controls will also be served.

The WOC maper team also mapped all Model maps.

More details will be published in Bulletin 4.

25. LATVIA OWEEK - SPECTATOR EVENTS

Saturday, 4 August

Sunday, 5 August

Monday, 6 August

Tuesday, 7 August

Wednesday, 8 August

Thursday, 9 August

Friday, 10 August

Saturday, 11 August

Sunday, 12 August

More information about spectators race "LATVIA O-WEEK" in web page:

<https://www.woc2018.lv/o-week/>

Day 1, Riga, Kronvalda Park - sprint.

Day 2, Carnikava - long distance.

Rest day for WOC and LOW participants; excursions.

Day 3, Latvian Ethnographic Open Air Museum, forest sprint.

Day 4, Sigulda - middle distance.

Rest day for LOW participants; excursions.

Day 5, Mazie Kangari - middle distance.

Rest day, WOC long distance

Day 6, Turaida - long distance.



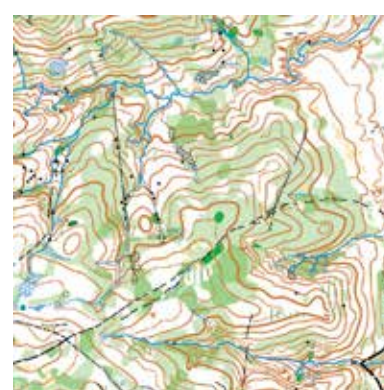
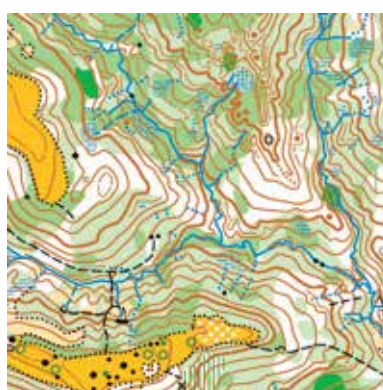
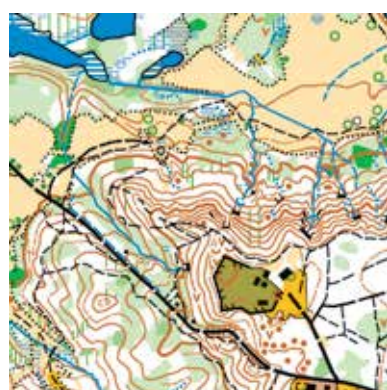
26. COMPETITION TECHNICAL

MAPS

Maps are drawn according to the International Specifications for Orienteering Maps (ISOM 2017) and the International Specifications for Sprint Orienteering Maps (ISSOM 2007).

Race:	Map:	Scale:	Contour interval:
Sprint Qualification	Riga	1:4000	2 m
Sprint Final	Riga	1:4000	2 m
Sprint Relay	Riga Agenskalns	1:4000	2 m
Middle Distance	Sigulda	1:10 000	5 m
Relay	Turaida	1:10 000	5 m
Long Distance	Turaida	1:15 000	5 m

MAP SAMPLES



Links to previous maps of the competitions areas can be found at

www.woc2018.lv/old-maps/

Preliminary course information:

Race	Length of the course for men	Climb for men	Winning time for men	Length of the course for women	Climb for women	Winning time for women
Sprint Qualification	3,7 km	10 m	12 minutes	3,0 km	10 m	12 minutes
Sprint Final	4,0 km	15 m	13 minutes	3,2 km	15 m	13 minutes
Sprint Relay	4,3 km	25 m	14 minutes per leg	3,6 km	25 m	14 minutes per leg
Middle Distance	5,6 km	250 m	33 minutes	4,5 km	190 m	33 minutes
Relay	5,5 km	280 m	33 minutes per leg	4,4 km	210 m	33 minutes per leg
Long Distance	15,5 km	560 m	95-100 minutes	9,7 km	390 m	75-80 minutes

TERRAIN DESCRIPTIONS

Sprint Qualification

Sprint Qualification will be held in a part of Riga centre which is a mix of separate business areas, some residential and enclosed areas, and a park divided by impassable watercourse.

Sprint

Sprint Final will be held in the Old Town of Riga (UNESCO World heritage site) – a medieval city that continued to evolve over the centuries.

Sprint Relay

Sprint Relay will be held in a part of Riga on the left bank of the river Daugava – the city's territory developed in the first half of 20th century, with some later developments. Urban area: mostly private and multi-apartment residential housing, and a park.

Middle Distance

Ravines next to the Gauja river with tiny rivulets. Spruce and pine forest of medium runnability.

Many deciduous trees in the flood-lands next to the river, making running hard. Height difference 75 m.

Relay and Long Distance

The ravine of the Gauja river valley with side ravines. Forests of various types. Roads and paths of various categories. Height difference 95 m.

REFRESHMENT

Athletes are offered pure water and sports drink at the refreshment stations. Sports drink offered from ISOSTAR. More information about refreshments in Bulletin 4.

COACHING ZONES

There will be marked coaching zones in the arenas when there is an arena passage. Two accredited coaches per team are allowed inside the zone.



TEAM OFFICIALS' MEETINGS

Team officials' meetings will be held in the Conference Hall "Sigulda" on the ground floor of the Hotel Sigulda. The distance from the Event Centre is 50 m. Use parking at Event Centre and not at Hotel Sigulda

COMPETITION ARENAS

Sprint Qualification

Sprint Qualification location in the city centre of Riga. Arena location 56°57'21.9"N 24°06'27.0"E

Sprint Final

Sprint Final location Old Town of Riga.
Arena location 56°56'50.9"N 24°06'23.5"E

Sprint Relay

Sprint Relay will be held in Āgenskalns district in Riga, located at the left bank of Daugava. Arena location 56°56'29.8"N 24°04'56.3"E

Middle Distance

Middle distance location in the city Sigulda.
Arena location 57°08'24.8"N 24°49'01.0"E

Relay and Long Distance

Relay and Long distance location around the castle Turaida.
Arena location 57°11'12.0"N 24°51'01.9"E



www.woc2018.lv

Title Sponsor



Sponsors / Supporters / Organizers



PHOTO: www.LiveRiga.com / www.photomiller.com / Donatas Lazauskas - www.orienteeing.lt / Gunārs Dukāte

