



Welcome to the  
WORLD SKI ORIENTEERING  
CHAMPIONSHIPS  
PITEÅ, SWEDEN 19-24 MARCH

# 2019

## Bulletin 2

# WSOC

Piteå



## DEAR SKI-ORIENTEERING FRIENDS

The organising committee for the 2019 ski-orienteeing World Championship events are proud to welcome competitors, coaches, spectators and invited guests from across the world to Norrbotten, Piteå and the superb Lindbäcksstadion. We are certain that those of you who make the trip to Piteå for the events will discover what a fantastic place it is for ski-orienteeing, for holidays and to live in. Here you will find a coastline and archipelago with kilometre-long beaches, perfect for skiing and snowmobiling during the winter or for bathing or boating during the summer. Here you will find the expansive orienteeing forests with opportunities for hunting, fishing and a wide range of other outdoor activities. Here you will also find the nine orienteeing clubs who together aim to give you an unforgettable week in Sweden no matter whether, at the end of it, you are standing highest on the medal podium, mourning broken skis or brushing away the last flakes from the waxing bench.

Not only are the events being arranged in the vicinity of one of Sweden's finest and most modern ski arenas, Lindbäcksstadion, your event accommodation is located at the very heart of the Swedish Riviera, Piteå havsbad. You will be arriving at a time when the landscape is beginning to show itself from its best side. The snow is still lying deep across the region but the days are long and the sun has started to make its warmth felt. This is the time of year when the residents of Piteå can pack a rucksack and take their skis or snowmobile out to the archipelago or simply find a south-facing wall to rest up against.

However, resting up is not something you will be doing much of. Our experienced and knowledgeable course planning team will see to that. Instead you should look forward to a week of demanding route choices, challenging orienteeing and fantastic skiing of world's class.

Finally, we would like to take this opportunity to quote the motivational words which will help guide us, the organisers, through the preparation work:

**"The World Championship events in Piteå 2019 will deliver fair and just competitions, raising the public profile of ski-orienteeing, promoting top performances and providing an arena for social interaction."**

– When you eventually wave goodbye to Piteå and return to your homes, we hope that these words will represent the memories you take with you.

**Anders Bennitz**  
General secretary



## EVENT PROGRAMME

	WSOC 2019	JWSOC/EYSOC 2019	WMSOC 2019
Tu 19/3	Model event	Model event	_____
We 20/3	Long + opening ceremony	Long + opening ceremony	Model event + opening ceremony
Thu 21/3	Sprint	Sprint	Long
Fr 22 Mar	_____	_____	Middle
Sa 23 Mar	Middle	Middle	_____
Su 24 Mar	Relay	Relay	Middle

In order to put together a good program of events, adapting to future World Championships, the organisers, together with the IOF, have decided to not include a sprint relay in the 2019 program.

## VENUE

**Event center and accommodation:** Pite havsbad, Piteå

GPS-coordinates: 65.23316, 21.53435

Pite havsbad is located approximately 65 km from Luleå airport (LLA), 85 km from Skellefteå airport (SFT) and 10 km from Piteå city centre.

**Competition centre:** Lindbäcksstadion, Vallsberget, Piteå

GPS-coordinates: 65.314160, 21.289658

Lindbäcksstadion is located approximately 20 km from the Event center

**Reserve arena:** Prästberget, Arvidsjaur

GPS-coordinates: 65.586401, 19.152570

The reserve arena is located approximately 130 km west of Piteå.





## CLASSES AND PARTICIPATION RESTRICTIONS

WSOC has two classes: W21 and M21.

All competitors represent a National Federation.

A competitor may represent only one National Federation during any one 12 month period running from November to October. Competitors shall have full passport-holding citizenship of the country of the National Federation they are representing.

Each National Federation may enter a team with an unlimited number of competitors.

For each individual competition, a National Federation may enter a maximum of 4 women and 4 men. In addition, the current World Champion for that distance may be entered by their National Federation provided they are members of the Federation's team.

In the Relay, each National Federation may enter one women's team and one men's team, each consisting of 3 team members. Teams with competitors from more than one National Federation are not allowed but incomplete teams may start. Winning time and course length according to the rules.

## ENTRIES AND ENTRY FEES

**Entries are to be registered by team managers via IOF Eventor.**

The following information is required at the latest by 19th January 2019 (-2 months):

1. Number of participants (men, women).
2. Number of relay teams.
3. Number of team officials.
4. Team manager's name, address, e-mail address and mobile telephone number

**The following information is required at the latest by 9th March 2019 (-10 days):**

5. Name and gender (man, woman) of the participants.
6. Names of the team officials.

### **Late Entries:**

Late entries and changes to registered entries will be possible up until 15.00 on 19th March 2019. These should be sent directly to the event organiser who will then register the details in IOF Eventor.

### **Fees for late entry fees and changes to registered entries**

	Entry	Withdrawal of entry
19/1-9/3	+20%	-80%
10/3-19/3	+50%	-50%
Name change	10 €	

### **Competition fees:**

Individual	60 €
Relay	180 €
Competitor accreditation fee	60 €
Team official accreditation fee	80 €

The accreditation fee for competitors covers the right to participate in the races, the model event and the banquet.

The accreditation fee for team officials covers the model event, access to coaching zones, competition maps, start- and result lists and the banquet.

## PAYMENT

Following the deadline for registering the number of participants and team officials (-2 months), the event organiser will issue invoices for accreditations, entry registration and waxing huts.

**Invoices should be paid in full at the latest by 5th February 2019 (-6 weeks).**

For changes made after this date, the payment/refund of fees is to be made at the event secretariat upon arrival at the competitions.

A penalty fee will be liable for late payments.

## ACCOMMODATION

**Accommodation and the Competition office are located at Pite havsbad, Piteå.**

Booking and payment of accommodation and meals should be made directly to Pite havsbad, **[www.pite-havsbad.se](http://www.pite-havsbad.se)** or by telephone **+46 703032757**.

Please use the **reference code VM2019**.

Booking is possible up until **15th February 2019**. Note that availability is on a first come-first served basis so please book as early as possible.

### **Accommodation:**

All accommodation options include breakfast and access to cooking facilities in the Service building. The prices indicated are per person, per night including VAT.

Single room - 900 SEK

Share of a double room - 500 SEK

Share of a three-beds room - 400 SEK

Share of a four-beds room - 300 SEK

Dormitory with own sleeping mat and sleeping bag. Includes access to adventure baths / pool - 300 SEK

Caravan / camper van pitch (price per day, including electricity) - 250 SEK

### **Meals:**

Meals will be available at Pite Havsbad the following times:

Lunch 11.00-14.00 - 95 SEK

Buffet 17.00-20.00 - 140 SEK

The banquet on Sunday is included in the accreditation fees. Non-accredited persons that wish to attend the banquet should contact the organizers at arrival.

## TRAVEL INFORMATION

The simplest way to get to Piteå is either by car or by air and rental car. Bus and train are also possibilities but are more expensive and less flexible than car and air.

### **By car to Piteå**

**Through Sweden:** The E4 highway starts at the ferry terminal in Helsingborg in the far south and via Stockholm takes you all the way, approximately 1400 km, to Piteå.

**Through Finland:** The E75/E8/E4 highway route starts at the ferry terminal in Helsinki and takes you the 920 km to Piteå via Jyväskylä and Torneå.

### **By air to Luleå airport, Luleå (LLA)**

Fly with SAS or Norwegian from Stockholm Arlanda airport (ARN) or Gothenburg Landvetter airport (GOT).

The distance from Luleå airport to the Event centre is approximately 65 km.

### **By air to Skellefteå airport, Skellefteå (SFT)**

Fly with SAS or Norwegian from Stockholm Arlanda airport (ARN).

The distance from Skellefteå airport to the Event centre is approximately 85 km.

A number of car rental companies are represented at both airports. Our ambition is to be able to offer a range of car rental options for event participants. Further information will be given in Bulletin 3. We are also working on arranging basic bus transportation between the event centre, city centre and the competition arena. Any further information will be given in Bulletin 3.

If there is a demand, the organiser can arrange local transport at cost price. If you wish this to be arranged please contact the event organiser in good time before the event, at the very latest by 18th January 2019. However, in our view this option is both more expensive and less flexible than renting your own car.

Photo: SOFT and Ice Arena: Tone Brunes.



**PITEÅ IS PACKED** with things to do for all tastes and ages. We've got major annual events attracting hundreds of visitors, but also smaller local events such as barn dances, a range of concerts, open-air theatre and the city's popular second-hand markets.

**SHOPPING** - Friendly and relaxed shopping, socialise as you shop – that's the best way of describing the Piteå shopping experience. Our shops are packed with the latest fashions and excellent offers.

The Back City shopping district is expanding its range and Piteå is continually growing as a retail destination. If you'd rather head out into the countryside, you'll find farm and country shops to discover.

**MAKING YOUR EVENT AN EXPERIENCE TO REMEMBER**

Piteå is a popular host city offering attractive accommodation, professional conference solutions and a wide range of entertainment and activities. We also know that many of our guests choose to hold their meetings here because the entertaining experiences we offer are a little out of the ordinary.

Photo: SOFT



## WAXING FACILITIES AND SKI WAXING SERVICE

Waxing facilities are available at the competition arena. These have electrical connections, are heated, ventilated and lockable. Two sizes are available: 20 m<sup>2</sup> units (600 €) and 10 m<sup>2</sup> units (400 €). Availability is first come-first served. The indicated prices cover the full competition week and may be used by all the teams (WSOC/JWSOC/EYSOC) from the same nation. Bookings are made by sending an e-mail to [info@wsoc2019.com](mailto:info@wsoc2019.com). Invoices will be issued together with those for the entry registration fees.

## MAP SCALES AND SIZES

All maps are A4 size (21 x 30 cm) with a 5-metre contour interval.

Distance	Map Scale
Long	1:15000
Sprint	1:5000
Middle	1:10000
Relay	1:10000

## TERRAIN

The terrain in the immediate vicinity of Vallsberget/Lindbäcksstadion consists of a number of small hills/tops. The area is between 0 and 120 m above sea level. The terrain is 90% forest, mainly evergreen, with only a limited area of cultivated land and a few roads. Lindbäcksstadion is a modern skiing facility with 25 km of 5-10 m wide ski tracks, an indoor ski tunnel and a small downhill ski slope.

Piteå has a subarctic climate between the warm Gulf stream in the west and the continental mass to the east. It experiences relatively long and cold winters. In March the average temperature is -6°C with cold nights and warmer days.

	Nov	Dec	Jan	Feb	Mar
Average Temp (°C)	-3.7	-8.4	-11.3	-11.2	-6
Minimum average temp (°C)	-7	-12.6	-15.9	-15.9	-11
Highest average temp (°C)	-0.4	-4.2	-6.7	-6.4	1
Precipitation (mm)	54	43	37	28	29

## PUNCHING SYSTEM

The Punching system is still to be determined but will be one of those approved by the IOF (EMIT or SI). Once a decision has been made about which punching system will be used, this will be indicated in the event information published in IOF Eventor.

## OPPORTUNITIES FOR TRAINING

There is an opportunity for teams to hold training camps in Älvsbyn during the winter 2018/2019. The distance from Piteå is approximately 50 km and from Luleå airport approximately 60 km. A prepared track system will be made available in Älvsbyn in the period February - March.

The terrain at the training camp will be representative for the terrain at the competition area and the tracks will be prepared and maintained by the same person with responsibility for the track system during WSOC. Help with training exercises and setting out of controls can also be arranged if requested.

For further information, estimated costs and bookings please contact: Sture Norén, [sture.noren@afhs.nu](mailto:sture.noren@afhs.nu)

How the track system at the training camp in Älvsbyn looked on 1st February 2018.



## VISA REQUIREMENTS

Information regarding requirements for visas can be found at the following sites:

<https://www.migrationsverket.se/English/Private-individuals/Visiting-Sweden.html>

<http://www.government.se/government-policy/migration-and-asylum/list-of-foreign-citizens-who-require-visa-for-entry-into-sweden/>

## EMBARGOED AREAS:

Embargoed areas can be found on IOF Eventor or via Google My Maps. Click on the relevant area to view detailed information regarding the embargo:

**[https://drive.google.com/open?id=14GYd\\_ZtCsXZlb1xdCymSk\\_YQidM&usp=sharing](https://drive.google.com/open?id=14GYd_ZtCsXZlb1xdCymSk_YQidM&usp=sharing)**

The competition area at Lindbäcksstadion, Piteå, is out of bounds during the period 10th September 2017 to 24th March 2019 for all prospective athletes and coaches taking part in WSOC2019 with the exception of the roller-ski and artificial snow tracks at the Lindbäckstadion. These may be used up until 31st December 2018.

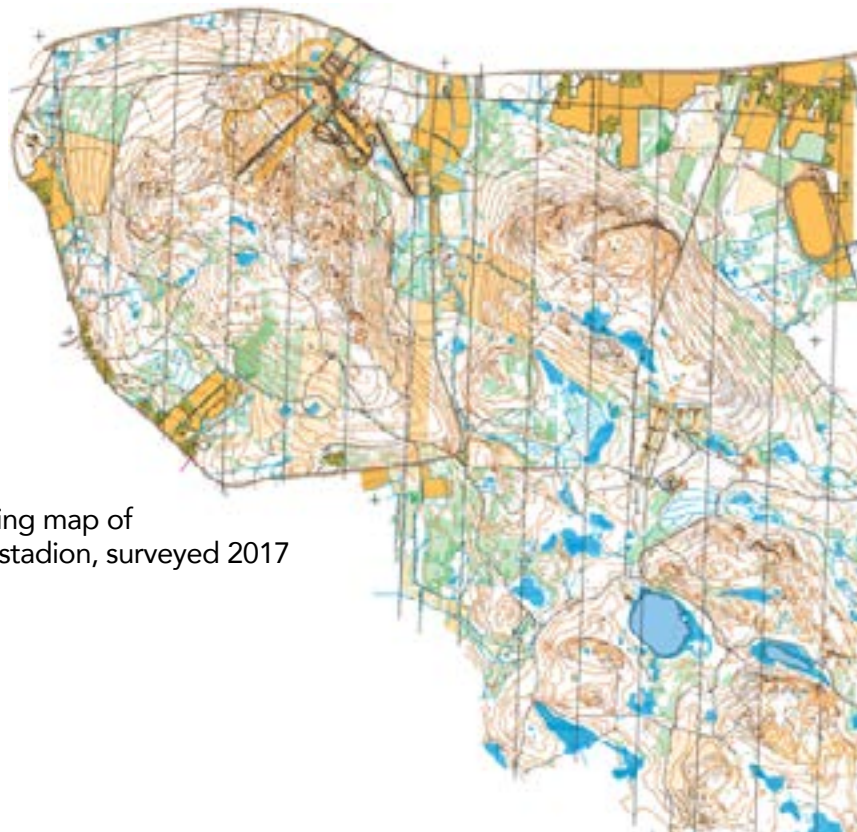
Permission can be given for those competing in standard cross-country ski races during this period. Please contact the general secretary of the event in good time in order to arrange such permission.

The reserve area in Arvidsjaur is out of bounds during the period 10th September 2017 to 24th March 2019 for all prospective athletes and coaches taking part in WSOC2019.

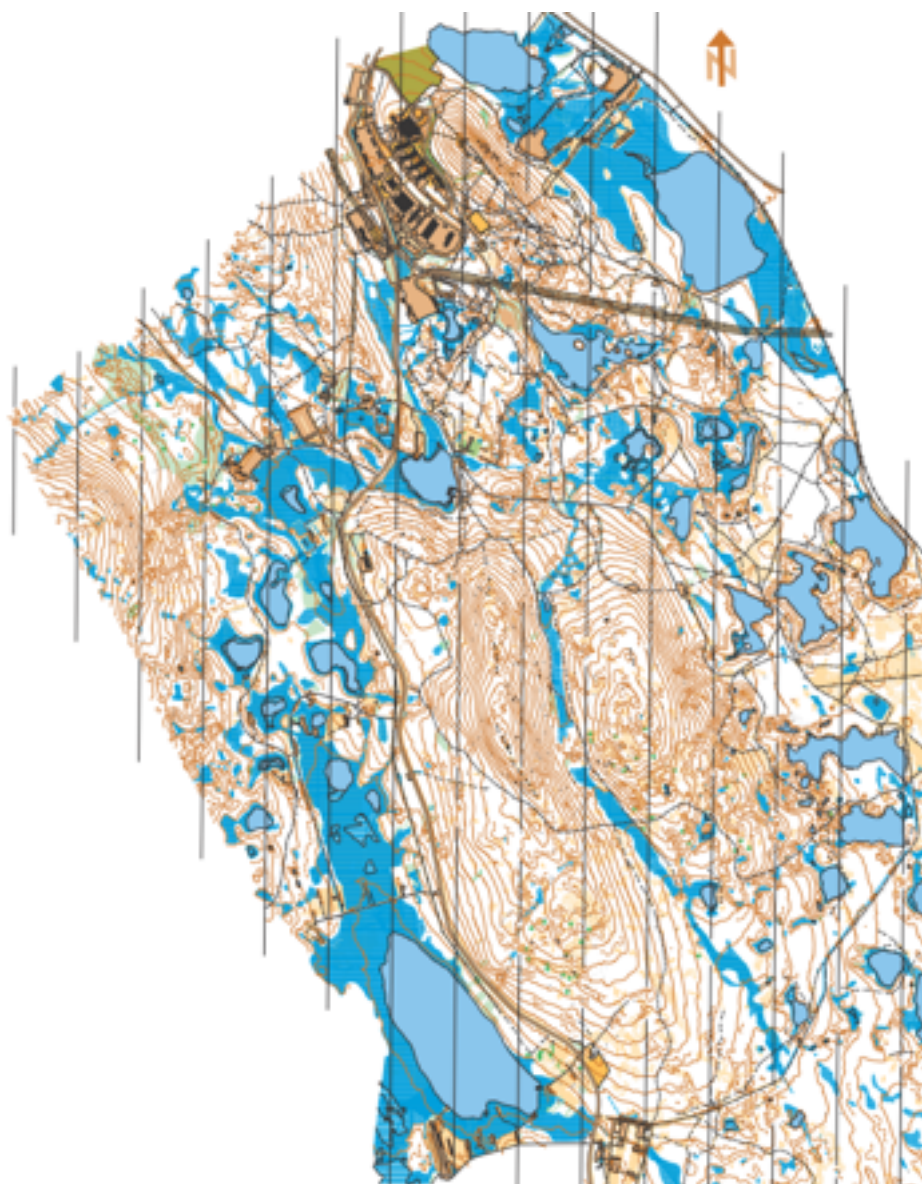
## PREVIOUS ORIENTEERING MAPS:

High-resolution copies of the latest versions of the foot- and ski-o maps for the competition and reserve areas are available via Google My Maps. Click on relevant area to find links to each map:

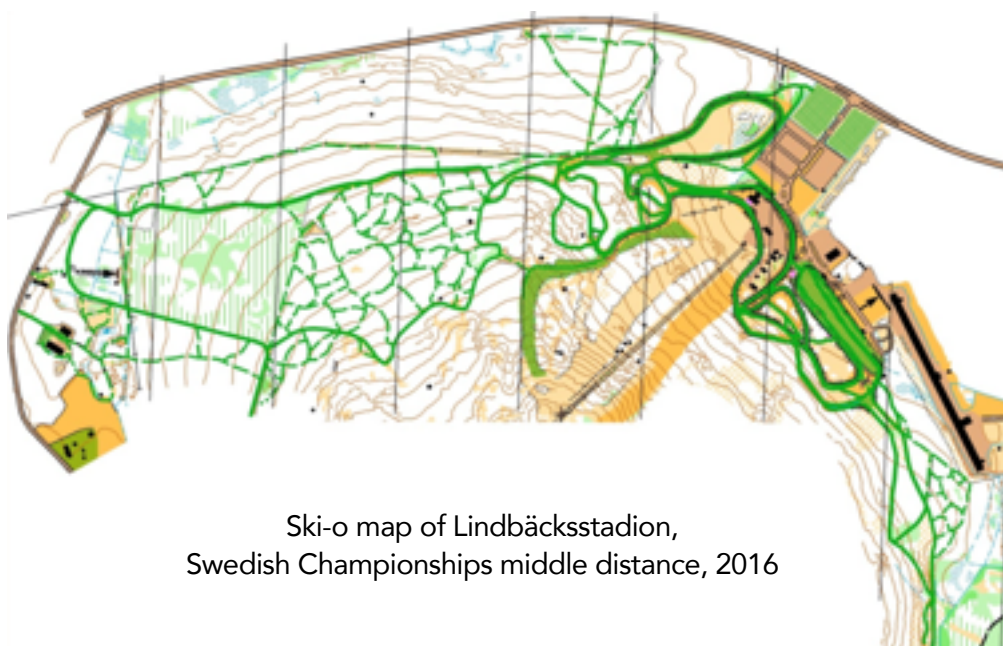
**[https://drive.google.com/open?id=14GYd\\_ZtCsXZlb1xdCymSk\\_YQidM&usp=sharing](https://drive.google.com/open?id=14GYd_ZtCsXZlb1xdCymSk_YQidM&usp=sharing)**



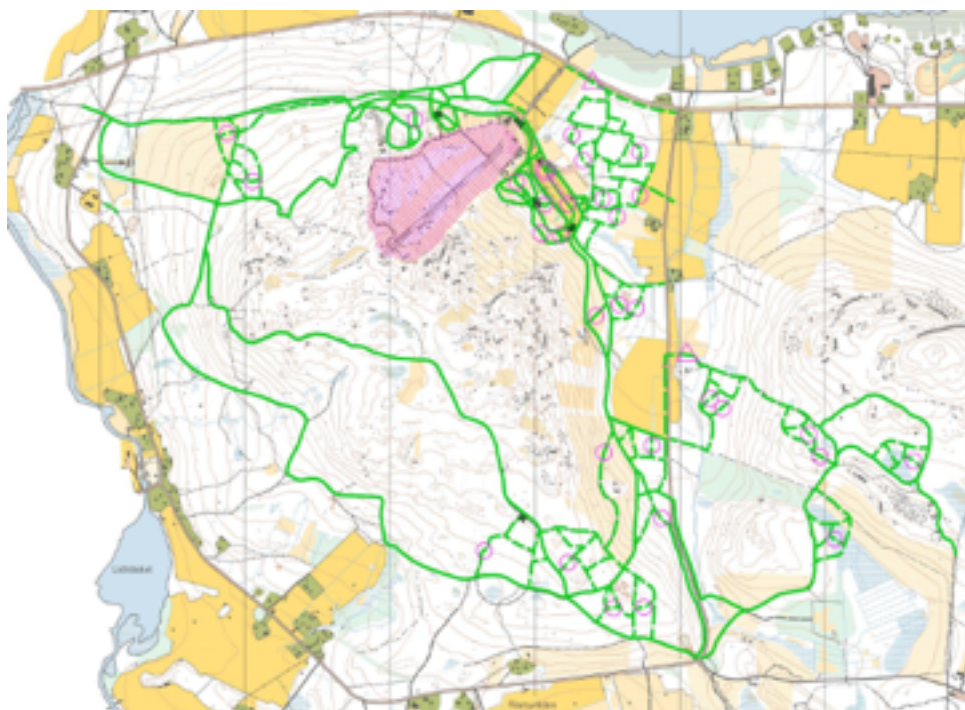
Orienteering map of  
Lindbäcksstadion, surveyed 2017



Orienteering map of the reserve area, surveyed 2017



Ski-o map of Lindbäcksstadion,  
Swedish Championships middle distance, 2016



Ski-o map of Lindbäcksstadion, local event, 2013

## MEDIA CONTACTS AND ACCREDITATION

Media coordinator/press manager Petter Norén,  
info@wsoc2019.com, +46 70 666 5031

Accreditation is issued upon request via e-mail to the address given above or via direct contact with the media coordinator/press manager.

## ORGANISERS:

The Swedish Orienteering Federation  
The District Orienteering Federation of Norrbotten  
Piteå municipality

Together with a consortium consisting of the following orienteering and ski clubs:

Piteå IF  
Piteå Skidallians  
Älvsby IF OK  
Arvidsjaur OK  
I19 IF  
Bodens BK OS  
OK Renen  
Gammelstads IF  
Bergnäsets AIK

**General Secretary:** Anders Bennitz

**Event Director:** Roland Jansson

**Support functions:** Fredrik Lundström

**Map and tracks:** Sture Norén

**Media:** Petter Norén

**Course planner:** Long: Sture Noren  
Sprint: Nils Henriksson  
Middle: Claes Turesson  
Relay: Lena Turesson

## EVENT CONTROLLERS:

IOF Senior Event Adviser: Lacho Iliev (BUL)

IOF IT Assistant Event Adviser: Håkan Blomgren (SWE)

National Controller: Håkan Holmberg (SWE)

## CONTACT INFORMATION:

Address: WSOC 2019, c/o Ann Jansson, Kompanivägen 33 Lgh 1702, 974 44 Luleå, Sweden

Telephone: +46 70 600 50 55

IOF Eventor: <https://eventor.orienteering.org/Events/Show/5829>

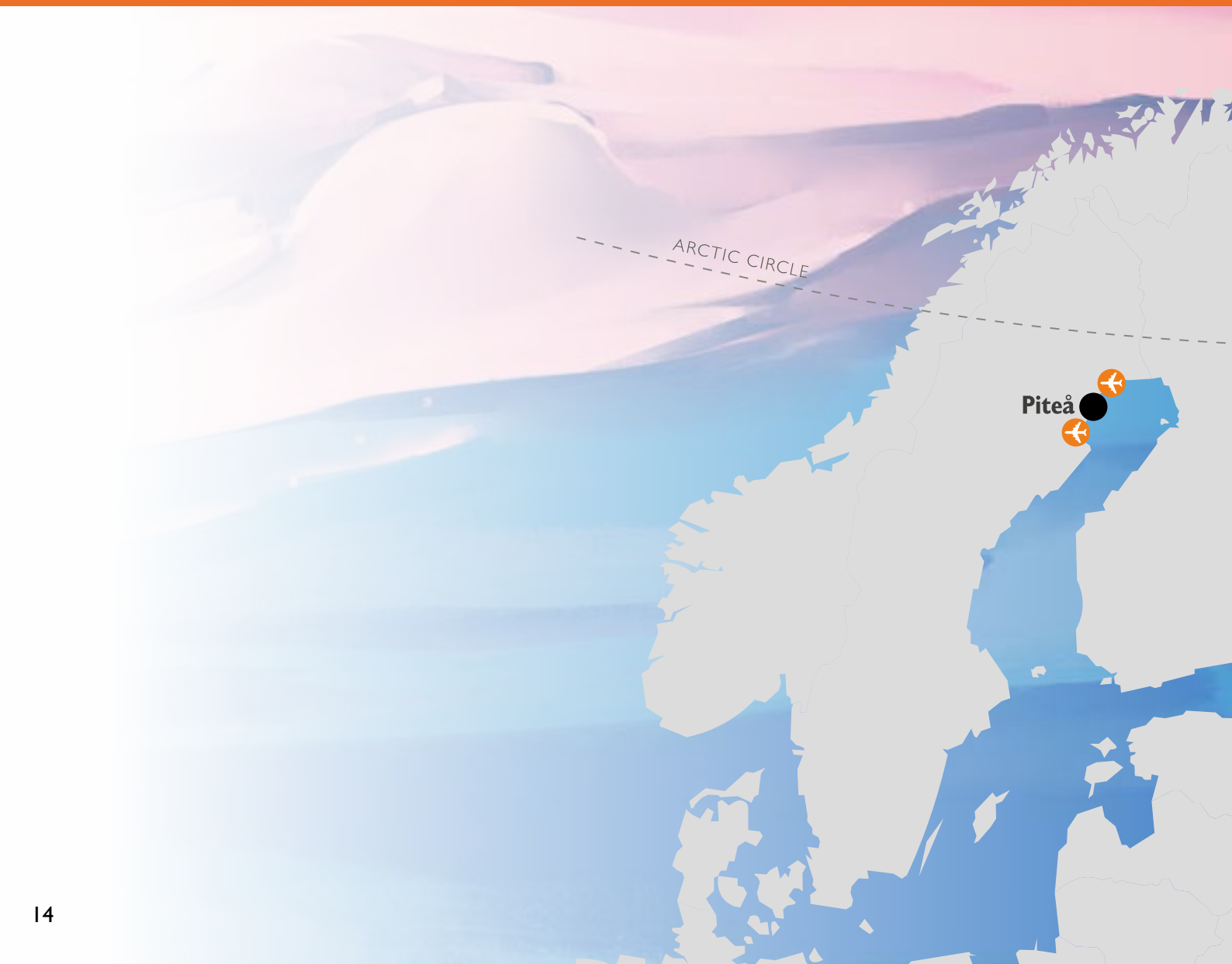
E-mail: info@wsoc2019.com

Web page: [www.wsoc2019.com](http://www.wsoc2019.com)

## SUMMARY OF IMPORTANT DATES

The final dates for registering entries, booking accommodation etc. are summarised in the table below. Please note the additional fees that apply for late entries.

Entry registration	19 Jan 2019 (-2 months) – phase 1 9 Mar 2019 (-10 days) – phase 2
Payment of entry fees (closing date)	5 Feb 2019
Booking of accommodation and meals	15 Feb 2019
Late entry	19 Mar 2019
Event/competition dates	19-24 Mar 2019



## NORRBOTTEN AND PITEÅ

**PITEÅ** is situated in Norrbotten in Swedish Lapland, and is known as one of the largest tourist destinations in Northern Sweden. A place of contrasts - light and darkness, warmth and cold, the mountains and the archipelago.

Sweden's highest water temperatures are often recorded at Pite Havsbad on the Nordic Riviera – hard to believe if you heard the ice crunching against the hull of an icebreaker a few months earlier. The sea ice of the Gulf of Bothnia also serves as an arena for skating, dog sledding and snow-mobile safaris. Piteå has also been designated as a Sustainable City by the Swedish Energy Agency.

**PITE HAVSBAD** is one of northern Europe's largest tourism and conference centres. There really is something for everyone, and every age, from all the fun of the Skeppet activity centre to children's entertainment and magnificent shows. The complex attracts visitors all year round.

In the winter we'd recommend an impressive trip on the Arctic Explorer ice breaker – a memory to last a lifetime!

In the summer enjoy lazy days on the beach, interspersed with fun in the water-park or amusement park, golf, karting, beach volleyball and street basketball.

### LINDBÄCKS STADIUM

Svensbyn is a lively rural community situated approximately 15 km outside Piteå town centre and approximately 13 km from Pite Havsbad. A stone's throw away is **Lindbäcksstadion**, a strategically important ski- and winter sports facility for the residents of Piteå as well as the local tourist industry. Significant plans are underway to further develop the facilities in a collaboration between Piteå district council, industry and local organisations.

At Lindbäcksstadion there is a downhill ski-slope with three separate runs and a fun/snowpark. There is also a biathlon range with 20 targets and an indoor ski tunnel which is planned to be the world's longest.

The track system for cross-country skiing has been developed for both everyday use and competitions. A number of the competition tracks are homologised according to FIS specifications. A 3 km asphalt roller-ski track and a separate artificial snow-making facility for both downhill and cross-country are available and a new competition office as well as a 500 m<sup>2</sup>, two-floor building housing waxing facilities have recently been added. The development of the ski stadium area has meant that we have a facility unique in Sweden in that spectators can follow the competitors during races.

Several cross-country ski events at national and international level have been held at Vallsberget, now called Lindbäcksstadion, all of which have been well attended. The Swedish national cross-country ski championships have been held here in 1978, 1999, 2010 and 2016. The Swedish relay championships in 1999 attracted almost 15 000 visitors and, as with the Swedish championships in 2010 and 2016, were broadcast live on national television.

