



European Trail
Orienteering
Championships
Slovakia



BULLETIN 3

February 2018

WWW.ETOC2018.SK

Contents

WELCOME BY THE CHAIRMAN OF THE SLOVAK ORIENTEERING ASSOCIATION	3
WELCOME BY THE EVENT DIRECTOR	4
VENUE	5
ORGANISING TEAM, COMPETITION RULES, TRAINING POSSIBILITIES	6
EVENT PROGRAMME	7
ENTRIES, ACCREDITATION AND ENTRY FEES, ESCORTS	8
LIST OF ENTRIES	9
PARTICIPATION, CATERING, TRANSPORT, VISAS	10
EVENT CENTRE, ACCOMMODATION	11
CLIMATE, HAZARDS, PRELIMINARY INFORMATION ABOUT COURSES	12
PUBLIC COMPETITIONS	12
EMBARGOED AREAS, ZERO TOLERANCE	13
TERRAIN AND MAPS	14
ORGANISERS, SPONSORS, PARTNERS	16

info@etoc2018.sk

www.etoc2018.sk

www.facebook.com/etoc2018

+421 908 226 250

Welcome by the Chairman of the SLOVAK ORIENTEERING ASSOCIATION



Welcome,

On behalf of the Slovak Orienteering Association, a warm welcome to Slovakia and to Bratislava and its surroundings for the European Trail Orienteering Championships 2018!

We are thankful to the IOF for providing us with the responsibility to organise this important event, and we are ready to prepare as nice, demanding and exciting events as possible. The core organisers are our best Trail O athletes – Jan and Dušan Furucz, Marian Mikluš and many others. Their experience, supported by the IOF Adviser and other helpers, should guarantee not only the technical but also the social quality of the event.

The Slovak Orienteering Federation is one of the smaller IOF members, with about 500 active orienteers in total, most of them involved only in foot orienteering. However, small can be effective – both from the point of view of results and of organising. The Trail O European Championships is the highest level event so far organised by our federation in this discipline. However in other disciplines many still may remember MTBO World Championships in Donovaly, Foot O Junior World Championships and Students World Championships in Košice, recent European Youth Championships in Banská Bystrica and SkiO Junior World Championships in Tajov and Donovaly. All these event were major successes and we will do our best to continue in such tradition.

We hope that in the year 2018 both the orienteers and spectators will have an unforgettable and amazing experience with the European Trail Orienteering Championships!

Juraj Nemec

Welcome by the Event Director



Dear orienteering friends,

I would like to welcome all competitors, officials and guests, on behalf of the Organising Committee and orienteering club Slávia Farmaceut Bratislava, to the European Trail Orienteering Championships 2018 in Slovakia.

The Slovak Orienteering Association has great experiences with organising some important events in the past. These include the Junior World Orienteering Championships 2012 in Kosice, World University Orienteering Championships 2006 in Kosice, Orienteering World Cup in years 1988 (Silická planina) and 1998 (Tatranská Lomnica), European Youth Orienteering Championships 2003 in Pezinok, Junior World Ski Orienteering Championships 2000 in Banská Bystrica, Junior World Ski Orienteering Championships 1996 in Banská Bystrica and World Mountain Bike Orienteering Championships 2005 in Banská Bystrica. The European Youth Orienteering Championships in 2017 were also held in Banská Bystrica. You can meet some people from these events in year 2018 too.

Trail Orienteering is a relatively new discipline in Slovakia, but has quickly acquired importance similar to other orienteering disciplines. The first competition on Slovak territory took place during the Slovak championships in Sprint (organized by our club) on 13 September 2008 and it was prepared by the Hungarian federation. We had to wait a long time for the next TrailO competition. The first competition organised by a Slovak club on Slovak territory was a local competition with 47 participants, organised by our club on 25 January 2014. We started a very close cooperation with the Czech federation and our skills and experience grew widely. The club TJ Slávia Farmaceut Bratislava has organised 9 national TrailO competitions (7 with international participants) and two ECTO competitions in Slovakia during the last three years. We organised three TrailO competitions in the Czech Republic last year too.

Our goal is to prepare a fair and nice competition with the possibility to explore beautiful and interesting places in Slovakia. I would like to apologise for the fact that you may face slightly higher requirements for travelling, but each competition will be held in a different type of terrain with great demands on TrailO skills. You will meet flat land, hilly and steep slopes, and different vegetation, mostly in non-urban areas. We will pay special attention to Paralympic competitors by selecting asphalt or another firm surface on the majority of competitions and paths.

The European Trail Orienteering Championships 2018 will be held in the beautiful capital of Slovakia, a small town named Bratislava, and its neighbourhood. Bratislava is famous for unique architecture, culture, history tradition, art, drinks, food and nightlife.

I wish all of you a lot of success and good preparations for our event in year 2018. I assure you that we will prepare this event on the highest possible level.

Dušan Furucz

Venue



The European Trail Orienteering Championships 2018 will be held in Bratislava, the capital of Slovakia, and its neighbouring areas - the Záhorie lowlands and the Little Carpathian mountains.

The lowland Záhorie is a very flat region in western Slovakia between the Little Carpathians mountains to the east and the river Morava to the west. This area is well known for its sandy dunes covered by pine forest, and large military training areas.

The Little Carpathians are a relative low and narrow mountain range with very diverse relief. They are part of the Carpathian Mountains. The mountains begin in Bratislava and continue about 100 km to the north. This territory is largely covered by deciduous forests with beech, common ash, sycamore, maple and linden.

Bratislava is the political, cultural and economic centre of Slovakia with a population of about 450,000 inhabitants and located in south-western Slovakia, at the junction of the rivers Danube and Morava. Bratislava is very close to two other countries, Austria and Hungary. Bratislava is historically tied with these countries and during a long history it was a significant economic, cultural and political centre of Central Europe. You can find a lot of unique architecture, culture, history, tradition, art, drinks, food and nightlife in this "small" city.

The individual races will be held in different municipalities. Borský Mikuláš, Devín (Bratislava), Plavecký Mikuláš and Stupava are small villages but with very beautiful and diverse nature. You can see the very flat forests change to rugged terrain forms or extremely steep slopes.

<http://www.visitbratislava.com>

<http://www.slovakiatouring.com>

Organising team

The event will be organised by members of the orienteering club "TJ Slávia Farmaceut Bratislava", with the support of the Slovak Orienteering Association. Main officers are:

Dušan FURUCZ	Event Director, Mapper
Ján FURUCZ	Course Setter
Ján MIŽŮR	Finances
Robert MIČEK	Mapper
Silvia SHAHZAD	Technical consultant for Paralympics, Accommodation
Jakub VALACH	Design
Ladislav KASZA	IT & Equipment
Petra KOTULIAKOVÁ	PR & Media
Ivan KOTULIAK	Logistics
Zuzana JANOTOVÁ	Catering, Protocol, Secretary
Zuzana FURUCZOVÁ	Office
Marcel FURUCZ	Human Resources and volunteers
Hana ŠMELÍKOVÁ	Start and Finish Area Manager
Ari TERTSUNEN (FIN)	IOF Senior Event Adviser
Marián MIKLUŠ	National Controller

Competition rules

The Competition Rules for IOF Trail Orienteering Events (valid from 1 January 2017) and the ETOC Rules (valid from 1 January 2016) shall apply to the European Trail Orienteering Championships 2018. A copy of the Rules is available for download from the Rules section on the official IOF website (www.orienteering.org).

There are no deviations from the Competition Rules.

Training possibilities

On request, the ETOC organisers can provide maps and opportunities for team preparation for the ETOC 2018 on similar or almost similar terrain.

More information about training possibilities will be published on the official ETOC website.

Event programme

Date	Time	Event	Location
Thursday, April 26	16:00	Event Office opens, arrivals	Bratislava
Friday, April 27	11:00	Model Events PreO	Plavecký Mikuláš
	12:00	Model Events TempO	Lakšárska Nová Ves
	12:00	PreO competition entry deadline	Bratislava
	19:00	Team Officials Meeting	Bratislava
Saturday, April 28	10:00	PreO – Day 1	Stupava
	16:00	PreO - Public competition	Stupava
Sunday, April 29	10:00	PreO – Day 2	Plavecký Mikuláš
	16:00	PreO - Public competition	Plavecký Mikuláš
	16:30	Awards Ceremony	Plavecký Mikuláš
	18:00	Relay competition entry deadline	Bratislava
	19:00	Team Officials Meeting	Bratislava
Monday, April 30	10:00	Relay	Devín (Bratislava)
	12:00	TempO competition entry deadline	Devín (Bratislava)
	14:00	Relay course open for public	Devín (Bratislava)
	15:00	Opening Ceremony	Devín (Bratislava)
	15:30	Awards Ceremony	Devín (Bratislava)
	19:00	Team Officials Meeting	Bratislava
Tuesday, May 1 (National Holiday)	9:00	TempO – Qualification	Borský Mikuláš
	14:00	TempO – Final	Borský Mikuláš
	16:00	Awards Ceremony	Borský Mikuláš
	20:00	Closing Ceremony & Banquet	Bratislava
Wednesday, May 2		Departures	Bratislava

Entries

Final entries and payment of the entry fees must be made by March 19, 2018.

Entries will not be valid until the entry fee has been paid. All entries have to be made through IOF Eventor.

<https://eventor.orienteering.org/Events/Show/5539>

Competitors for the Paralympic class shall submit to the IOF, at least eight weeks before the competition, an eligibility form (available at www.orienteering.org) completed by a doctor. When approved, a certificate authenticating their Paralympic status will be issued. The eligibility certificate must be sent to the event organiser with the final entry form.

Confirmation of eligibility for Paralympic participants must be sent to the organisers by March 19, 2018.

Accreditation and entry fees

Accreditation fee for Athletes	80 €
Accreditation fee for Team Officials	100 €
Accreditation fee for Accompanying Persons	50 €
Entry fee for PreO	100 €
Entry fee for TempO	70 €
Entry fee for Relay	150 €

Account name: TJ Slávia Farmaceut
Bank: Slovenska Sporitelna
IBAN: SK2709000000005110562760
BIC: GIBASKBX

Final entries and payment of the entry fees must be made by March 19, 2018.

Escorts

The organisers will provide escorts ('pushers') on request during all competitions.

Final request for an Escort must be made by March 19, 2018.

List of entries

	Federation	Open	Paralympic	Official	Accompanying
	Croatia	6			
	Czech Republic	8	6		
	Denmark	4	1		1
	Finland	10	3	1	3
	Germany	3			
	Great Britain	6	2		1
	Hungary	3	1		1
	Italy	7	4		1
	Japan	6			
	Latvia	6	4	2	
	Lithuania	6	3		
	Norway	6	4		
	Poland	6	6		
	Portugal	3	1		
	Russian Federation	6	6		
	Slovakia	8	1		
	Slovenia	3			
	Spain	3	3		
	Sweden	8	4	1	
	Total	114	52	4	7

Participation

Competitors representing member Federations of the IOF, defined by the International Paralympic Committee as belonging to the European continent, can compete in ETOC.

Competitors representing other member Federations of the IOF can participate in ETOC but will not be eligible for European titles, medals or diplomas.

In the individual PreO event a Federation may enter a maximum of 6 persons in each class. In the TempO event a Federation may enter a maximum of 8 persons. The current European Champion may be entered in their respective classes in addition to the normal maximum.

In the TrailO Relay a Federation may enter 2 teams in each class each consisting of 3 competitors. Only the better-placed team will count in the prize list.

Catering

Warm meals will be provided for lunch in competition arenas (except model day) on request. The price is 7-8€ per day and meal, or 30€ per whole package.

Final order and payment for the catering must be made by March 19, 2018.

Transport

Teams, VIPs and the media representatives are free to use their own transport to all the events. There will be reserved parking areas at all the arenas.

Organised transport will not be provided, as there have been no requests for transport. We can help individually with special requests.

VISAS

According to the current regulations, citizens of some countries must obtain a visa in order to enter Slovakia.

Please check the following website for more information:

https://www.mzv.sk/web/en/consular_info/visa

Request for visas should be submitted at your nearest Slovakian Embassy. Please note that conditions of entry to Slovakia can change, and all ETOC participants are advised to keep up to date with the current situation by consulting their local Slovakia Embassy.

Event Centre

Vienna House Easy Bratislava
Galvaniho 28
82104 Bratislava
Slovakia

Facilities for disabled guests. The entrance hall, special bedrooms, sanitary facilities and public rooms are accessible for wheelchairs. Re-charging of electric wheelchairs will be possible in special rooms.

Accommodation

Official accommodation with special ETOC prices will be located along with the Event Centre in

Vienna House Easy Bratislava
Galvaniho 28
82104 Bratislava
Slovakia

Next to the Avion Shopping Park, Slovakia's largest shopping mall, and an IKEA store, Hotel Vienna House Easy Bratislava is only a 5-minute drive from Bratislava Airport and a 15-minute drive from the city centre.

There are four special double rooms for disabled, which can be extended to the next four rooms by connecting these rooms together.

Prices: single room 35€ per night / double room 50€ per night

Free private parking is possible on site.

Languages spoken: Slovak and English

Website: <https://www.viennahouse.com/en/easy-bratislava/the-hotel/overview.html>

Location: <https://www.viennahouse.com/en/easy-bratislava/location.html>

Contact person: ZUZANA BEZDEKOVA (Revenue Manager / Sales Executive Corporate)

Email: zuzana.bezdekova@viennahouse.com

Phone: +421 2 322 99 522

Reservations for the accommodation should be made directly by e-mail:

zuzana.bezdekova@viennahouse.com .

Final bookings and payments for the accommodation have to be made according to the business terms and conditions of the chosen accommodation.

Climate

The climate in Bratislava is continental. The usual day temperature at the end of April is between 10 and 15 degrees Celsius. The weather and climate in the spring can be very variable.

For a precise weather forecast during ETOC, check out the [Slovak Hydrometeorology Institute](#).

Hazards

There is no known occurrence of dangerous animals. You can occasionally see typical fauna for this area (rabbits, roe deer, deer and wild boar).

Although there is only a low probability of trouble from insects in the spring season, we recommend protection against insect bites (mosquitoes, ticks).

There are rare occurrences of dangerous plants. As long as you do not pick up any dangerous mushrooms or plants like [fly agaric](#) or [death cap](#), the only potential hazard is an unpleasant sting from a [stinging nettle](#) when you step off the paths in some areas.

Preliminary information about Courses

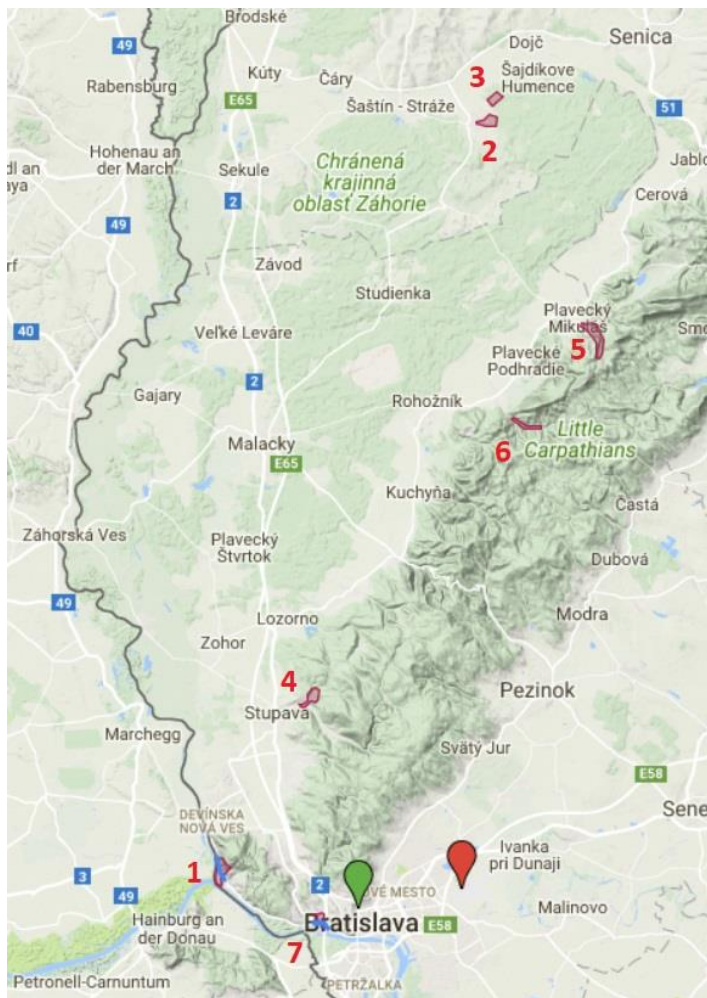
Event	Length	Control points	TCs	Accessibility	Climbing
PreO Day 1	0.9 km	24	2 x 3	very good forest paths*	moderate
PreO Day 2	1.7 km	28	2 x 3	asphalt road	increased
Relay	0.8 km	3 x 11	2 x 4	paved or asphalt paths	moderate
TempO Qualification	1.2 km		6 x 5	forest or forest path with sand surface*	minimal
TempO Final	0.9 km		7 x 5	forest or forest path with sand surface*	minimal

* The critical parts will be covered by carpets or linoleum

Public competition

Open Public events will be held during ETOC on the same or similar courses, on the same days, after ETOC competition. The whole event includes two PreO competitions (ETOC Day 1 + Day 2) and two individual trainings on ETOC courses (Relay and TempO). You can find more information on [ETOC pages](#).

Embargoed areas



1. Devín
2. Borský Mikuláš
3. Borský Mikuláš II
4. Stupava
5. Kršlenica (Plavecký Mikuláš)
6. Sološnica – reserve terrain
7. Rovnice (Bratislava) – reserve terrain

Railway station

Airport

All embargoed areas are out of bounds for all potential ETOC 2018 team members (competitors, officials, escorts, etc.) and any other person who may influence the results of the competitions by any knowledge of the terrain.

You can find more information about [embargoed areas](#) on the official website.

Zero tolerance

Our goal is to prepare a fair and nice competition, so we would like to avoid any confusion about the correct placement of control flags. Our main concept is: "Competitors have to find the solution only by reading the map, bringing TrailO closer to real orienteering".

"Zero answers" general specification

The answer for any PreO or TempO task is "zero" if none of flags is in position which is precisely defined by centre of circle and the control description (= the correct position).

"Zero tolerance" specification at ETOC 2018

The distance between the correct position and the closest flag is always 5 or more meters. More details about Zero tolerance will be published in Bulletin 4.

Terrain and maps:

TempO model - Lakšárska Nová Ves (48.588879, 17.175586)

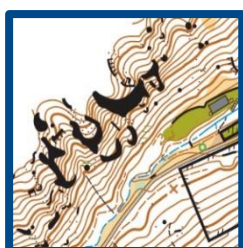


Map: Za dedinou, 1:4 000, e=2.5 m, ISSOM
Description: A typical flat terrain for lowland Záhorie – pine forest with sand dunes. A forest path with mostly firm surface but in some places with sand surface. 200 – 250 m above sea level.

Activities: Last FootO competition in year 2010. Never used for TrailO
Old map: Pri čiernom piesku III <http://www.orienteering.sk/maps-new/jpg-gif/966.jpg>

Event Centre: Lakšárska Nová Ves municipal office (48.578685, 17.183530)

PreO and Relay model – Plavecký Mikuláš (48.503920, 17.319361)



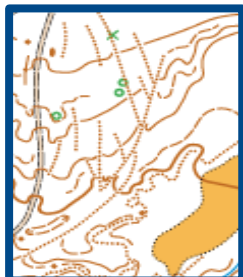
Map: Kršlenica, 1:4 000, e=2.5 m, ISSOM
Description: A typical karst valley with karst surface and high steep slopes. Territory largely covered by deciduous forest with beech, ash, maple and linden. 300 – 500 m above sea level.

Activities: Never used for orienteering.

Old map: None

Event Centre: Plavecký Mikuláš municipal office (48.508678, 17.304517)

PreO Day 1 – Stupava (48.284018, 17.063934)



Map: Boleška, 1:4 000, e=2.5 m, ISSOM
Description: A typical Little Carpathians hilly terrain covered by deciduous forests and parks with varied vegetation - mostly maintained grass areas and deciduous forest. 180 – 280 m above sea level.

Activities: Last FootO competition in year 1990 (2000). Never used for TrailO.

Old map: Greenpeace <http://www.orienteering.sk/maps-new/jpg-gif/73.jpg>

Event Centre: Stupava pension Intenzíva (48.279748, 17.048953)

PreO Day 2 – Plavecký Mikuláš (48.500573, 17.324855)



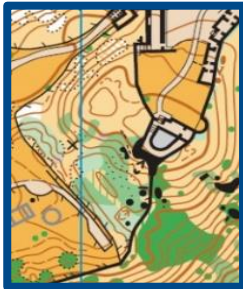
Map: Mokrú dolina, 1:4 000, e=2.5 m, ISSOM
Description: A typical karst valley with karst surface and high steep slopes. Territory largely covered by deciduous forest with beech, ash, maple and linden. 300 – 500 m above sea level.

Activities: Never used for orienteering.

Old map: None

Event Centre: Plavecký Mikuláš community centre (48.508785, 17.305434)

Relay – Devín (48.173663, 16.978794)



Map: Devínská hradná skala, 1:4 000, e=2.5 m, ISSOM
Description: Ancient ruins of castle Devín, located on a spectacular rocky cliff with archaeological excavations revealing marked ground plans of buildings, plus grassy hilly areas. 150 – 200 m above sea level.
Activities: Last FootO competition in year 2015. Never used for TrailO.
Old map: DEVÍN MMXV <http://www.orienteering.sk/maps-new/jpg-gif/1390.jpg>
Event Centre: Devín hotel Hradná Brána (48.175124, 16.979127)

TempO Qualification – Borský Mikuláš (48.6414317, 17.2275847)



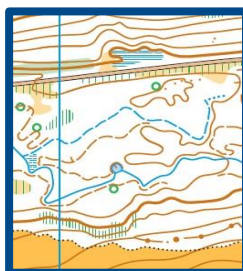
Map: Pri struhe, 1:4 000, e=2.5 m, ISSOM
Description: A typical flat terrain for lowland Záhorie – pine forest with sand dunes. A forest path with mostly firm surface but in some places with sand surface. 200 – 250 m above sea level.
Activities: Last FootO competition in year 2012. Never used for TrailO.
Old map: Tréning CESOM 2012 <http://www.orienteering.sk/maps-new/jpg-gif/1104.jpg>
Event Centre: Borský Mikuláš community centre (48.627956, 17.212832)

TempO Final – Borský Mikuláš (48.628111, 17.223697)



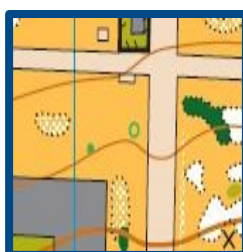
Map: Na humnisku, 1:4 000, e=2.5 m, ISSOM
Description: A typical flat terrain for lowland Záhorie – pine forest with sand dunes. A forest path with mostly firm surface but in some places with sand surface. 200 – 250 m above sea level.
Activities: Last FootO competition in year 2016. Last TrailO competition in year 2015.
Old map: Borský Mikuláš <http://www.orienteering.sk/maps-new/jpg-gif/1034.jpg>
Event Centre: Borský Mikuláš community centre (48.627956, 17.212832)

Reserve terrain – Sološnica (48.448669, 17.250037)



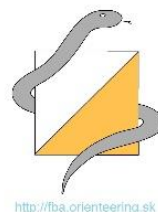
Map: Sološnická dolina, 1:4 000, e=2.5 m, ISSOM
Description: A typical Little Carpathians valley. Territory largely covered by deciduous forest with beech, ash, maple and linden. 300 – 500 m above sea level.
Activities: Never used for orienteering.
Old map: None
Event Centre: N/A

Reserve terrain – Bratislava (48.148713, 17.07257)



Map: TBD, 1:4 000, e=2.5 m, ISSOM
Description: University campus with varied vegetation - mostly maintained grass areas and deciduous forest, plus a botanical garden. 130 – 200 m above sea level.
Activities: Last FootO competition in year 2014. Last TrailO competition in year 2014.
Old map: MALÉ ROVNICE <http://www.orienteering.sk/maps-new/jpg-gif/1238.jpg>
Event Centre: N/A

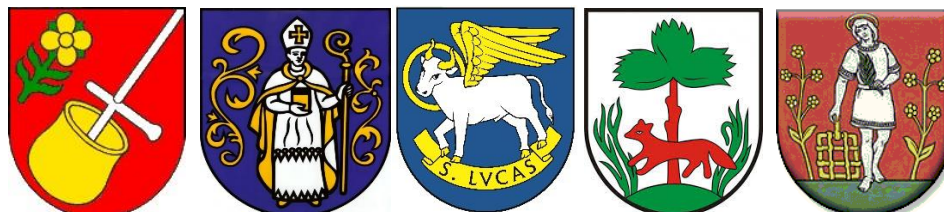
Organisers



Sponsors



Partners



TJ Slávia Farmaceut
ul. Odbojárov 10
832 32 Bratislava
Slovak republic



ETOC

2018

SLOVAKIA