

## Bulletin 1

# International orienteering competition and world ranking event (WRE) Ankkurirastit in Salo, Finland, April 15<sup>th</sup> 2018

### Event organizer

Orienteering club Angelniemen Ankkuri

### Main officials

Event director: Jarmo Reiman, jarmo.reiman(at)hotmail.com, +358403556221

Course setter: Lasse Vuorinen, lassevuorinen1(at)hotmail.com, +358407618245

English-speaking contact person: Hannu Pyy, pyy.hannu(at)gmail.com, +358405072071

Course controller: Markku Sipponen, markku.sipponen52(at)gmail.com, +358442380851

IOF:s event adviser: Jouni Lipponen, jouni.lipponen(at)gmail.com, +358405410785

### Event information

#### Rules

The rules of Finnish Orienteering Federation and International Orienteering Federation will be applied in the competition. The rules of the Finnish Orienteering Federation are available on the website [www.suunnistusliitto.fi](http://www.suunnistusliitto.fi)

Classes M21E and W21E have WRE status. Participants in classes M/W21E will be selected according to world ranking list and to the Finnish Orienteering Federations special instructions for a Finnish national team selection race. **Middle** distance in WRE classes, **long** distance in other classes. Estimated winning times 35 min in M21E and W21E.

#### Punching system

Emit punching.

#### Entries and entry fees

Entries and payments should be made primarily through IRMA service or alternatively via Eventor (those who don't have access to IRMA service). All WRE competitors make an entry to classes M/W21 E. Entry fee in WRE classes is 38 €.

Emit card number must be included in the entry. The need for a rental Emit must be indicated in the entry. If Emit card number is missing, the organizer will reserve an Emit card and charge 4 €.

The IOF World Ranking system only uses the Latin alphabet from A to Z. It is very important for all runners to check that the information about them is correct. Please check the following: the spelling of your first and last name, year of birth and nationality. If you find any mistakes, please report them via email [changes.athletedata\(at\)orienteering.org](mailto:changes.athletedata@orienteering.org). When reporting, make sure you add your complete birth date (day, month, year)

It is not possible to pay through Eventor. The bank details for entry fee payment without access to IRMA are as follows:

Account owner: Angelniemen Ankkuri ry.

Bank name: Lounaismaan Osuuspankki

Bank address: Turuntie 7, 24100 Salo, Finland

IBAN: FI07 5410 5010 0010 08

BIC: OKOYFIHH

Entries and payments have to be made no later than Friday, April 6 th, 2018 at 23:59. No late entries allowed.

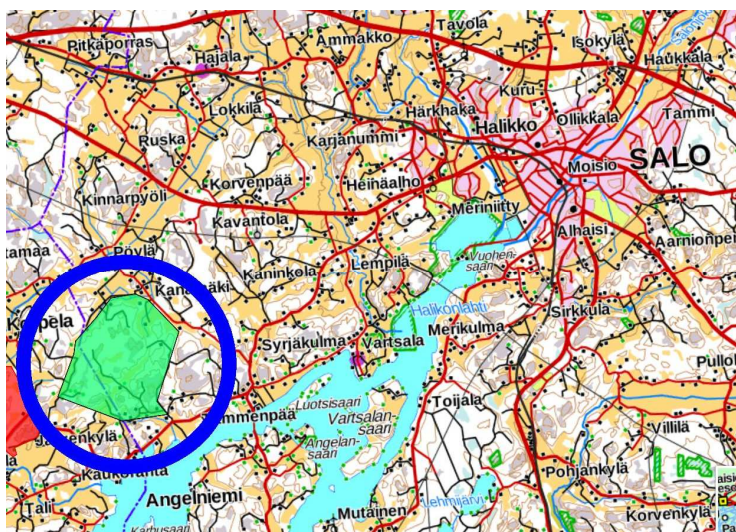
## IOF ID

WRE athletes have to include their IOF IDs in their entry. Athletes who don't have yet an IOF ID will get one by registering a user account in IOF Eventor:

<https://eventor.orienteering.org/Register>

## Embargoed area

Competitors are not allowed to train or enter the embargoed area before competition. See the map below:



## Competition map

Scale 1:10 000, contour interval 5 m. 6-colour no-offset printing in 4/2018. Map size A4.

## Terrain

The competition terrain is typical southwestern terrain with bare rock hills and coniferous forests of varied ages and clearcut areas between hills. Some forest roads also exist on the competition terrain. Terrain was partly used in Nordic Orienteering Championships 2009.

## Timetable of the competition

The first start of the competition is at 11:00 am. A quarantine zone for all M/W 21E classes on the way to start area at 1 km distance from competition centre.

## Training opportunities

There is a small warm-up terrain and map with some controls available near the quarantine zone.

## Services in the competition centre

There will be warm food, sandwiches, sausages and hot and cold drinks at a moderate cost available at the venue. There will be also warm outdoor shower available at the competition centre.

## Guiding and venue

Guiding to the competition centre starts from crossing of roads 110 and 1835. Driving time from the start of the guiding is 15 minutes. The guiding signs are on their places by Sunday 15.4.2018 at 8:30. Parking roadside 200 – 2000 m from competition centre, no parking costs.

## Accommodation and travelling to Salo

Salu is located between Turku (52 km) and Helsinki (115 km). There is no public transport from city of Salu to the competition centre. You can look for suitable accommodation in Salu area on this website: <http://www.saloon.fi/en/>

## Weather and clothing

In April the weather in south-western Finland can be anything from sunny and warm up to +20 degrees to very cold and rainy (even down to 0 C).

## Visa requirements

According to current regulations, citizens of some countries must obtain a visa in order to enter Finland. Please check the following website for more information: <http://www.formin.fi>. Visas should be applied for at your closest Finnish Embassy. Please note that conditions of entry may change and all participants are advised to keep themselves updated on the current situation by consulting their local Finnish Embassy.

## Final event instructions and start times

There will be more information on the organizer's web page: <http://www.angelniemenankkuri.com> closer to the date of the competition. Bulletin 2 will be published in the end of March.

You are warmly welcome to Ankkurirastit!