



EGK OL-Weltcupfinal 2017

GRINDELWALD 29.9.-1.10.2017



Bulletin 3



Presenting Partner



Main Sponsors



Co-Sponsors



Host Region



on behalf of



WELCOME TO GRINDELWALD

Dear athletes, ladies and gentlemen

Grindelwald and the organizing team are looking forward to the Orienteering World Cup Final 2017 and to seeing you all in the wonderful surroundings of the worlds famous Eigernordwand and Grindelwald! The region has hosted several big orienteering competitions, e.g. a stage of Swiss 5-days in 1980 and the Swiss Long distance Championships in 1998. All three competition areas were never mapped before, so we offer you a real challenge in unknown terrain.

We hope to welcome many runners from countries all over the world in the Swiss mountains!

The last years, Brigitte Grüniger Huber was the event director and she did an incredible and very successful job. Thank you, Brigitte!
It is a great honour for me, but also a pressure to take over this event from her. I'm looking forward and hope to master the challenge.

You are warmly welcome to Switzerland!

Matthias Niggli
Event Director EGK OL-Weltcupfinal

1. ORGANISATION

Organising Committee

Matthias Niggli	Event Director
Simone Niggli	Technical Director
Martin Oppliger	Start
Markus Hitz	Finish, Arena, Infrastructure
Daniel Leibundgut	Results, IT Services
A.Wenger/L.Schubnell	Live-Productio
Doris Grüniger	Event Office
Christoph Aeschlimann	VIP
Severin Furter	Media
M.Schenker/M.Probst	National competitions

Event Advisors

Eike Bruns	IOF Senior Event Advisor, GER
Ulu Aeschlimann	National Event Advisor, SUI
Jost Hammer	National Event Advisor, SUI

2. EVENT CENTRE

The Event Centre is located at the Sport Centre of Grindelwald. 46°37'24.5"N 8°02'07.6"E. Contact person: Matthias Niggli (+41 79 222 13 87).

Arriving by car: from Interlaken follow the signs Grindelwald. In Grindelwald use the parking house "Eiger" which is under the building of the Event Centre.

Arriving by train:

From the train station Grindelwald follow the main road for about 100m and then turn right to the Sport and Tourism Centre of Grindelwald.

The Team Officials' Meeting will be held in the Sport Centre.

Please note that it will be very difficult to travel home on Sunday evening as the competition is hold in the afternoon. So we booked all accommodations until Monday to have a nice party on Sunday evening. Take your time to stay one more night in the Swiss mountains, you will not regret it.

3. PROGRAMME

Wednesday, 27 September 2017

Arrival of the teams	
Event Centre opens	13:30-17:00
Free training	14:00-18:00

Thursday, 28 September 2017

Event Centre opens	09:00-12:00
Free training	10:00-18:00
Competition entry deadline	12:00
Entry deadline Long	12:00
Event Centre opens	16:00-18:30
Team Officials' Meeting Long and Middle	17:30-18:00

Friday, 29 September 2017

EGK OL-Weltcupfinal Long	10:30-17:30
First start approx.	10:30
Last start	15:30
Price giving ceremony	17:15
Entry deadline Middle	17:30

Saturday, 30 September 2017

National public race	10:00-16:00
EGK OL-Weltcupfinal Middle	10:00-16:00
First start Women approx.	10:00
First start Men approx.	12:30
Last Start Women	13:25
Last start Men	15:00
Price giving ceremony	16:00
Entry Deadline Sprint Relay	16:30
Team Officials' Meeting Sprint Relay	17:30-18:00

Sunday, 1 October 2017

National public race	10:00-14:00
EGK OL-Weltcupfinal Sprint Relay	14:00-16:00
Start sprint relay	14:25
Price giving ceremony	15:45
World Cup party	20:00-

4. COMPETITIONS

4.1 EGK OL-Weltcupfinal Long

Format	Long distance, individual start, 3 min. start interval
Map	Grindelwald Nodhalten, 1:15'000, 5m, by Urs Steiner
Terrain	Orienteering terrain between 1300 and 1900m above sea level. Mixture of coniferous forest and semi-open to open alpine pasture. Some forest roads and hiking trails, rich in contour and rock details.
Forms	Mountainside with moderate to steeper slopes.
Vegetation	Alpine forest with coniferous forest. No or moderate ground vegetation, partly semi-open and open terrain, alpine pasture.
Runability	Mostly good, some blueberries and alpine roses. Occasionally rocky ground.
Visibility	Good.

4.2 EGK OL-Weltcupfinal Middle

Format	Middle distance, individual start, 2 min. start interval
Map	Grindelwald Dirrenberg, 1:10'000, 5m, by Urs Steiner
Terrain	Orienteering terrain between 1000 and 1400m above sea level. Coniferous forest with small semi-open to open alpine pasture. Some forest roads and hiking trails, rich in contour and rock details. Short urban area near the finish.
Forms	Mountainside with moderate to steeper slopes.
Vegetation	Alpine forest with coniferous forest. No or moderate ground vegetation, partly semi-open and open terrain, alpine pasture.
Runability	Good, occasionally rocky ground.
Visibility	Good.

4.3 EGK OL-Weltcupfinal Sprint Relay

Format	Sprint relay according to IOF-rules.
Map	Grindelwald, 1:4'000, 2m, by Beat Imhof
Terrain	Urban terrain in a touristic village with side streets and narrow footpaths. Some passages on lawns.
Forms	Mostly slopes with varying steepness.
Traffic	Local traffic in some of the streets.

5. COURSES (PRELIMINARY)

EGK OL-Weltcupfinal Long

Women	9.2km/410m climb, winning time 70', 2 refreshment controls
Men	11.5km/760m climb, winning time 85', 3 refreshment controls

Course setters: Bruno Haldemann and Urs Steiner

EGK OL-Weltcupfinal Middle

Women	4.6km/225m climb, winning time 35', 1 refreshment control
Men	5.5km/275m climb, winning time 35', 1 refreshment control

Course setters: Bruno Haldemann and Urs Steiner

EGK OL-Weltcupfinal Sprint relay

Leg 1/4	3.2km/90m climb
Leg 2/3	3.5km/100m climb winning time per leg 13-15'

Course setters: Irene and Michael Eglin, Valerie Suter

6. TRAINING

Middle/Long: Training map with controls near hotel Wetterhorn, just east of Grindelwald, 1:10'000 and 1:15'000, 2017 by Urs Steiner.

Sprint relay: Training map in a part of the village of Grindelwald, 1:4'000, 2017 by Beat Imhof.
No controls.

Maps will be given to all entered runners and coaches at the Event Centre.

7. EMBARGOED AREAS

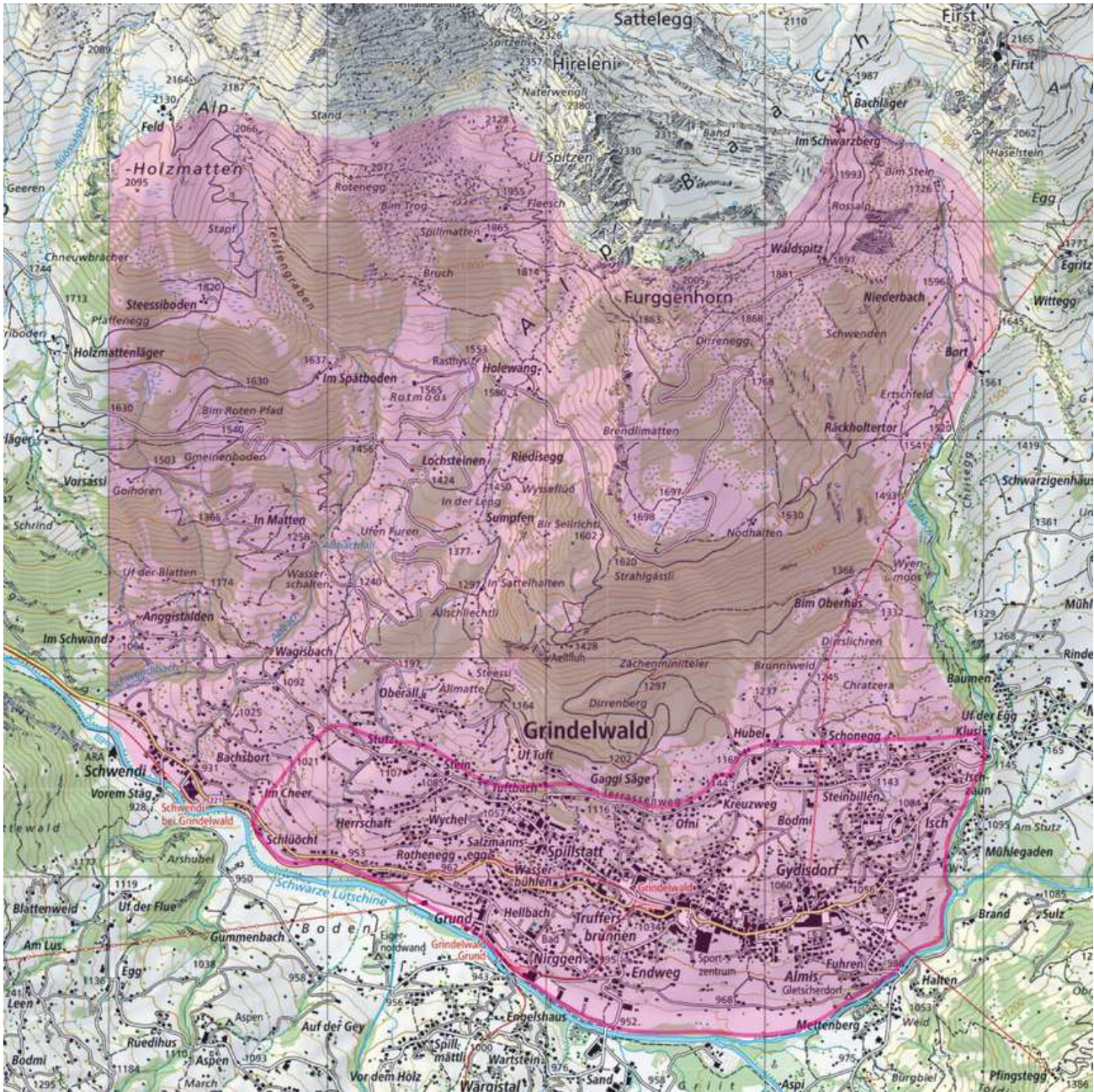
The marked competition areas around Grindelwald are embargoed areas. For competitors, team officials and others who, through knowledge of the terrain or the competitions, may influence the results of the competitions, it is prohibited to enter the embargoed areas.

Special rule for the stay in Grindelwald (village, specially marked on the map) during the following periods:

Saturday, 23 September 2017 – Sunday, 1 October 2017

- It is allowed to stay as a tourist, e.g. for sight-seeing, visiting a restaurant, shopping in the village of Grindelwald.
- It is prohibited to stay there with a map, to run, to jog, to orienteer through the embargoed area or to test route choices.

These embargoed areas are valid until the day prior to the competition. Special rules by the organizer will be valid at the day of competitions (see Bulletin 4).



8. COMPETITION RULES

The Competition Rules for IOF Foot Orienteering Events 2017, valid from 1 January 2017 apply. Participation restrictions, classes and qualification system will follow the Special Rules for the 2017 World Cup in Orienteering and the Special Rules for the 2017 Relay World Cup in Orienteering.

New ISOM 2017 will be used for the forest maps.

9. PUNCHING SYSTEM AND GPS-TRACKING

The punching system used is SPORTident Air+. SIAC-Cards will be provided by the organizer. GPS-Tracking will be used in all races.

10. ACCOMMODATION

Teams must book their own accommodation. You may choose an accommodation on www.grindelwald.ch.

11. TRANSPORT

Once in Grindelwald, the transports to quarantine, pre-start and finish areas will be made by foot, official busses or cable cars. The time table will be defined in Bulletin 4. There are no parking possibilities at quarantine, pre-start and finish areas for the teams.

Grindelwald can easily be reached by train, time tables can be found on www.sbb.ch.

12. ENTRY

12.1 Entry deadlines

Team size deadline:

The following information shall be sent to the organiser:

- Number of competitors (men and women)
- Number of team officials (men and women)
- Number of teams or single runners for the Sprint-Relay
- Number of beds in accommodation
- Team manager: Name, address, phone, fax, e-mail

Please use the online entry system Eventor:

<https://eventor.orienteering.org/Events/Show/5393>

Team size deadline: **31 July 2017**

Team names deadline:

The name entry has then to be done no later than 19 September 2017 by fill in the forms in the online entry system Eventor with the following information:

- All competitors and team officials: family name, first name, nation, sex, year of birth, IOF ranking ID,
- IOF officials: family name, first name, address, IOF function.

Note, that name entries can only be accepted if a team size entry was done by the national federation by 31 July! Please use the online entry system Eventor (link on our website, available from March 2017).

Team names deadline: **19 September 2017**

12.2 Entry fees until 31 July 2017

Competition package:

CHF 100.- for competitors and CHF 50.- for team officials

This includes:

- Starting fee for all 3 races (competitors only)
- Training maps, competition maps

12.3 Payment

The competition package must be paid by 31 July 2017.

Please note that all bank charges must be paid by the applicant.

Please note, that we will add a late payment fee of CHF 20.- per person for late payment!

Bank	PostFinance, Nordring 8 CH-3003 Bern,
Account Nr.	87-717328-8
IBAN	CH75 0900 0000 8771 7328 8
SWIFT Code	POFICHBEXXX
Clearing Nr.	09000
To the credit of	Swiss Cup, CH-8712 Stäfa

13. ENTRIES (19.07.2017)

	Federation	Men	Women	Officials	Team
	Austria	6	4	3	13
	Canada	1	1		2
	Denmark	6	6	3	15
	Finland	8	8	3	19
	France	8	6	2	16
	Germany	6	6	2	14
	Great Britain	6	6	1	13
	Hungary	4	4	1	9
	Italy	6	6	1	13
	Japan	3	3	1	7
	Latvia	3	2	1	6
	Lithuania		5		5
	New Zealand	1	2		3
	Russia	6	8		14
	South Africa	2			2
	Sweden	9	9	4	22
	Switzerland	9	9	4	22
	Sum	81	82	25	195

14. PRIZE MONEY

A total prize fund of CHF 11'750.- will be awarded from the event organiser to the best men and women in both individual competitions and to the best teams in Grindelwald:

EGK OL-Weltcupfinal Event 9 and 10:

1 st place:	CHF 1'000.-	4 th place:	CHF 200.-
2 nd place:	CHF 700.-	5 th place:	CHF 150.-
3 rd place:	CHF 350.-	6 th place:	CHF 100.-

EGK OL-Weltcupfinal Sprint Relay:

1 st place (per team):	CHF 1'000.-
2 nd place (per team):	CHF 500.-
3 rd place (per team):	CHF 250.-

A total prize fund of EUR 7'000.- will be awarded from the IOF to the best men and women in the World Cup overall ranking 2017:

IOF World Cup overall ranking 2017:

1 st place:	EUR 2'000.-
2 nd place:	EUR 1'000.-
3 rd place:	EUR 500.-

15. CLOTHING

According to the Swiss Orienteering Competition Rule (WO Art. 54,2;c) it is forbidden to run with spike shoes in Switzerland. However, dobb spikes and normal orienteering shoes are allowed.

In the Sprint Relay dobb spike shoes are prohibited as well. Otherwise, there are no regulations on clothing, but it is recommended to cover arms and legs to avoid tick bites. Ticks might transmit Boreliosis and Meningo-Encephalitis.

16. ANTI-DOPING

Doping is forbidden. "Think positive – test negative"! IOF Anti-Doping Rules apply, valid as of January 1, 2015. The Swiss Orienteering Anti-Doping Rules are harmonised with the Anti-Doping Rules and procedures of the Swiss Olympic Association and apply as well.

Athletes who are selected for the doping tests must bring an official identification (with photo) to the doping test area. The athlete should also bring along their therapeutic use exemption (TUE) if applicable. In general, it is advisable that the athletes bring along their ID to all the competitions and events.

For more information, please consult:
<http://orienteering.org/anti-doping/>

Both, the IOF and/or the Swiss Olympic Association can order doping tests at any time during the stay of the participants of World Cup Final 2017 in Switzerland. By their signature given at the event registration upon arrival, the athletes and coaches will accept that they are subject to sanctions in the event of any doping offence. The teamleader will have to sign for the whole team.

17. WEATHER&CLIMATE

Average temperatures in Grindelwald at the end of September can be everything between 0°C and 20° C in daytime. Please be aware and bring enough clothes for competing on an altitude from 1000 to 1900 meters above sea level.

18. VISA PERMITS

The prerequisite for immigration into Switzerland is a valid passport. For travellers from certain countries a visa or further documents are required. Please check with your embassy if you need visa permits. <https://www.bfm.admin.ch/bfm/en/home/themen/einreise.html>.

19. INSURANCE

The organisers decline any liability that might occur through participation in IOF World Cup Events 9 and 10, Sprint Relay and trainings. Each person participates at their own risk and is responsible for their own insurance coverage (illness and accident).

20. MEDIA SERVICES

We welcome all media representatives as our partners to broadcast the thrilling events of World Cup Final 2017 to a broad public.

For media accreditation please contact Severin Furter:
Mobile +41 79 602 99 72
media@ol-weltcup.ch

21. TV / LIVE RESULTS

Middle and Sprint Relay will be broadcasted live in Swiss national TV (SRF).

All races can also be followed live on the internet worldwide. The link to live Internet-TV, GPS tracking and results can be found at www.ol-weltcup.ch on the competition days and is free of charge.

22. INFORMATION

EGK OL-Weltcupfinal 2017
Matthias Niggli
Luchliweg 5A
CH-3110 Münsingen
Tel +41 31 721 52 68
Mobile +41 79 222 13 87
matthias.niggli@ol-weltcup.ch
www.ol-weltcup.ch

Bulletin 4 will be published by 27 September 2017. Final details will be released in Bulletin 4 upon arrival at the Event Centre in Grindelwald and on the homepage on 27 September 2017.

See you soon!

© Pictures by Jungfrau Region/David Birri

Presenting Partner



Main Sponsors



Co-Sponsors



Host Region



on behalf of



Mein Gesundheits- vorsprung: Komplementär

Simone Niggli-Luder:
Ich orientiere mich laufend am Ziel.
Die EGK orientiert sich
laufend an der Gesundheit.
Gemeinsam erarbeiten wir uns den
entscheidenden Vorsprung.
Für den besten Gesundheitsweg.
Auch für Sie.



www.egk.ch/EGK-OL-Weltcupfinal

Presenting Partner des EGK OL-Weltcupfinals

EGK-Gesundheitskasse | Brislachstrasse 2 | 4242 Laufen
T 061 765 51 11 | F 061 765 51 12 | info@egk.ch | www.egk.ch

