



INTERNATIONAL ORIENTEERING FEDERATION

WORLD CUP YLLÄS 2017

Bulletin 2

11.7.2017

Issued by: Suunta 2000

Ski-Orienteering World Cup Opening in Ylläs, Finland

26th November – 3rd December 2017



KOLARI
KASVAA
LUONNOSTA

LAPLAND HOTELS
ÄKÄSHOTELLI



CONTENTS

CONTENTS	1
ORGANIZER	2
EVENT CONTROLLERS	2
PRELIMINARY PROGRAM	3
ENSILUMEN RASTIT OPEN COMPETITIONS.....	3
VENUE	3
EVENT CENTRE	3
ARENA	4
TRANSPORTATION AND CONNECTIONS	4
RULES, CLASSES AND REGULATIONS	5
VISA REQUIREMENTS	5
ENTRIES AND FEES	5
PAYMENTS.....	5
TERRAIN, CLIMATE AND DAYLIGHT	5
PUNCHING SYSTEM.....	6
MAPS AND COURSES.....	6
TRAINING POSSIBILITIES	6
ACCOMMODATION.....	6
EMBARGOED AREA.....	8
MEDIA	8
RESTAURANTS AND SHOPS	8

ORGANIZER

Orienteering Club Suunta 2000, Keminmaa

Event Director	Arto Vilppola arto.vilppola@outokumpu.com +358 40 868 4980
Secretary General	Heidi Komu suunta2000@gmail.com +358 40 743 7557
Course setter	Velu Sipola velu.sipola@pp.inet.fi +358 400 396 345
Media	Marko Vapa marko@urheilumaailma.com +358 40 538 8132

EVENT CONTROLLERS

IOF Senior Event Adviser	Lars Lystad
IOF Assistant Event Adviser	Sindre Jansson Haverstad
National controller	Hannu Myllärinen

PRELIMINARY PROGRAM

Sunday 26th November	Model event Opening ceremony
Monday 27th November	Sprint distance
Tuesday 28th November	Middle distance
Wednesday 29th November	Rest day
Thursday 30th November	Long distance Banquet
Friday 1st December	Reserve day (if some event is postponed)

ENSILUMEN RASTIT OPEN COMPETITIONS

Open 2-day competitions Ensilumen Rastit will be held 2nd - 3rd December. More info later on the event web pages: www.ensilumenrastit.fi

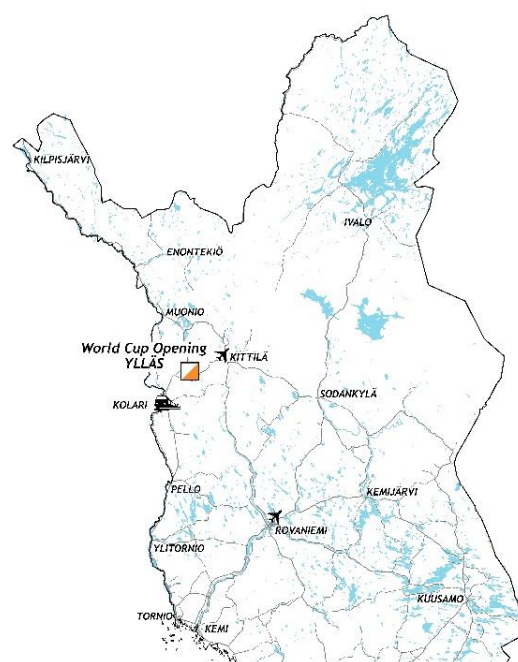
VENUE

Ylläs is located 150 km north of the Arctic Circle in Finnish Lapland. The Ylläs area consists of two original Lappish villages. Äkäslompolo village is located on the northern side of the Ylläs Fell and Ylläsjärvi village on the southern side. The Scenery road (Maisematie) connects the two villages.

EVENT CENTRE

World Cup Opening round 2017 - 2018 will be arranged in Ylläs Äkäslompolo, Ski Resort area in Kolari, Finland.

Event centre will be at **Lapland Hotel Äkäshotelli**, Äkäsentie 10, 95970 Äkäslompolo.



ARENA

The arena is located 5 km from the event centre at the lift station of Aurinko Express slope. The parking area is 1 km from the Arena.

TRANSPORTATION AND CONNECTIONS

Ylläs is accessible by car, bus, train or by plane. Detailed information about local transportation in Ylläs you can find on website: www.yllas.fi

During competition days there are bus transportation from Event Centre Äkäshotelli to Arena and back to Äkäshotelli. Timetable will be published in Bulletin 4.

There is also bus transportation from Parking to the Competition Arena (1 km) on competition days.

By bus to Ylläs

There are bus connections to Ylläs across the country and from Kolari train station and Kittilä airport. Timetables are available on Matkahuolto website:

- ✓ [Matkahuolto](#)

By train to Kolari

You can reach Ylläs by train from Helsinki. Board the night train in the evening, and in the morning you are already in Ylläs. You can also board the train along the route. Timetables are available on VR website. Kolari railway station is 35 km from Ylläs and there is bus transportation from every train.

- ✓ [VR](#)

By plane to Kittilä

The nearest airport is in Kittilä, from which there is a bus connection to Ylläs. Operating flight companies from Helsinki are Finnair and Norwegian. There are also direct connections from European cities like Amsterdam, Dusseldorf, Munchen, London and Manchester. The distance from Kittilä airport is 40 km / 30 min to Ylläsjärvi village and 55 km / 50 min to Äkäslompola village.

- ✓ [Finnair](#)
- ✓ [Norwegian](#)

By plane to Rovaniemi

Alternatively you can fly to Rovaniemi where there is 170 km to Ylläs.

RULES, CLASSES AND REGULATIONS

There is one class for men and women in individual distances. For further details on classes and regulations please refer to the Competition rules on the IOF web pages: <http://www.orienteering.org>

VISA REQUIREMENTS

According to the current regulations, citizens of some countries must obtain a visa in order to enter Finland. Please check the following website for more information: <http://www.formin.fi/>

Visas should be applied at your nearest Finnish Embassy. Please note that conditions of entry to Finland can change and all participants are advised to keep up to date with the current situation by consulting their local Finnish Embassy.

ENTRIES AND FEES

Entries giving the number of competitors of each gender, the number of team officials and the team manager's name, address, e-mail address and phone number shall be done to IOF Eventor by September 30th, 2017. Each competitor's name and gender and the names of the team officials shall be done to IOF Eventor by November 17th, 2017.

IOF Eventor: <https://eventor.orienteering.org/>

The entry fee is 60 € per race per competitor. Entry fee includes model event, participation on the race, competition map and start and result lists.

The accreditation fee for team officials is 60 €. Accreditation fee includes team leader meetings (two participants by each nation), start and result lists, the banquet dinner and transportations between the Event Centre and the Arena.

PAYMENTS

Payments of World Cup entry fees and accreditation fees shall be paid by October 27th, 2017. Fees will be paid to Suunta 2000 ry IBAN: FI6451312720015731 BIC: OKOYFIHH Bank: Kemin Seudun Osuuspankki.

TERRAIN, CLIMATE AND DAYLIGHT

The terrain is situated on slope areas of Ylläs fell and consists of pine and spruce forest and partly open areas. Altitude is 200 - 450 m.

The climate is normal winter weather. Temperature is normally between -5°C to -20°C. The daylight at Ylläs region is between 9 AM to 2 PM.

✓ [Local weather](#)

5 (9)

PUNCHING SYSTEM

EmiTag punching system is used.

MAPS AND COURSES

The overall details of maps and courses are below. The old maps of competition area and former World Cups held in Ylläs are presented on World Cup Ylläs website: www.skioyllas.fi

Competition	Map scale and contour intervals	Contour intervals	Winning time men	Course length, men	Winning time women	Course length, women
Sprint	1:5 000	5 m	13 min	4 km	12 min	3 km
Middle distance	1:10 000	5 m	40 min	13 km	40 min	11 km
Long distance	1:15 000	5 m	90 min	26 km	90 min	23 km

Length of the course is according to the shortest skiable route.

TRAINING POSSIBILITIES

Model Event area open by 26th November. More training areas open after the World Cup races. There are also skiing tracks for training. Observe that the use of the permanent skiing tracks in the embargoed area is forbidden.

ACCOMMODATION

Official accommodation is at Event centre Lapland Hotel Äkäshotelli. Lapland Hotel Äkäshotelli situates in Äkäsentie 10, 95970 Äkäslompola. Lapland hotel Äkäshotelli is the Landmark of Ylläs. More information can be found at [Äkäshotelli website](#).

Accommodation with breakfast:

80 €/person/night in single standard hotel room with shower

44 €/person/night in twin standard hotel room with shower

104 €/person/night in 1 bed room apartment for sole use

55 €/person/night in 1 bed room apartment for 2 persons

44 €/person/night in 1 bed room apartment for 3 persons

38 €/person/night in 1 bed room apartment for 4 persons

53 €/person/night in 2 bed rooms apartment for 3 persons

47 €/person/night in 2 bed rooms apartment for 4 persons

42 €/person/night in 2 bed rooms apartment for 5 persons

Prices include breakfast and free use of hotel saunas, swimming pool and gym. Rates for apartments include also towels, bed linen and final cleaning.

Accommodation with half board (breakfast and dinner):

96 €/person/night in single standard hotel room with shower

64 €/person/night in twin standard hotel room with shower

124 €/person/night in 1 bed room apartment for sole use

76 €/person/night in 1 bed room apartment for 2 persons

63 €/person/night in 1 bed room apartment for 3 persons

58 €/person/night in 1 bed room apartment for 4 persons

73 €/person/night in 2 bed rooms apartment for 3 persons

66 €/person/night in 2 bed rooms apartment for 4 persons

62 €/person/night in 1 bed room apartment for 5 persons

Prices include breakfast, half board dinners and free use of hotel saunas, swimming pool and gym. Rates for apartments include also towels, bed linen and final cleaning.

Accommodation reservations

Accommodation reservations to Lapland Hotel Äkäshotel by phone or email:

[+358 - \(0\) 16 - 553 000](tel:+358-016-553000) / akashotel@laplandhotels.com

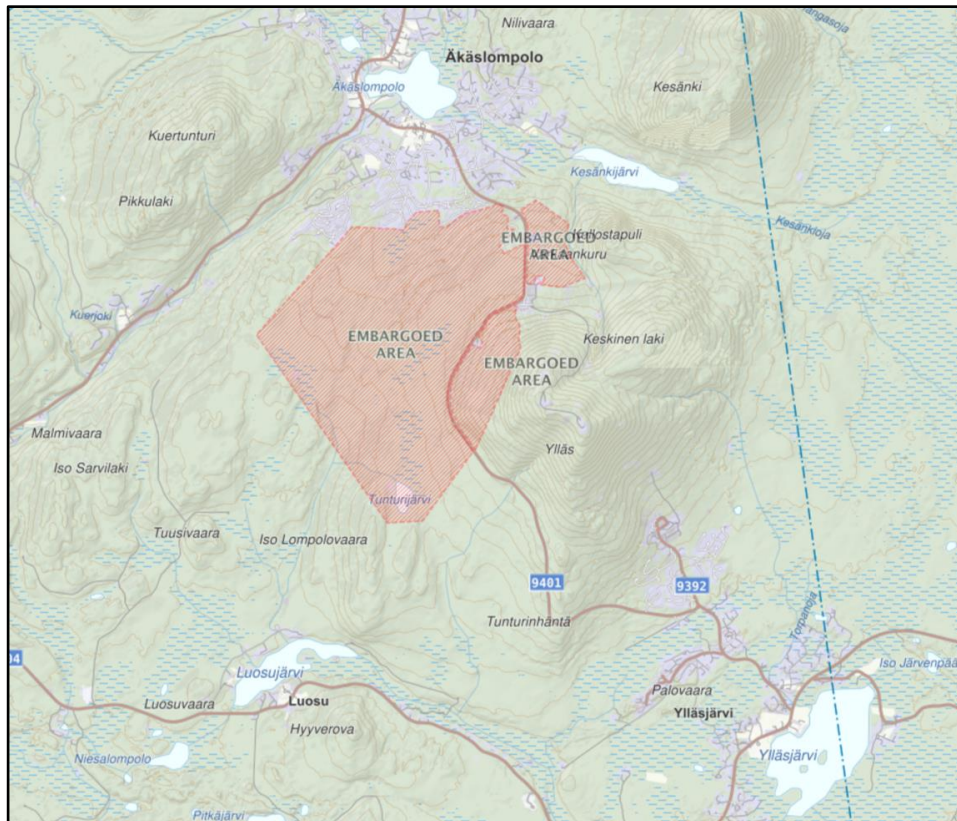
In order to have these special prices, please mention the code: **Suunnistus** when booking. Bookings by 2nd of November 2017 at latest with these special prices.

The booking is confirmed by making a deposit of 100% of the full price before arrival. After making the reservation, hotel will send you a deposit invoice. Confirmed bookings can be cancelled up to 31 days before the date of arrival for an administrative fee of 45€. If cancellations are done after this time, the deposit will be forfeited. Reservations made within 31 days of your arrival date can be cancelled free of charge until the deposits due date.

EMBARGOED AREA

It is forbidden for all potential competitors, trainers, team leaders etc. to visit the area shown in the map, unless permission is specifically given by the organizers and the IOF Event Adviser. Violation of the embargo will result in disqualification.

More detailed map on World Cup website: <http://ensilumenrastit.fi/2017/maps/>



MEDIA

Media Centre will be located inside the Event Centre during opening hours of the Event Office. Press conferences will be held after flowering ceremony or prize giving ceremony in the Arena. Also top athletes and some head coaches will be interviewed during the day of the Model Event in the Event Centre.

Deadline for media accreditation is November 16th 2017. There is no fee for media accreditation. Media accreditation will be done in the IOF Eventor <https://eventor.orienteering.org/> or by email to marko@urheilumaailma.com

RESTAURANTS AND SHOPS

There are several restaurants and shops in Äkäslompola. The official World Cup restaurants and shops can be found at World Cup website: www.skioyllas.fi



SKI ORIENTEERING WORLD CUP OPENING 2017

YLLÄS – FINLAND, 26th November – 3rd December

PARTNERS



CO-PARTNERS



INTERNATIONAL ORIENTEERING FEDERATION