

## Bulletin №2

“With map in Tarnovgrad” and “Three hills cup”

### Organizer

SCO “Trapezitca 1954” Veliko Tarnovo  
Bulgarian orienteering federation  
Veliko Tarnovo Municipality  
Tourist Association “Trapezitca 1902”

### Organizing committee

Competitions will be held under auspices of the major of Veliko Tarnovo Daniel Panov

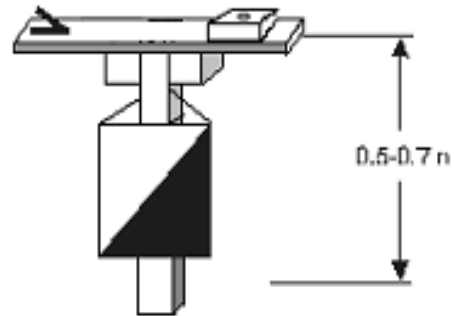
Competition director	Prof. Plamen Legkostup
Event controller	Grigor Karaivanov
Course planner	Georgi Kartalov
Secretary	Konstantin Koynov
IOF advisor	Todor Pedev
Start	Mariyana Atanasova
Finish	Boris Borisov

### Schedule

20 March 2015 (Friday)	16.00	Event center is opened /GPS 43° 5'4.44"C, 5°38'8.63"И/ From 16:00
		Model event - Sprint
21 March 2015 (Saturday)	Until 13:00	Arriving and registration – Sprint final – Arena GPS 43° 5'9.64"C, 25°37'27.56"И
	14:00	First start – M/W21Elite (WRE)
	15:00	Price-giving ceremony M/W21 Elite
	15:15 17:30	Start – all other classes Price-giving ceremony
22 March 2015 (Sunday)	10:00	Start – Middle distance
	13:30	- Price-giving ceremony and Closing ceremony

### Additional information

Control points are type "lantern" on stand with SI station and a punching device as the control number is on the SI station. If there's a problem with the station the competitors should punch on their map.



Control point:

### Start organization

Competitors should arrive 3 minutes before their start. After entering the corridor they clear their SI card. Then they CHECK their SI card. Control descriptions will be given 2 minutes before start. Maps arrangement: **Women – left; Men – right**. The distance between start line and start control "K" must be passed through the marked route.

### Finish organization

Competitors finish through marked corridor from last control point to the finish line. On the finish they stop their time by putting their SI card in the final station. Then they walk through marked corridor to read their SI card and get their time sheet. Maps should be given to the organizers after finishing. Competitor who don't finish should give their map to the organizers at the finish area.

The mark to the finish and start will be red-white tape. For M/W 10 white paper tape will be used.

**IOF Competition rules forbid the use of GPS devices unless there is "no display or audible feedback"**

Complaints should be sent to organizers no more than 30 minutes after the problem.

According to IOF rules, doping is strongly forbidden.

**The organizers strongly recommend to tighten your ankles and run with long bottoms for the middle distance!**

We beg you to throw your litter only in the marked places! Lets keep our nature clean!

### Technical information

#### Sprint distance - WRE

Map „Kartala" 2015, Scale: 1:4000, contours - 2.5 m, according IOF – ISSOM 2007, Made – February 2015 Map size – A4. Descriptions will be printed on the front side of the map. There will be additional on the start.

Terrain Moderately to severely truncated terrain, urban part and park areas.

Road network	Very well developed.
Water	Poor on water objects.
Vegetation	Different park and urban vegetation in all categories.
Start interval	1 minute

### Course information – SPRINT DISTANCE

Class	Length	CP	Climb	Class	Length	CP	Climb
M10	800 M	8	25 M	W10	800 M	8	25 M
M12	1600 M	14	50 M	W12	1500 M	13	45 M
M14	2200 M	14	60 M	W14	1700 M	14	45 M
M16	3150 M	20	80 M	W16	2600 M	17	75 M
M20(18)	3550 M	23	100 M	W20(18)	3250 M	22	90 M
M21E	3550 M	23	100 M	W21E	3250 M	22	90 M
M21A	2200 M	14	60 M	W21A	1700 M	14	45 M
M35	3150 M	20	80 M	W35	2600 M	17	75 M
M40	3000 M	18	80 M	W40	2350 M	16	75 M
M45	3000 M	18	80 M	W45	2350 M	16	75 M
M50	2400 M	15	60 M	W50	2150 M	16	60 M
M55	2400 M	15	60 M	W55	2150 M	16	60 M
M60	2150 M	16	60 M	W60	1950 M	14	55 M
M65+	1950 M	14	55 M	W65+	1950 M	14	55 M
Open 1	1500 M	13	45 M	Open 2	2350 M	16	75 M

### Distances

Event center – Finish – 2 KM

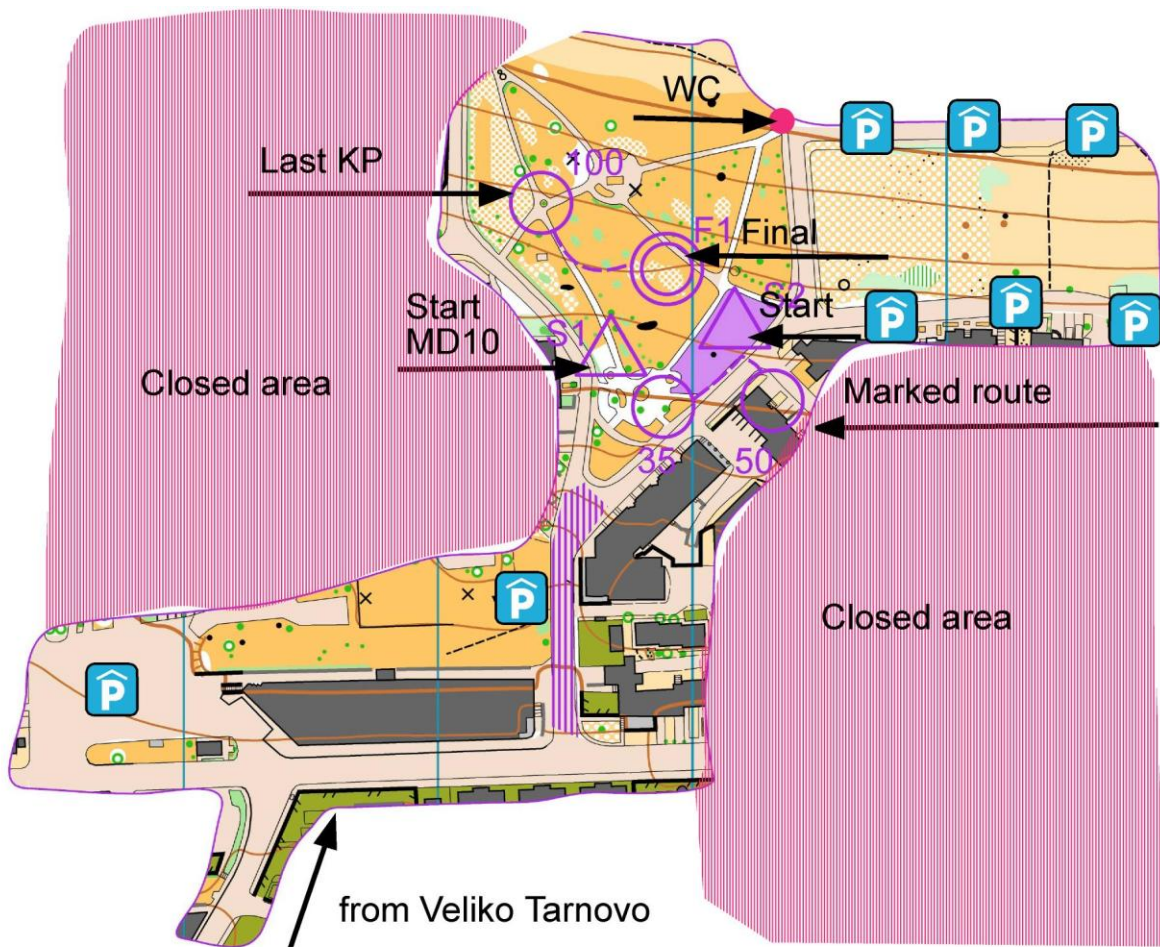
Finish – Start - 20 M – Marked route

Last control – Finish : 60 M

**Start – Control K – 80m marked**

**Spectator controls – marked with corridor**

### Scheme – Sprint distance





## Sprint distance:



## Technical information

### Middle distance – 22 March 2015 (Sunday)

Map	“Shemshevo - North”, Scale: 1:7500, contours - 5 м; according IOF rules, Map was made – September 2014, updated – 2015. Maps will be in plastic bags. Control description will be printed on the front side. Additional will be available at the start. Map size – A4(29,7x21cm)
Terrain	Moderately to severely truncate terrain will many poing objects, ground holes and different types of rocks – <b>most of them are more than 20-30 meters height, drawn on the map with symbol 202. There are no courses that are passing them in the dangerous parts.</b>
Road network	Poor on paths terrain, with some different categories, some of them are very hard to be seen due to low usability.
Hydrography	Poor on water objects terrain.
Vegetation	Diverse deciduous forest that varies in all categories. 35% are open areas.

## Other information

There will be water and buffet in the finish arena.

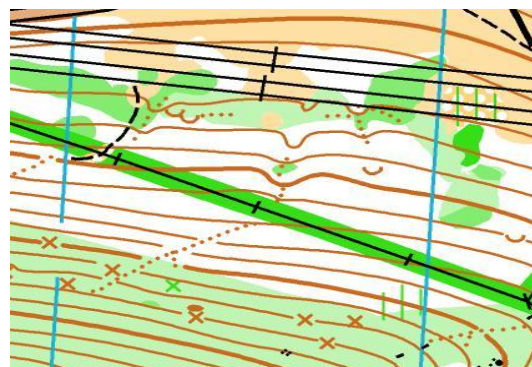
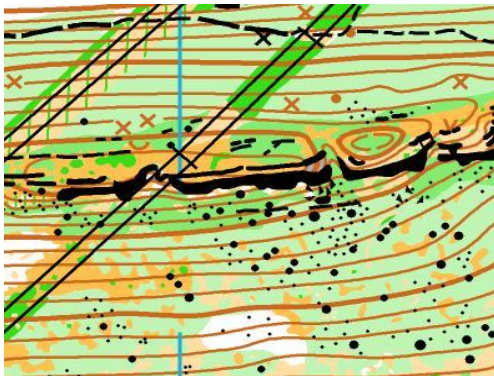
## Course information – Middle distance

Class	Length	CP	Climb	Class	Length	CP	Climb
M10	1200 м	4	35 м	W10	1200 м	4	35 м
M12	2000 м	10	120 м	W12	1900 м	9	90 м
M14	2500 м	12	150 м	W14	2300 м	12	145 м
M16	4100 м	14	220 м	W16	3300 м	14	200 м
M20(18)	4300 м	18	250 м	W20(18)	4000 м	14	245 м
M21E	5500 м	21	280 м	W21E	4000 м	14	245 м
M21A	2600 м	12	150 м	W21A	2400 м	12	145 м
M35	4100 м	14	220 м	W35	3400 м	14	200 м
M40	3800 м	16	180 м	W40	3100 м	13	170 м
M45	3800 м	16	180 м	W45	3100 м	13	170 м
M50	3300 м	17	145 м	W50	3000 м	13	135 м
M55	3300 м	17	145 м	W55	3000 м	13	135 м
M60	2600 м	11	135 м	W60	2300 м	10	130 м
M65+	2600 м	11	135 м	W65+	2300 м	10	130 м
Open 1	1800 м	9	90 м	Open 2	3100 м	13	195 м

### Distances

Event center – Finish – 8 км  
 Finish – Start: 50 м (Marked route from finish arena with white-red tape)  
 Start – Control K : 0 м  
 Last CP – Finish : 90 м

### Middle distance:



## Scheme – Middle



### Contacts

For more information or questions:

Email: [skotrapezitca1954@abv.bg](mailto:skotrapezitca1954@abv.bg)

Web: [СКО \"Трапезица 1954\"](http://СКО \)

Welcome to Veliko Tarnovo!