



WTOC 2017

Bulletin 3

10-15 July 2017 Birštonas, Lithuania



INTERNATIONAL ORIENTEERING FEDERATION

CONTENTS

| | |
|--------------------------------------|----|
| WELCOME BY THE EVENT DIRECTOR | 3 |
| WELCOME BY THE COURSE SETTER | 3 |
| VENUE | 4 |
| ORGANISING TEAM | 5 |
| COMPETITION RULES | 5 |
| EVENT PROGRAMME | 6 |
| TRAINING POSSIBILITIES | 6 |
| EVENT CENTRE AND ACCOMMODATION | 7 |
| EMBARGOED AREAS | 8 |
| TERRAIN, MAPS, COURSES | 9 |
| COMPETITION CLOTHING | 10 |
| ENTRIES | 10 |
| CATERING | 12 |
| CLIMATE | 13 |
| TRANSPORT | 13 |
| MEDIA | 13 |
| VISA REQUIREMENTS | 13 |



WELCOME BY THE EVENT DIRECTOR

Dear orienteering friends,

On behalf of the Organising Committee and the executive organiser Orienteering Club Falco, I am pleased to welcome all the competitors, team leaders, officials and guests to the World Trail Orienteering Championships 2017 in Lithuania.

Trail Orienteering in Lithuania has a short but rich history, dating back to 2004 with our first participation at WTOC in Sweden, where the Lithuanian team was the third of seven in attendance. The second World Trail Orienteering Championships held in 2005 in Japan was the most successful for the Lithuanian team: Evaldas Butrimas in the Paralympic class became the world champion and the Lithuanian team took second place. Lithuania has hosted the TrailO European Championships in 2006. Some 4 years ago, OSK Falco was established specially for maintaining TrailO events in Lithuania and ECTO (Unofficial European Cup in TrailO) competition stages were organised in Palūšė (2014), Kaunas (2015) and Druskininkai (2016). WTOC 2017 will be the first IOF event of the highest level in Lithuania and we are looking forward to organising it at the highest standard level. Organising WTOC is a big honour, but yet also a big challenge for us. We will try our best to make a fair competition with good and precise maps and fair competitive tasks for all participants.

The Event Centre will be established in the Lithuanian spa city Birštonas, with its history as one of the oldest balneology resorts in Europe recorded from the Middle Ages. Competitions will be held near Birštonas and other historic places - Aukštadvaris and Trakai - Lithuania's ancient capital, founded by Duke Gediminas.

PreO 1 will be held on Rumšiškės Open Air Museum territory. The Lithuanian Folk Museum Rumšiškės is based on residential and farm buildings, moved from various regions of Lithuania – Aukštaitija, Suvalkija, Dzūkija, Žemaitija and Lithuania Minor. They are grouped in complexes: farmsteads, small villages, and towns. Buildings of different epochs and social strata have typical stylistic features, planning, design and decor items. It is a restored building environment, with fences, green plantations and sacred monuments.

The other competition places were also picked to be not only challenging for orienteering, but for sightseeing as well.

I wish all of you a lot of success at our event in 2017, hoping that we will manage to organise it on the highest possible level.

Darius Gimžauskas, Event Director



WELCOME BY THE COURSE SETTER

Dear orienteering friends,

As you have already noticed, a falcon – a bird with extra good vision and the ability to choose very quickly the right choice from a distance – is on the WTOC 2017 logo. We have chosen it as the symbol for the whole Event, and expect that your capabilities in the competition will be as good as the falcons.

The course terrains were picked to be challenging and tricky for task-solving. We will do our best to make precise maps and tasks. My goal – each control to be a conundrum with the solution you will have to find out. No rest together with maximum concentration will lead the strongest competitors to victory.

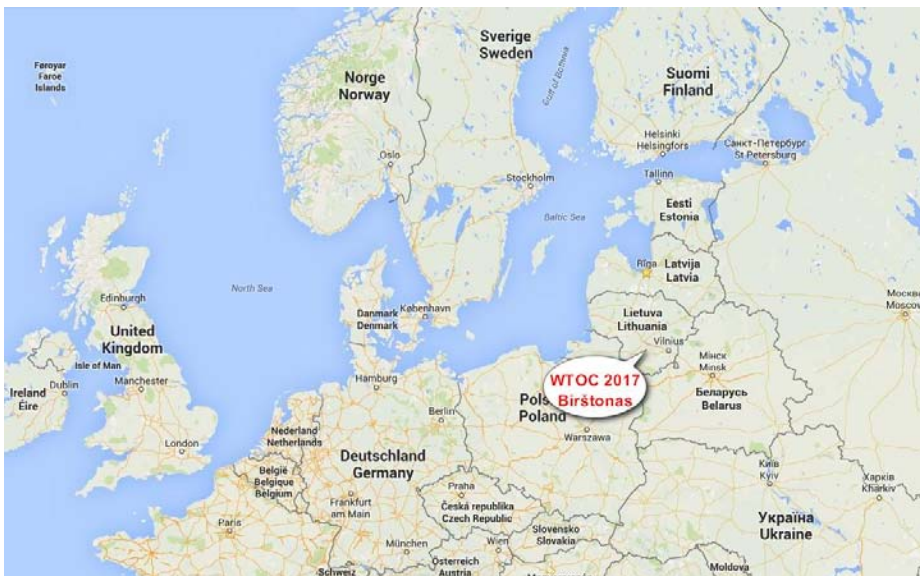
I am pleased to have the opportunity of planning and setting courses for World TrailO elite. Let the strongest win, not eventuality.

Andrius Jovaiša, Course Setter

VENUE

The World Trail Orienteering Championships 2017 will be held in Birštonas, Lithuania. The competitions will be held in various places. The longest distance of 63km, 50 minutes driving from the Event Centre, is to the Relay venue.

The Event Centre is 95km. (1h. 15min. drive) from Vilnius airport and 58km. (50min. drive) from Kaunas airport. We recommend car rental; there will be many attractive places to visit during the Event. The event organisers will offer options for the teams to buy transportation services from/to the airport. There will also be the possibility of buying transportation services from the Event Centre to the competition venues, or to use a 'team bus' service with driver during the entire Event period.



Birštonas is a balneological resort and a spa town in Lithuania, situated on the right bank of the Nemunas River. Birštonas is known for its mineral water. This water is used by sanatoriums for mineral water pools and baths. Birštonas is a place of tranquility and for relaxation in the nature, but it is in close distance of the major Lithuania towns Vilnius and Kaunas, where many attractions and interesting places with rich history can be found.



ORGANISING TEAM

The event will be organised by members of the Orienteering Club “Falco”, under the auspices of the Lithuania Orienteering Sport Federation.

Darius Gimžauskas ...Event Director
Andrius JovaišaMapping team,
Course Setter
Jonas AleknavičiusAdministration
Manager
Donatas Lazauskas .. Media Director
Aušra Bartkevičienė .. Marshals
Linas Šilkaitis IT solutions

Ola Wiksell (SWE)
IOF Senior Event Adviser

Kyllikki Anttila (FIN)
IOF Assistant Event Adviser

Egidijus Kukenys (LTU)
National Controller



COMPETITION RULES

The Competition Rules for IOF Trail Orienteering Events (valid from 1st January) shall apply to the World Trail Orienteering Championships 2017. A copy of the Rules is available for download from the Rules section in the official IOF website:

<http://orienteering.org/trail-orienteering/rules/>

There will be no deviations from the rules.

The SPORTident (SI) system will be used for time measuring and punching answers on PreO courses.

Organisers will provide SI-Cards free of charge to all competitors, but in case of loss a fee of 50 EUR will be charged.

EVENT PROGRAMME

| DATE | TIME | EVENT | PLACE |
|--------------|-------|-------------------------------------|------------------------------------|
| Mon, July 10 | 09:00 | Event Office opens | Birštonas, Event Centre |
| | 11:00 | TempO Model Event | Birštonas city |
| | 12:00 | Deadline to enter TempO event names | Birštonas, Event Centre |
| | 18:00 | Team Officials Meeting | Birštonas, Event Centre |
| | 19:00 | Opening Ceremony | Birštonas, Event Centre |
| Tue, July 11 | 09:00 | TempO Qualifications | Harmony Park, Vazgaikiemis |
| | 13:00 | TempO Public | |
| | 17:00 | TempO Finals | |
| | 20:00 | TempO Awards Ceremony | |
| Wen, July 12 | 11:00 | PreO Model Event | Aukštadvaris |
| | 12:00 | Deadline to enter PreO event names | Birštonas, Event Centre |
| | 18:00 | Team Officials Meeting | Birštonas, Event Centre |
| Thu, July 13 | 10:00 | PreO Day 1 | Rumšiškės |
| | 14:00 | PreO Public 1 | Rumšiškės |
| | 18:00 | Team Officials Meeting | Birštonas, Event Centre |
| | 19:00 | Deadline to enter Relay event names | Birštonas, Event Centre |
| Fri, July 14 | 10:00 | Relay Event | The Capitals Golf Club, Pipiriškės |
| | 16:00 | Relay Awards Ceremony | |
| Sat, July 15 | 10:00 | PreO Day 2 | Aukštadvaris |
| | 14:00 | PreO 2 Public | Aukštadvaris |
| | 17:00 | PreO 2 Awards and Closing Ceremony | Aukštadvaris |
| | 19:00 | Banquet | Birštonas |

IMPORTANT: Please note that the Relay Event is on July 14 and PreO Day 2 is on July 15. This is the reverse of what was published in Bulletin 2.

The exact times of events can be changed if the situation requires. If so, this will be announced at Team Officials Meetings.

TRAINING POSSIBILITIES AND PUBLIC EVENT

Unofficial European Trail Orienteering Cup stages 5 and 6 will be held in Daugavpils, Latvija (260km, 3.5 hours by car from Event Centre) on 7, 8 and 9 July. You can find more information here:

http://okstiga.com/results/2017/ecto_bulletin2.pdf

Open Public events will be held during WTOC on the WTOC courses, on the same days, after the

official WTOC programme. The whole event includes 1 TempO competition (WTOC Qualifications), 2 PreO competitions (WTOC Day 1 + Day 2) and 2 model events.

Entry fees are 15 EUR per competition, 5 EUR per model event or 45 EUR for the whole event.

For all juniors (born 1995 and later) entry fees are 5 EUR per competition/model or 15 EUR for the whole event.

Final entries should be made by June 25 2017, using OrienteeringOnline registration system at:
<http://www.orienteeringonline.net/CompetitionBasicInfo.aspx?CompetitionID=3408>

A limited number of late entries will be accepted on site, while there are available maps.

Full information on the Public event can be downloaded here:

http://wtoc2017.lt/wp-content/uploads/2017/05/Bulletin_WTOC2017_Public.pdf

EVENT CENTRE and ACCOMMODATION

Royal SPA Residence 4*

<http://www.royal-spa.lt/en/>

This four-star hotel will serve as the Event Centre.

Address: Pakalnės g. 3, Birštonas 59201, Lithuania. The Event Centre can be reached by phone: +370 60467070.

Accommodation for the teams and other guests will be organised centrally, but is not compulsory at the Event Centre. The aim is to create an 'Olympic Village' atmosphere for athletes and teams. The hotel offers accommodation options from Economy to Superior.



The hotel's rooms and infrastructure are adapted for people with disabilities and fully accessible for wheelchair users. The hotel is well located in nature, has free car parking space and all facilities needed.

The Event organisers will make efforts to accommodate all event participants in one place. Below are prices which are available until the registration deadline. After the registration deadline, the organisers do not guarantee that the prices and rooms shown below will still be available.

All accommodation requests with detailed requirements should be send to: info@wtoc2017.lt

As there are a limited number of rooms available (see below), requests will be served in order of receipt.

Payments for the reserved rooms should be made no later than June 10 2017.

| Room Type | Economy | | Standard | | Mini Lux | | Mini Apartment | | | | Apartment | | Birštonas City tax per pax per day |
|------------------------------|---------------|--------|---------------|--------|---------------|--------|----------------|--------|-----------------|-----------------|-----------|--------|---|
| Total rooms | 16 | 6 | 14 | | 18 | | 35 | | | | 3 | | |
| Room occupancy | Double | Single | Double | Single | Double | Single | Double | Single | Double for 3 | Double for 4 | Double | Single | |
| Room price per day EUR | No rooms left | | No rooms left | | No rooms left | | 102 | 95 | 134 | 166 | 122 | 112 | |

All prices are for the room per night and include breakfast and free access to SPA centre. In addition, dinner will be available at the price of 10.00 EUR per dinner. Please request with accommodation package.

There are mini kitchens available in every apartment, and a mini dining room with kitchen on every floor of the hotel, free to use.

Competitors and other event participants are free to accommodate themselves in any other place.

EMBARGOED AREAS

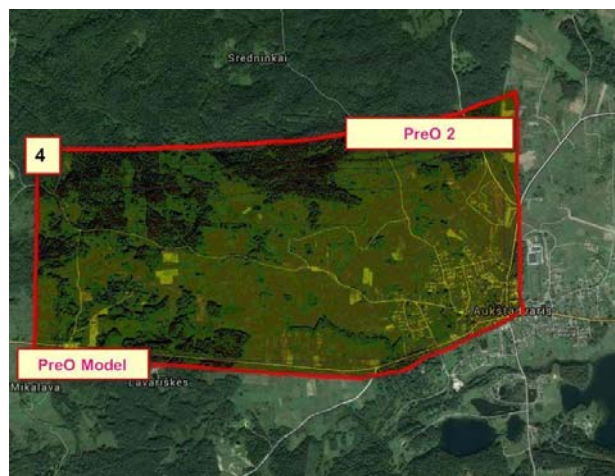
The map of all embargoed areas can be found here:

<https://drive.google.com/open?id=1NjzSLoxS5DIbikfLwm2nOSaoTBo&usp=sharing>

All embargoed areas marked and numbered from 1 to 6 have a full embargo, and must not be visited by any potential WTOC 2017 team members (competitors, officials, escorts...) or any other person who may influence the results of the competitions.



1. The city of Birštonas and parks within it.
2. The territory Harmony Park.
4. The territory within the square 3km East and 1km. North from the centre of the city Aukštadvaris.
5. The territory within the Open Air Museum of Lithuania.
6. The territory within the Capitals Golf Club.



TERRAIN, MAPS, COURSES



HARMONY PARK: TempO Qualification and Final.

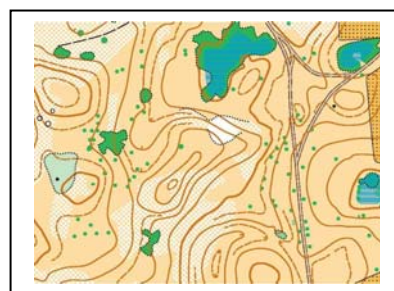
1:4000, contour interval 2.5 m, ISSOM. NO PREVIOUS MAP.

Urban area and parks; terrain with mid-sized slopes; subtle terrain details; open and semi-open areas. No or minimum need of assistants (some slopes) for wheelchair users. Paved tracks.

Qualification: 2 heats, course length 1.2km, climb: 10m, 5 stations with 5 timed controls at each.

Final: course length: 2.6km, climb: 25m. 6 stations with 5 timed controls at each.

Assembly point: 54°34'43.6"N 23°53'31.4"E 54.578771, 23.892060



AUKŠTADVARIS: PreO model, PreO 2

1:4000, contour interval 2.5 m, ISSOM.

FootO competitions in 2008, MTBO competitions in 2012.

No TrailO competitions held.

Mainly open land with many vegetation objects and mid-sized landforms. Assistants for wheelchair users are needed, due to unpaved field tracks and slopes.

PreO model: course length: 1.5km, climb: 25m, 11 controls, 1 station with 3 timed controls.

Assembly point: 54°34'38.4"N 24°28'47.3"E 54.577341, 24.479801

PreO 2: course length: 2.5km, climb: 35 m, 28 controls, 1 station with 3 timed controls at the end.

Assembly point: 54°34'44.4"N 24°31'25.9"E 54.579007, 24.523871



RUMŠIŠKĖS: PreO 1

1:4000, contour interval 2.5 m, ISSOM

FootO competitions in 2012, TrailO competitions in 2012.

Partly open land and partly mature forest, with vegetation and man-made objects, mid-sized landforms.

Assistants for wheelchair users are desirable due to slopes. Paved tracks.

Course length: 2.8km, climb: 50m, 21 controls, 1 station with 3

timed controls at the beginning.

Assembly point: 54°51'59.2"N 24°12'08.6"E 54.866447, 24.202379



CAPITALS GOLF CLUB: Relay

1:4000, contour interval 2.0 m, ISSOM. NO PREVIOUS MAP.

Golf course terrain. Mainly open land with some vegetation objects and mid-sized landforms.

Assistants for wheelchair users are needed due to unpaved field tracks and slopes.

The optimal team course length: 4.6km, climb: 75m, 27 controls

(each leg 9 controls). 1 TempO station with 4 timed controls for leg 1 and leg 2.

2 TempO stations with 4 timed controls each for leg 3.

Assembly point: 54°43'13.1"N 24°45'28.3"E 54.720316, 24.757859

COMPETITION CLOTHING

There are no special regulations concerning the type of footwear or clothes, except for the Relay competition on the golf terrain where spiked shoes are forbidden. A normal sports outfit of a national team is acceptable, with sun and rain protection as usual. It is recommended that you have protection against insects (mosquitoes, ticks).

During the official opening and award giving ceremonies, national team uniforms are preferable. National flags, signs, sunglasses, hats, headbands, bottles and other such items are not allowed on the award-giving stage.

Event polo sport shirts and sun caps will be made. Marshals will wear green ones. There will be a limited number of yellow shirts available for competitors to buy, at a price of 25EUR. It is possible to order in advance. Please send the size and quantity required to info@wtoc2017.lt and they will be ready for you to collect on arrival.



ENTRIES

All entries should be made through IOF Eventor. No other means of entry is accepted.

<https://eventor.orienteering.org/Events/Show/5179>

The number of competitors and team officials should reach the organiser no later than 21st May 2017.

According to the valid Competition Rules, the following applies for competitors who intend to compete within the Paralympic class:

Rule 5.3 Only competitors who have a permanent disability that significantly reduces their mobility are eligible to be entered for a World Championship Paralympic class competition.

Competitors for the Paralympic class shall submit to the IOF, at least eight weeks before the competition, an eligibility form (available at www.orienteering.org) completed by a doctor. When approved, a certificate authenticating their Paralympic status will be issued. The eligibility certificate must be sent to the event organiser with the final entry form.

Final team entries, including competitors names, must be entered by 30th June. All competitors must provide a recent portrait photo to info@wtoc2017.lt; otherwise the photo saved at Eventor will be used.

We kindly ask all competitors also to fill out the Competitor Personal Information form, in order to provide information for media and official speakers.

Final competitors' name entries for the TempO and PreO competitions have to be entered by 12 noon on the day before the competition. Personal start lists will be published and handed out during the Team Officials Meeting the day before. Final competitors' name entries for the Relay have to be entered by 19.00 on 13th July at the latest. It will be possible to submit names at the July 13th Team Officials Meeting.

All replacements of registered competitors are possible according to the Competition Rules (Section 9).

| Fees | EUR |
|--|------------|
| Accreditation fee for Athletes | 80 |
| Accreditation fee for Team Officials | 80 |
| Accreditation fee for Accompanying Persons | 50 |
| Entry fee for PreO day 1+2 | 100 |
| Entry fee for TempO | 70 |
| Entry fee for Relay (per team) | 120 |
| Banquet | 20 |
| Transport package | 70 |

The accreditation fee for Athletes and Team Officials includes participation in the model events, competition maps, start lists and results.

The accreditation fee for Team Officials includes Public events availability at no cost, and/or a tour of the full course after the last competitor has finished.

The accreditation fee for Accompanying Persons includes the official information package at registration, participation in the model events and Opening Ceremony, and opportunity to register for the closing banquet.

The entry fee for Athletes includes participation in the relevant WTOC competitions (qualification and finals, when qualified).

There is no limit on the number of accredited Team Officials or Accompanying Persons. Entries will not be valid until the entry fees have been paid - no later than 10th June 2017.

All payments for entries and accommodation should be made to the same account:

Beneficiary: OSK Falco
 Beneficiary address: Kauno g. 59, Ramučiai, kauno r. LT54467, Lithuania
 Account: LT797044060007814548
 Bank: AB SEB bankas, SWIFT: CBVILT2X; BIC: 70440
 Bank address: Gedimino pr. 12, LT-01103 Vilnius, Lithuania

LIST OF PRELIMINARY ENTRIES

| Federation | Athlete accreditation | Team Official | Accompanying person | Total |
|---|-----------------------|---------------|---------------------|------------|
|  China | 1 | | | 1 |
|  Croatia | 4 | | | 4 |
|  Czech Republic | 8 | | | 8 |
|  Denmark | 6 | 1 | 2 | 9 |
|  Egypt | 6 | 2 | | 8 |
|  Finland | 8 | 1 | 3 | 12 |
|  Germany | 2 | | | 2 |
|  Great Britain | 6 | 1 | 2 | 9 |
|  Hong Kong | 4 | | | 4 |
|  Hungary | 2 | | | 2 |
|  Italy | 7 | 1 | 1 | 9 |
|  Japan | 7 | 3 | 2 | 12 |
|  Latvia | 7 | 2 | | 9 |
|  Lithuania | 7 | | | 7 |
|  Netherlands | 1 | | | 1 |
|  Norway | 8 | 1 | | 9 |
|  Poland | 3 | | | 3 |
|  Portugal | 6 | 1 | 1 | 8 |
|  Slovakia | 4 | | | 4 |
|  Slovenia | 3 | | | 3 |
|  Spain | 6 | | | 6 |
|  Sweden | 10 | 1 | | 11 |
|  Ukraine | 6 | 1 | | 7 |
|  United States | 6 | 2 | | 8 |
| Total | 128 | 17 | 11 | 156 |

CATERING

Breakfast is included in the accommodation price, where booked centrally.

Dinner will be available at the price of 10.00 EUR per dinner in addition to the accommodation price. Dinner orders should be made together with the accommodation request. It will be possible to buy dinner at the Royal SPA Residence on arrival.

Lunch at the price of 10.00 EUR per lunch will be provided in competition arenas on request. Lunch orders should be made in the registration process (Eventor) as an additional service, or a request sent together with the accommodation request.

CLIMATE

The climate in Lithuania is temperate continental. Average daily temperatures in July are around 14°C in the morning and reach 22°C at midday. It is unusual, but possible on a sunny day, for temperatures to rise up to 30°C or even higher. It is possible to have a few rainy days in a row, with temperatures dropping down to 15°C or lower.

For a precise weather forecast before WTOC, check out the Lithuanian meteo service: www.meteo.lt/en/

TRANSPORT

IMPORTANT:

Vilnius airport will be totally closed from 14 July 2017 until 18 August 2017 for reconstruction. All flights will be re-directed to Kaunas airport. It is important information for those who are going to rent a car at the airport.

Teams are free to use their own transport to all events. There will be reserved parking areas at all the arenas.

Organised transport will be provided from the Event Centre to the competition arenas, model events and banquet for those teams, VIPs and media representatives that have requested it and paid the Transport package. Please add additional Transport package service for each competitor in the registration process (Eventor) if needed.

Organised transport adapted for wheelchair users will be provided upon request.

The organisers can arrange transport from and to the Vilnius and Kaunas airports, railway stations or bus terminals on request (not included in the Transport package). All such requests should be sent to info@wtoc2017.lt

Transport routes and schedules will be published in Bulletin #4.

MEDIA

For information about accreditation, accommodation and all events please contact info@wtoc2017.lt

Media representatives should contact the Event Media Manager Mr. Donatas Lazauskas directly, by phone +37068582648 or e-mail: contact@sportfoto.lt

VISA REQUIREMENTS

According to the current regulations, citizens of some countries must obtain a visa in order to enter Lithuania. Please check the following website for more information:

<http://www.migracija.lt/index.php?-1488882078>

PARTNERS



ORGANISERS



OSK "Falco"

Kauno g. 59, Ramučiai, Kauno raj, LT54467 Lithuania

+370 68788771 info@wtoc2017.lt

www.wtoc2017.lt www.facebook.com/WTOC2017