



Engadin, Scuol
Switzerland
9-15 July 2016

JUNIOR WORLD ORIENTEERING CHAMPIONSHIPS



1. Welcome

Dear athletes and orienteering friends,

On behalf of the Swiss Orienteering Federation and the Organising Committee, I am pleased to welcome competitors, team leaders, officials, guests and spectators to the 2016 Junior World Orienteering Championships (JWOC) in Switzerland.

JWOC will be held in the Engadine, one of the most beautiful and best known holiday regions in Switzerland. In those magnificent surroundings, we will give our best effort to offer exciting and fair competitions, as well as unforgettable moments.

In Scuol, we are going to organise a challenging JWOC in high quality areas and with excellent maps. We also want to offer a fantastic orienteering event for the spectators on site and at home.

I had the chance to participate three times at various JWOCs and have brought home many good memories. My great wish and commitment is for the athletes to return from these JWOC with many positive experiences after an exciting week in Scuol! Participating at JWOC is often the first step to an ambitious international career and I am very happy to offer this opportunity to all junior athletes on my home turf.

See you in Scuol; we are looking forward welcoming you there.

Simone Niggli
Event Director JWOC 2016

1

BULLETIN



Engadin
Scuol

2. Venue and Access

The Junior World Orienteering Championships centre is in Scuol, which has been a well-known wellness resort for over 130 years. Over 20 mineral springs form the basis for the spa culture. The pristine nature and the active Romansh culture are characteristic of Scuol and the national park region. See under www.scuol.ch The Swiss National Park with its colourful alpine flora and unique fauna lies right next to Scuol and the JWOC forests. On the way to the JWOC long distance event you will cross part of this primal, alpine landscape. See under www.nationalpark

How to reach Scuol



By air

Scuol is 180km from the Zurich airport and 120km from the Innsbruck airport. These airports are served by numerous airlines to worldwide destinations.



By car

Scuol is easily accessible by car within Switzerland, from Austria and Italy. Be aware that there are plenty of switchbacks along the way to Scuol and allow extra time to enjoy the scenery and the views along the way.



By train

Zurich airport is linked directly to the national railway network. Scuol can be reached by train within 3 hours from the Zurich airport. Scuol has its own railway station with hourly connections either to St. Moritz or through Landquart to Zurich. The railway passes fantastic mountain scenery, some of which is listed as UNESCO World Heritage. (www.rhb.ch/en/world-of-railway-experiences/unesco-world-heritage)

3. Provisional Programme

DATE		EVENT	PLACE
Saturday	9 July 2016	TRAINING AND MODEL EVENTS OPENING CEREMONY	Scuol region
Sunday	10 July 2016	SPRINT FINAL	Scuol
Monday	11 July 2016	LONG FINAL	Pass dal Fuorn
Tuesday	12 July 2016	REST DAY	
Wednesday	13 July 2016	QUALIFICATION MIDDLE	Ftan
Thursday	14 July 2016	MIDDLE FINAL	Susch-Lavin
Friday	15 July 2016	RELAY CLOSING CEREMONY	Tarasp

4. Training Opportunities

Several orienteering maps are available in the areas of Scuol, in the Engadine and throughout Graubünden. Detailed information will be posted on the website and in Bulletin N°2.
Contact: training@jwoc2016.ch

5. Event Centre and Accommodations 6. Classes and Age Restrictions

The official Event and Media Centre for JWOC2016 will be in Scuol.

Teams will have a wide choice of accommodations either in hotels of different standards, in self-catering flats, youth hostels or group accommodations.

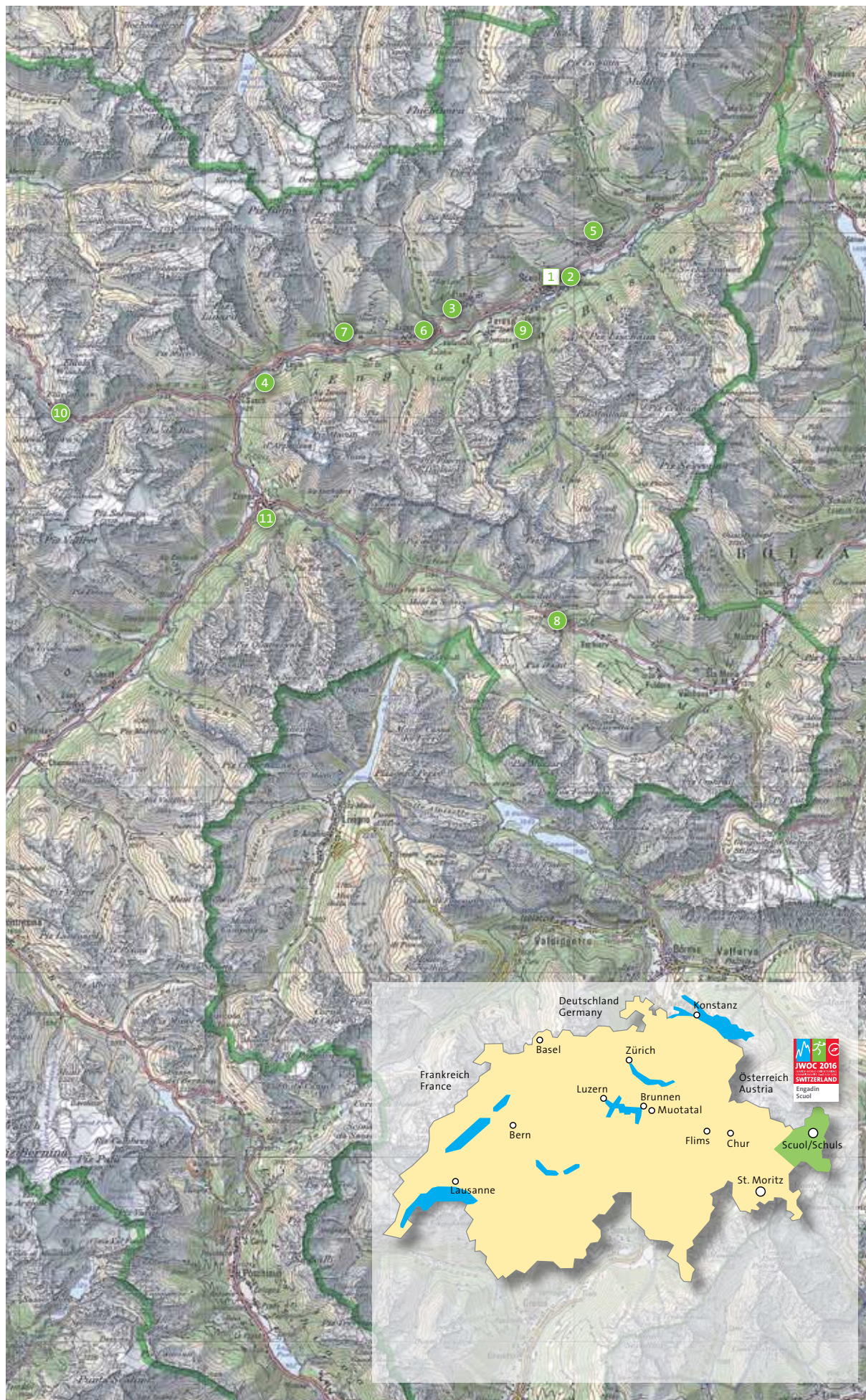
Find detailed information on the website and in Bulletin N°2.

W 20, M 20. All competitors must be born in or after 1996 and must be full passport holding citizens of the country they are representing.



7. Embargoed Areas

Overview map



Scuol
JWOC Centre

2 Scuol¹
JWOC Sprint
Nationaler Sprint OL
National sprint event

3 Ftan²
JWOC Qualifikation
qualification
Auf den Spuren
der Champions
In the footsteps of
the champions

4 Susch-Lavin¹
JWOC Mitteldistanz
middle distance
Regionaler OL
Mitteldistanz
Regional event
middle distance

5 Sent¹
6 Ardez¹
7 Guarda¹
JWOC Ruhetag
Rest day
Schellen-Ursli OL Sprints
Schellen-Ursli O sprints

8 Pass dal Fuorn²
JWOC Langdistanz
Long distance
Auf den Spuren
der Champions
In the footsteps of
the champions

9 Tarasp¹
JWOC Staffel
Relay
Auf den Spuren
der Champions
In the footsteps of
the champions

Welcome O

10 Flüelapass¹

8 Pass dal Fuorn²

Model Events

5 Sent¹

6 Ardez¹

8 Pass dal Fuorn²

11 Zernez-Selva²

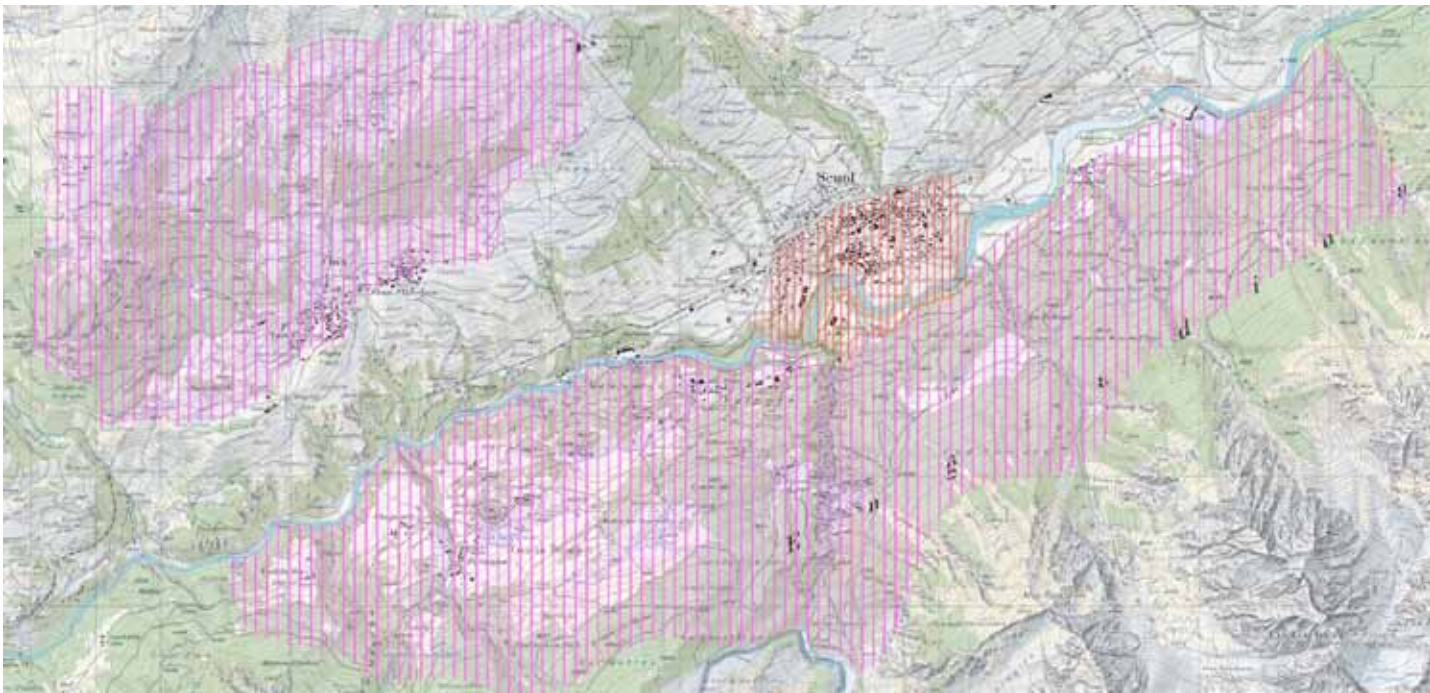
¹ erstmals für OL kartiertes Gelände
First-time mapped area for orienteering

² neu überarbeitete OL-Karte
Revised O map

Sprint Scuol



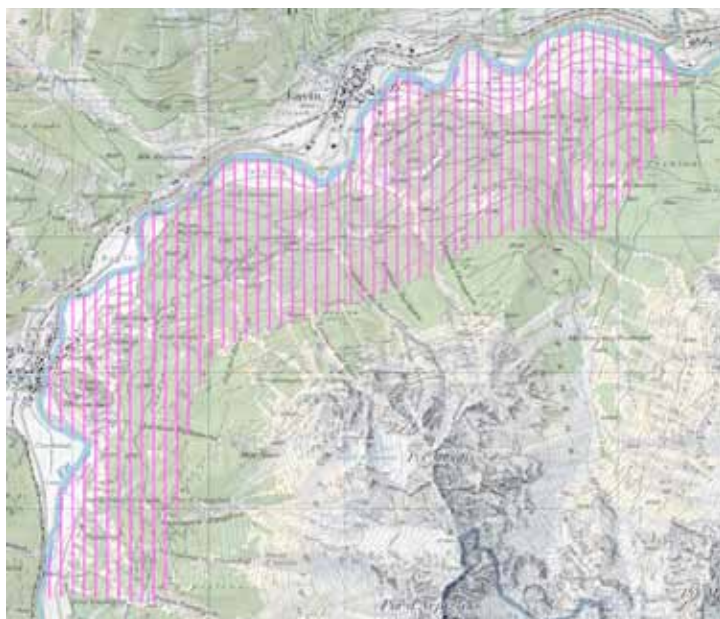
Qualification Race Ftan and Relay Tarasp



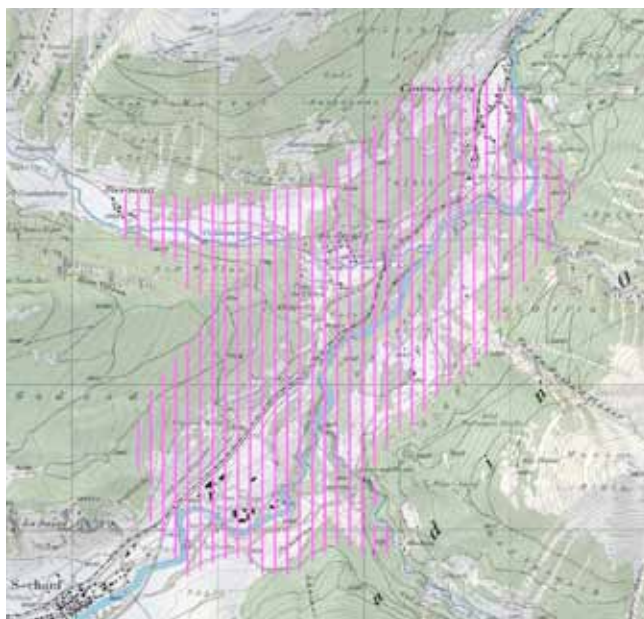
Long Final Pass dal Fuorn



Middle Final Susch-Lavin



Reserves S-chanf



8. Spectators

We will be offering several possibilities for spectators to enjoy the beautiful areas in the Engadine. After few JWOC-races you will have the chance to run in the footsteps of the JWOC champions: the controls will remain for individual training, and you may run the JWOC courses as a timed training.

After JWOC there is an outstanding chance to prolong your holidays: The Swiss Orienteering week (SOW 16th-23rd July) is an international multiday orienteering event that combines holidays with sport and a pinch of adventure. The SOW centre is in St.Moritz in the Upper Engadine, about 60km from Scuol.

See under www.swiss-o-week.ch



9. Organising Committee



Event Director
Technical Director
Communication

Senior Event Adviser (IOF)
Assistant Event Adviser (IOF)

National Controller

Simone Niggli
Matthias Niggli
Lukas Jenzer

Cesare Tarabocchia
János Sümegi

Christian Schneebeili, Urs Hofer

Contact

Simone Niggli
JWOC 2016
Luchliweg 5A
CH-3110 Münsingen
+41 31 721 52 68
simone.niggli@jwoc2016.ch