



Bulletin 2.

European Youth
Orienteering Championship
June 25-28, Cluj-Napoca, Romania

Content

Welcome	pg.2
Organizers	pg.4
About Cluj-Napoca	pg.5
Date	pg.6
Programme	pg.6
Classes and restrictions	pg.6
Punching system	pg.6
Terrains	pg.6
Maps	pg.6
Embargoed areas	pg.7
Training opportunities	pg.8
Event Center	pg.9
Accommodation and board	pg.9
Transportation	pg.10
Entry fee	pg.10
Entries	pg.10
Payment	pg.10
Visa	pg.11
Health insurance	pg.11
Public event	pg.11
Media	pg.11
Previous maps	pg.12



WELCOME TO EYOC 2015

Welcome to Cluj-Napoca, the European Youth Capital 2015!

I would like to congratulate you for organizing here, in Cluj-Napoca, in the heart of Transylvania, the European Youth Orienteering Championship 2015, a branded event which shows that Cluj-Napoca supports modern sports. The title of European Youth Capital 2015 is recognition of the fact that we are a dynamic city, a city of young people, where the mass sports and performance sports are at home. I am convinced that all the effort, determination and heart you put into organizing this event will completely pay off.

The policy of the Municipality is to support performance in all sports, in order to encourage their development. Moreover, Cluj-Napoca is the city with the best sports infrastructure in Romania, which demonstrates the importance we give to this specific field.

We are honored to host the European Youth Orienteering Championship 2015, an important sporting event for our community, through the example it gives to young people-choosing to spend as much time as possible in the open air.

Orienteering is an extremely interesting activity which helps develop essential skills that could prove useful in acquiring professional performance nowadays. Therefore, we consider ourselves privileged to host this major sporting event which brings with it the possibility of increasing the popularity of this sports among our youth.

Looking forward to seeing you in Cluj-Napoca!



EMIL BOC,
mayor of Cluj-Napoca



Dear friends of orienteering, athletes, coaches and officials!

We are honored that Romania will host EYOC 2015, an annual sporting event of a great importance for all sports federations and young Europeans.

Romania has the experience of organizing successfully several regional competitions in orienteering: four editions of the Latin Countries Cup, five Balkan Championships and SEEOC 2013, a sporting event which was appreciated by athletes, officials and representatives of IOF.

EYOC 2015 is on good hands, the experience and the professionalism of the organizers from Cluj-Napoca proven in many competitions WRE, are the guarantee of a good organization and quality of the competitions that awaits you, interesting technical races that will enrich your experience.

EYOC 2015 is a new opportunity for us and hosts from Cluj-Napoca to show you the Romanian hospitality, to know our culture and history, and human values of the Romanian people.

Cluj-Napoca, strong cultural and academic center of Romania, warm and welcoming city, designated the European Youth Capital 2015, is expecting you to go sightseeing, to make new friends and to acquire unforgettable memories.

We assure you of our friendship, fair play and we are waiting for you.



GHEORGHE DINU,
president of the Romanian
Orienteering Federation





ORGANIZERS

Romanian Orienteering Federation (FRO): <http://www.fro.ro>

Club Sportiv TranSilva Cluj: eyoc2015@orienteering.ro

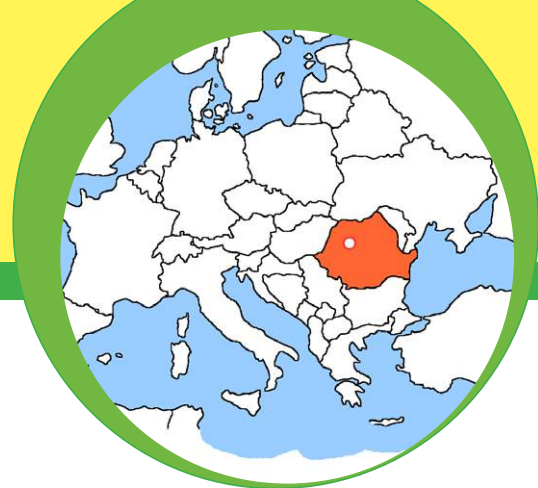
Other orienteering clubs and organizations from Cluj area.

The Organizing Committee:

- Chairman: Andrei Enyedi
- Event Director: Paul Cioban
- Event Secretary: Boglár Boér
- Mappers: Long Distance: Sándor Fey, Klára Fey
Relay: Sándor Fey, Klára Fey
Sprint: János Kuszálík
- Course planners: Long Distance: Attila Kiss
Relay: Gábor Simon
Sprint: János Kuszálík
- Timekeeping and results: Yana Sandieva
- Accommodation and Board: Attila Szikszai
- Transportation: Attila Szikszai
- Ceremonies: Kinga Kerekes

Contact for organizers: eyoc2015@orienteering.ro

- IOF Event Advisor: Wolfgang Poetsch (AUT) wolfgang-poetsch@aon.at
- IOF EA Assistant: Száva Zsigmond (HUN) zsigmondszava@yahoo.co.uk
- National Controller: Gligor-Alexandru Pavel (ROU), cluj_vointa@yahoo.com



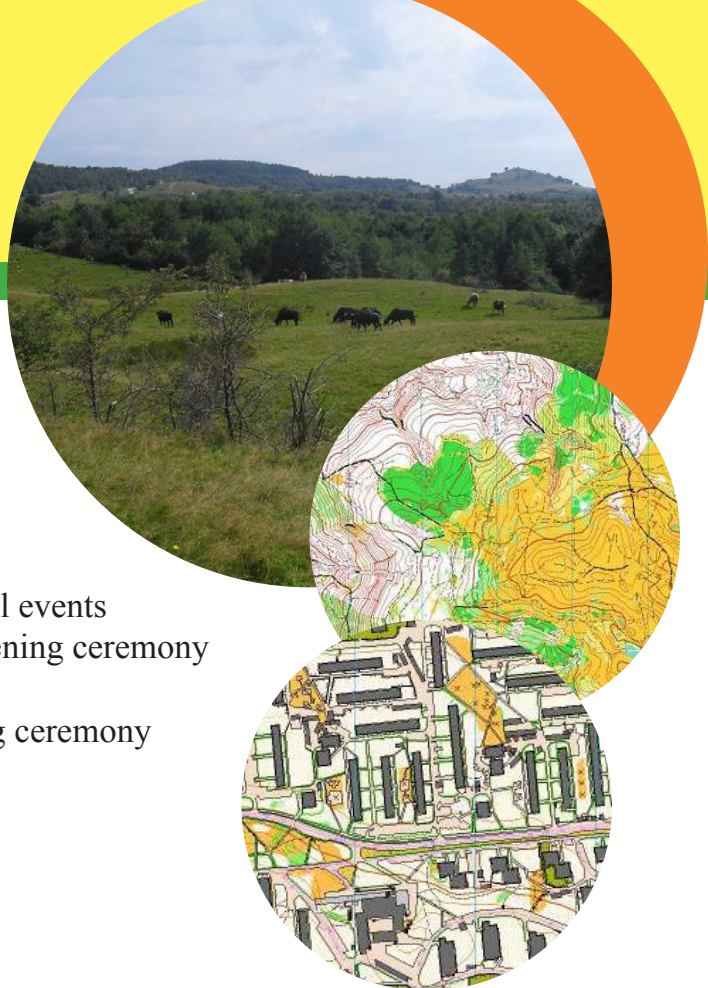
ABOUT CLUJ-NAPOCA

The town's history dates back to ancient times. The settlement was elevated to municipality during the reign of Emperor Hadrian (AD 117 – 138) under the name of Municipium Aelium Hadrianum Napoca and later to colony, around AD 180. The first documentary record of the city goes back to 1173 and refers to the settlement as Clus (in Latin “surrounded by hills”). Other names it had were Kolozsvár (in Hungarian) and Klausenburg (in German); the later was given after the Saxon colonists who settled in the City of Cluj in the time of Stephen V of Hungary. Its first Romanian name was Clus (often written Klus), later on Cluj, which in 1974 was changed to Cluj-Napoca. (source: <http://www.visitclujnapoca.ro/en/despre-cluj/istoria-cluj-ului>)

Ever since it was put on the map, the city has been home of different ethnic groups. At present, out of the over 300.000 inhabitants about 80% are Romanians, 16% Hungarians and around 4% belong to other ethnic minorities. Around 80.000 students from all over the world study and live in Cluj-Napoca, raising the cultural diversity of its population.

Cluj reunites different architectural styles, from medieval to contemporary ones, and it hosts a great variety of tourist attractions. See more about places to visit at <http://www.visitclujnapoca.ro/en/atractii-turistice/trasee-turistice/>.





DATE

25-28th June 2015

PROGRAMME

25th June - all day: accreditation, afternoon: model events

26th June - morning: long distance, afternoon: opening ceremony

27th June - morning: relay, evening: EYOC party

28th June - morning: sprint distance, noon: closing ceremony

CLASSES AND RESTRICTIONS

M16 – men born 1999 or later

W16 – women born 1999 or later

M18 – men born 1997 or later

W18 – women born 1997 or later

Each country may enter a maximum number of 4 competitors in each class and one relay team / class.

All participants must be full passport holding citizens of the country they are representing.

The competition will be organized in accordance with the valid rules for IOF Foot Orienteering Events and the Special Rules for European Youth Orienteering Championships.

PUNCHING SYSTEM

Electronic Sportident punching system will be used in all races.

Competitors may use their own SI cards or they can rent from the organizer (no additional costs).

TERRAINS

Long distance: between 400-700 m above sea level; hilly, many contour details, steep valleys, deciduous forest; variable runnability and visibility.

Relay: between 600-750 m above sea level; many contour details, deciduous forest, open and semi open lands; variable runnability and visibility.

Sprint: urban area, mostly paved or asphalt ground, very dense orienteering objects.

MAPS

Long distance: 1:10000/5m, according to ISOM;

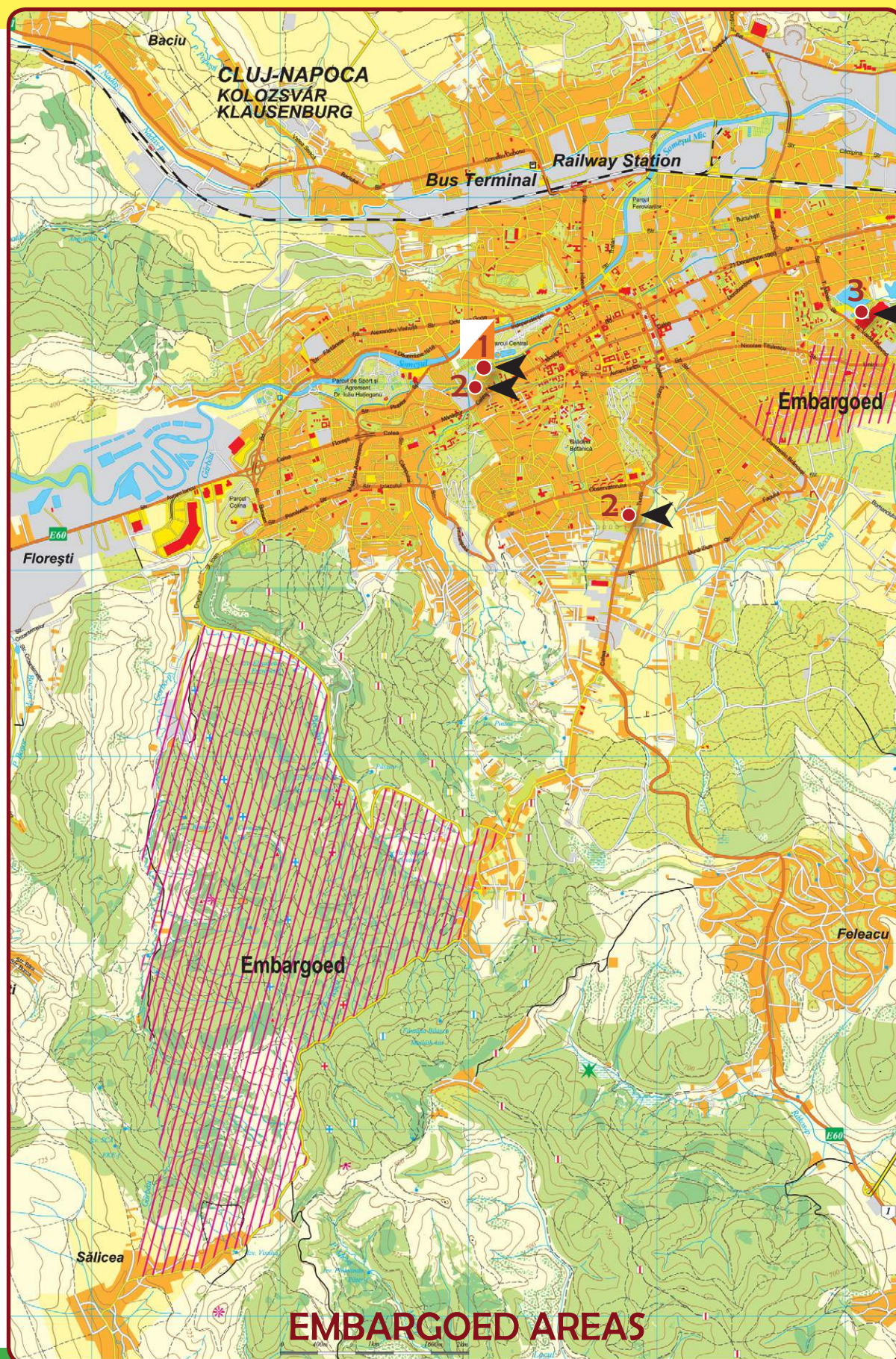
Relay: 1:10000/5m, according to ISOM;

Sprint: 1:5000/2m, according to ISSOM.

Previous maps from the areas are published at the end of the bulletin and also on the website.

EMBARGOED AREAS

It is forbidden to entry in the embargoed areas for potential team members, leaders and others, who through the knowledge of the terrain could influence results of the EYOC competition. Embargoed areas are shown on the following map:



1 - Event Center and Accommodation A2

2 - Accommodation B

3 - Accommodation A1



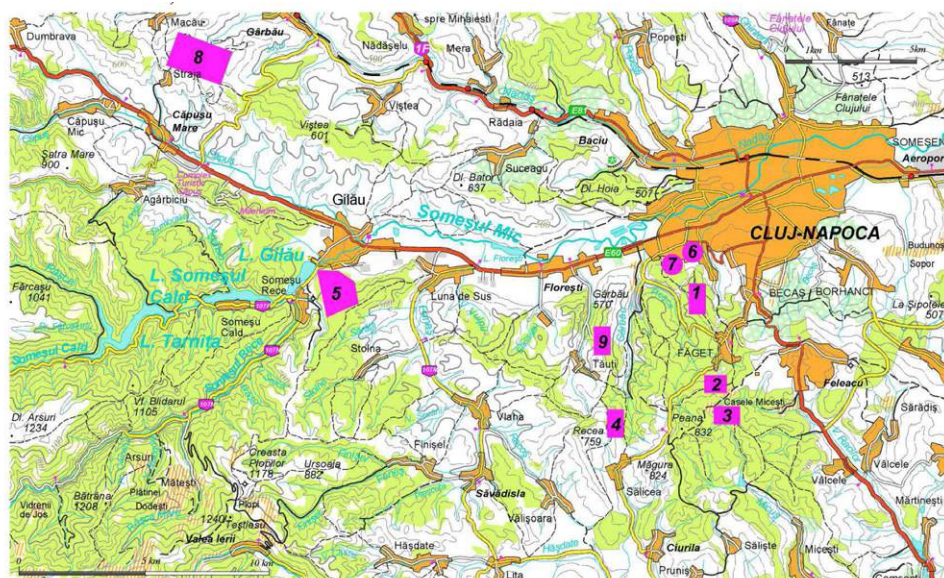
TRAINING OPPORTUNITIES

Official training session will be held on the week prior the EYOC2015, but anytime you are welcome to make your private training sessions.

Good opportunity for training is the Golden Compass Cup, a 2 day orienteering competition which will be held at 2-3rd May 2015 (<http://www.compass-cluj.ro>).

EYOC 2015 training areas:

- | | |
|----------------------------------|------------------------------|
| 1. Pater, 1:10.000/5m | 6. Manastur Est, 1:4.000/2m |
| 2. Fagetul mocirlos, 1:10.000/5m | 7. Manastur Vest, 1:4.000/2m |
| 3. Casele Micesti, 1:15.000/5m | 8. Straja, 1:10.000/5m |
| 4. Garbau Sud, 1:10.000/5m | 9. Garbau Ovese, 1:10.000/5m |
| 5. Gilau Santuri, 1:10.000/5m | |



 Training map

Training fees:

Laser printed 1:10.000, 1:4.000 and offset printed maps 1: 15.000 with or without courses	3 EUR/piece
OCAD map file, A4 format, 1:10.000 or 1:4.000	150 EUR/piece
OCAD map file, A4 format, 1:15.000	200 EUR/piece
EYOC training set package (all training OCAD maps)	1.000 EUR/package
Mounting of control points (with or without punching device) for organized trainings	1 EUR/ control point.

More information about the trainings, training maps, accommodation, food, other costs, suggestions, you can find on our website at

<http://www.eyoc2015.orienteering.ro/training-activities/>; contact person for trainings and all what are in connection with trainings is Tamás Bogya (email: training@orienteering.ro).



EVENT CENTER

Event Center is located at Hotel Sport, address: Cluj-Napoca, Aleea Stadionului nr.1, GPS coordinates: 46°46'3.00"N 23°34'26.00"E, same place with accommodation type A2.

ACCOMMODATION AND BOARD

● type A1 (100 places): Hotel Univers T, 3 star hotel, double rooms with private bathroom, air conditioning, LCD TV, internet, minibar, restaurant (<http://www.universt.ro>);

● type A2 (200-250 places): Hotel Sport, 2 star hotel, double or triple rooms with private bathroom, TV, internet, minibar, restaurant (<http://www.unita-turism.ro/ro/hotel/cluj-napoca/sport.html>).

● type B (100-150 places): student dormitories, 4-6 beds/room with common shower and WC on the corridor, internet

(<http://www.colegiuleconomic-cluj.ro/news-2/oferta-de-cazare-internat-exclusiv-de-fete>).

All meals will be taken at the accommodation where you are staying.

In case of higher request for a specific accommodation than the places we have, it will take into consideration the registration order. This is due to the restricted number of accommodation from different categories.

Extra night/day accommodation can be arranged with the following costs:

Extra accommodation with breakfast	
Type A1 double	23eur/night/person
Type A2 double	20eur/night/person
Type A1 single	37eur/night/person
Type A2 single	26eur/night/person
Extra accommodation without food	
Type B	10eur/night/person
Extra accommodation with fullboard	
Type A1 double	38eur/night/person
Type A2 double	33eur/night/person
Type A1 single	52eur/night/person
Type A2 single	39eur/night/person
Type B	25eur/night/person



TRANSPORTATION

The organizers will provide free of charge transportation from accommodation to model event, event arenas, to ceremonies, to party and to all other official activities.

It is allowed to use your own means of transportation.

The organizers will arrange upon request transportation from and to airports.

In case of Cluj Avram Iancu International Airport the cost of transportation is 10 eur/pers/2 way.

For other airports we shall organize transportation upon request. The cost depends on the number of solicitations.

The organizers can provide transportation to training areas for 10 eur/pers/2 way. The sprint training areas can also be reached by public transportation (bus, trolleybus or tram).

ENTRY FEE

190 eur/participant (competitor or official) with accommodation type A1;

175 eur/participant (competitor or official) with accommodation type A2;

150 eur/participant (competitor or official) with accommodation type B.

Entry fee includes:

- start fee for all three races and model event,
- accommodation and fullboard starting from 25th June dinner and ending on 28th June lunch,
- transportation from accommodation to event arenas and back,
- friendship party

ENTRIES

Deadline for general entries: **31st March 2015**.

The general entry form and payment details you will find on our website at:

<http://www.eyoc2015.orienteering.ro/general-entryform>

Deadline for nominative entries: **1st June 2015**.

Nominative entry forms you will find later also on our website.

Entries will be considered valid after all fees have been received.

PAYMENT

Payment must be made to the following bank account:

Club Sportiv TranSilva

Address: Cluj-Napoca, str Observatorului nr. 15/12

SWIFT: OTPVROBU

IBAN: RO53 OTPV 2010 0087 5253 EU01

OTP Bank Romania SA

Deadline for payment: **25th May 2015**.

On special request we shall accept payment in cash at arrival.



VISA

Citizens of the following European countries need to obtain visa for entering Romania: Armenia, Azerbaijan, Belarus, Georgia, Kazakhstan, Russia, Turkey and Ukraine. If an official invitation from the organizers is required for the visa, please contact us (eyoc2015@orienteering.ro).

For updated information you are advised to consult the site of Ministry of Foreign Affairs: <http://www.mae.ro/en/node/2040>

HEALTH INSURANCE

The Event Organizer will provide first-aid at each competition site. There will be an ambulance at each event arena.

Emergency care and major hospitals are within 20 minutes drive from each competition site.

Emergency phone number in Romania: 112

Cluj County Emergency Hospital: Spitalul Clinic Judetean de Urgenta, Cluj-Napoca, str. Clinicilor nr.3-5, tel.(+4)0264592771.

Whole list of hospitals from Cluj-Napoca:

<http://www.clujbusiness.ro/why-cluj/living-in-cluj/health>

The Event Organizer will not bear any responsibility related to the cost of medical services for participants. Each Federation is responsible for the health insurance of all their delegates.

PUBLIC EVENT

During the EYOC 2015 will be organized the 14th ed. of Transylvania Open, a 4 day orienteering event for all categories (MW10-80). Don't miss the opportunity to compete at the terrains of the EYOC 2015 and in the same time encourage your young compatriots.

All information about Transylvania Open you will find at: <http://www.transilva.ro>

MEDIA

Media representatives are welcome to EYOC 2015. Media services will be provided at the Event Center.

All media representatives are asked to register themselves at the organizers

(eyoc2015@orienteering.ro).

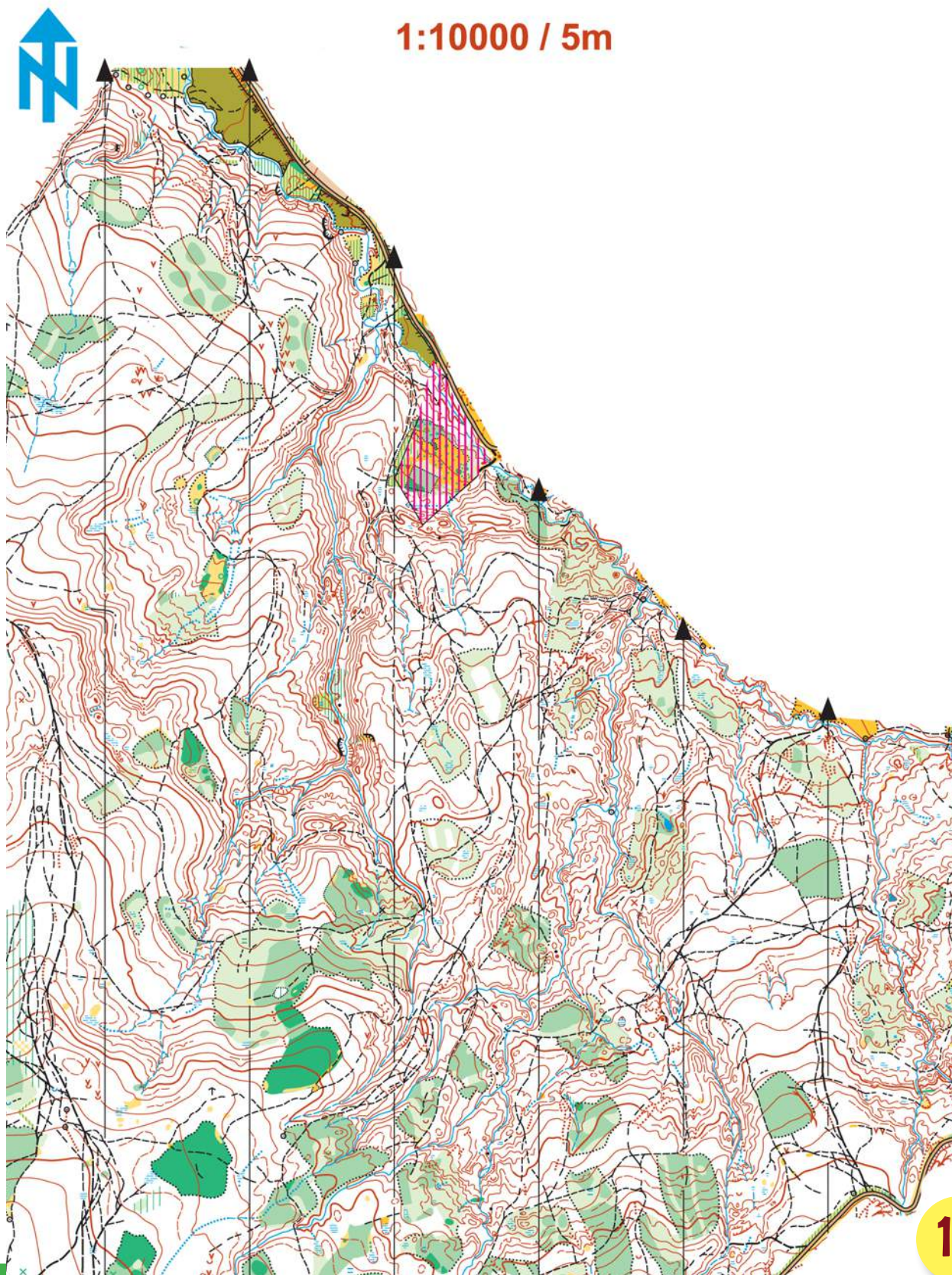
BULLETIN 3.

Will appear in June 2015.

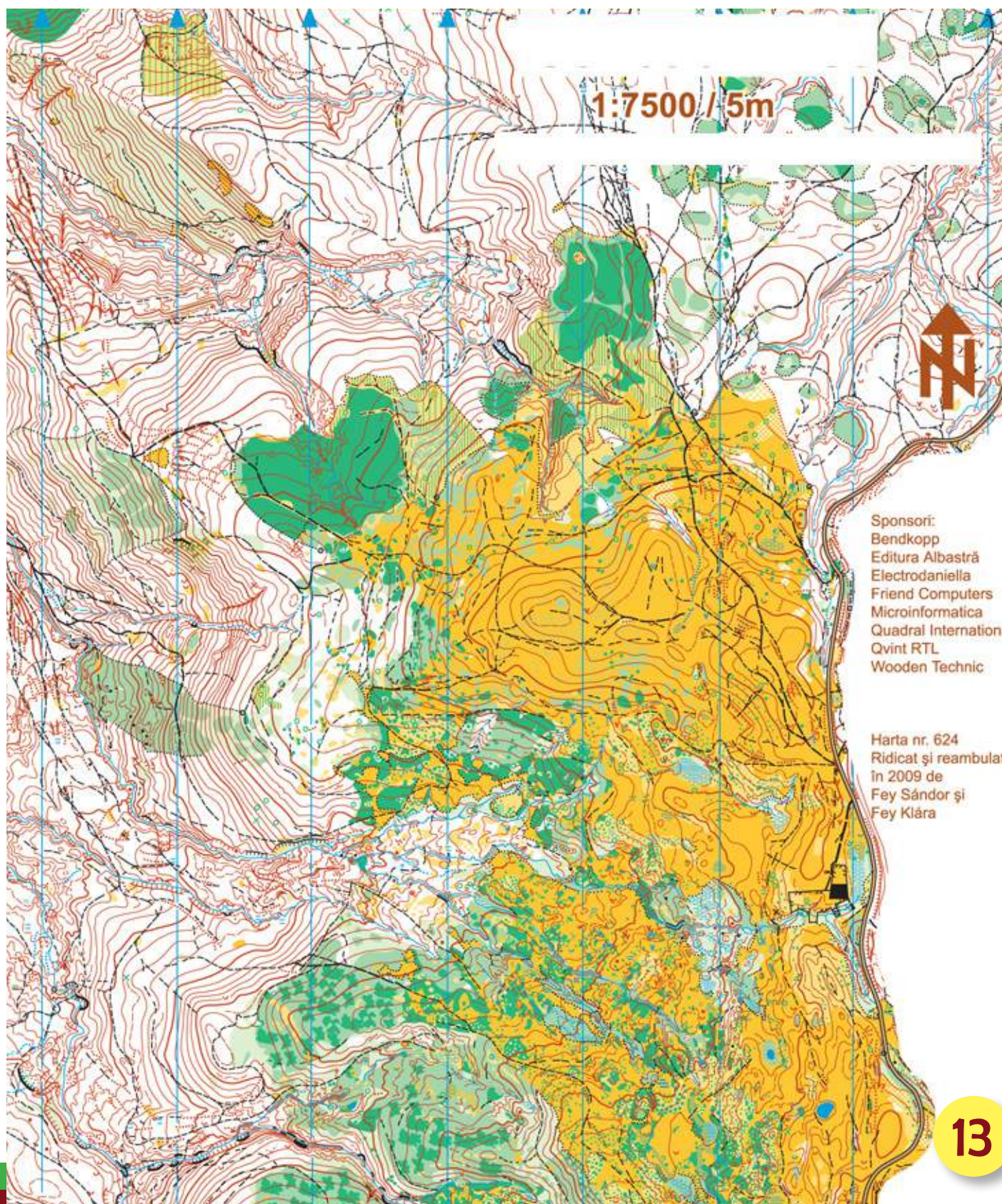


PREVIOUS MAP – Long distance:

1:10000 / 5m



12



Scara
1:5000 / 2m

