

# HUNGARIAN MTBO CUP 2015

1-3 may 2015 mtbo world cup, world masters series, hungarian cup & czech cup rounds

**MTBO** world cup  
2015 Várge sztes, Hungary

**IOF**  
MTB ORIENTEERING  
**WORLD CUP**



# BULLETIN 3

## Welcome

---

Dear Orienteering Friends,

It is our honour and pleasure to invite you to Várgeesztes to participate in the first round of MTBO World Cup, the first World Masters Series, and the Hungarian and Czech MTBO Cup. This event, one of the largest MTBO events in the World, also serves as the opening of the international MTBO season in Central Europe. We hope that you will enjoy both the sporting and the social side of this very special event.

*Miklós Juhász*  
*President*

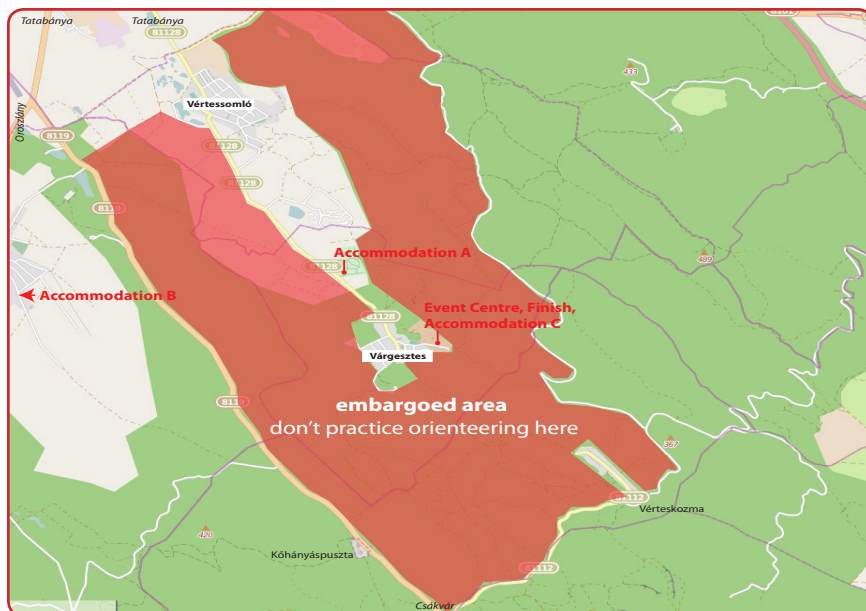
*Hungarian Orienteering Federation*

## Location

---

Várgeesztes is a village with a historic atmosphere surrounded by Vértes mountains, 75 km West of Budapest, 17 km South of Tatabánya. It lies alongside the North-Vértes Nature Conservation Area surrounded by dense forests. The castle built in the 14th century raises protectively above the village. It used to be one of the most significant member of the Vértesszőlős castle system. The castle of Várgeesztes is attractive for everybody who would like to enjoy peace, quietness, the beauties of nature, the clean “historic” air and the romantic atmosphere.





## How to get there

### Airports

The closest airport is Budapest Liszt Ferenc International Airport, 106 km from the Event Centre via M0 and M1 road. Driving on road M1 take the exit 61 toward Oroszlány/Tatabánya Centrum, then navigate through Tatabánya toward Oroszlány. You will get into Környe soon, in Környe turn left toward Várgezsztés. Transfer from the airport upon request: [info@mtbo.hu](mailto:info@mtbo.hu).

### Trains

The nearest railway station is in Környe, 10 km from the Event Centre. Trains leave from Budapest Keleti and Budapest Kelenföld railway station and you have to change the train in Tatabánya. From Környe by bike or other transport since there are no bike transportation facilities on the schedules buses from Környe to Várgezsztés. For the timetable visit [www.mavcsoport.hu/en](http://www.mavcsoport.hu/en).

## Travelling by car

This is the most appropriate way to approach the event's area, due to its remote location. Driving on road M1 take the exit 61 toward Oroszlány/Tatabánya Centrum, then navigate through Tatabánya toward Oroszlány. You will get into Környe soon, in Környe turn left toward Várgesztes.

Important: on the M0 and M1 and many other expressways in Hungary you have to pay toll, e-vignette in advance. The toll-system of the roads is a bit complicated, to get information about the toll roads visit [www.toll-charge.hu](http://www.toll-charge.hu). You can buy e-vignettes at the petrol stations or at the airport.

## Patrons of the event

---

Miklós Juhász	President of the HOF
Károlyné Rising	Mayor of Várgesztes
Sarolta Monspart	World Champion 1972
Tamás Zahorán	CEO, Villapark Várgesztes
Attila Péter	Marketing and Sales Manager, Villapark Várgesztes
Mihály Kocsis	CEO, Vértesi Erdő plc.

## Organising Committee

---

<i>President</i>	Miklós Mets
<i>Vice president</i>	Péter Vajda
<i>Course setters</i>	Miklós Mets, Ágoston Dosek, Dániel Marosffy
<i>IT Systems</i>	Tamás Jankó, Balázs Kovács, Sándor Ambrus, Dániel Marosffy
<i>Finances</i>	Katalin Ézsiás

<i>Coordinators</i>	Luca Óry
<i>Press contact</i>	Erzsébet Péntes
<i>Organizations</i>	Hungarian Orienteering Federation Hangya SZKE Budapest Orienteering Federation Funkwerk Hungary Ltd.

## Controllers

---

<i>IOF Senior Event Advisor</i>	Walter Dravetz
<i>National Controller</i>	Tibor Erdélyi

## Programme

---

30 April Thursday	World Cup team arrivals, model event
1 May Friday	World Cup mass start World Masters Series mass start Hungarian MTBO Cup, Czech Cup mass start
2 May, Saturday	World Cup middle World Masters Series middle Hungarian MTBO Cup, Czech Cup middle
3 May, Sunday	World Cup mix-relay Masters relay Open relay

## Event schedule

---

EC: Event Centre (in the Communitiy Centre of Várgesztes)

VP: Villapark

### **Wednesday, 29 April: Arrival**

17:00 – 21:00\* Event Office open in EC

19:00 – 21:00\* Dinner in VP

*\*time extension upon request*

### **Thursday, 30 April: Arrival, Model Event**

07:30 – 9:00 Breakfast in VP

10:00 – 21:00 Event office open in EC

12:00 – 16:00 Training

16:00 – 18:00 World Cup Model Event (map in EC)

18:00 – 21:00 Dinner in VP

19:00 – 20:00 Team leaders' meeting in VP

### **Friday, 1 May: Mass-start**

07:30 – 09:00 Breakfast in VP

08:00 – 16:00 Event office open in EC

11:00 World Cup Start men

11:15 World Cup Start women

14:00 First start of the Hungarian Cup, Czech Cup and Master categories' mass start (details in Bulletin 4)

18:00 - 19:00 Open MTBO Forum in VP  
19:00 - 19:30 Team leaders' meeting in VP  
19:00 - 21:00 GPS tracking show in VP  
20:00 Prize giving ceremony in VP  
18:00 - 21:00 Dinner in VP

### **Saturday, 2 May: Middle distance**

07:30 - 09:00 Breakfast in VP  
08:00 - 12:00 Event office open in EC  
10:00 - 14:00 World Cup Start  
14:00 - 18:00 Hungarian and Czech Cup, Seniors start  
19:00 - 21:00 GPS tracking show in VP  
19:00 - 19:30 Team leaders' meeting in VP  
20:00 Prize giving ceremony in VP  
20:00 - 23:00 free entry for the competitors to the wellness  
centre, party in VP

### **Sunday, 3 May: Relay**

07:30 - 09:00 Breakfast in VP  
08:00 - 10:00 Event office open in Finish Area  
9:00 World Cup start  
11:30 Start for all other categories  
14:30 Prize giving ceremony in Finish area



Race days in details will be published in Bulletin 4.

## **Team Leaders' meeting**

---

Team Leaders' Meeting will take place at 7pm in Villapark Várgesztes every evening preceding every World Cup competition day.

## **Competition rules**

---

- IOF MTBO Rules 2015
- International specification for MTB Orienteering Maps 2010
- Special rules for MTBO World Cup 2015

According to the rights of common and other official permissions of land use, off road riding as well as running taking along the bicycle in hand or on the back is not allowed in the whole area unless it is signed on the map and the terrain.

Competitors riding off road are responsible for any damage claimed by the landowners and/or handlers.

## **Classes, fees and entry regulations**

---

### **Individual events – 1 and 2 May**

#### World Cup

ME and WE with no age restriction.

Accreditation fee for the World Cup: EUR 60/competitor and team official.

Entry fee for World Cup: EUR 40/day.

The maximum entry per IOF member federation is 6 men and 6 women per event according to MTBO World Cup rules 2015.



Competitors who are representing a Federation shall have full passport holding citizenship of the country of that Federation. Two officials are accepted per team.

#### World Masters Series, Hungarian MTBO Cup, Czech Cup

MW 40, 45, 50, 55, 60, 65, 70, 75 (40/45, 50/55, 60/65 and 70/75 categories have the same courses)

Public event, no restriction on entry.

Entry fee: EUR 8/day

#### Hungarian MTBO Cup, Czech Cup

MW -14, 15-17, 18-20, 21EAB, M21C, Open Long, Open Short

Public event, no restriction on entry

Entry fee:

*Youth (-17)* EUR 6/day

*All other* EUR 8/day

### **Relay day - 3 May**

#### World Cup Relay

Mix teams with no age restriction. Each team must have 3 members, including at least one woman.

Entry fee per team: EUR 120/team.

The maximum entry per IOF member federation is 4 teams according to MTBO World Cup rules 2015.

#### Master Relay

M120, M160, X120, X160

Each team must have 3 members, each qualified for Master cat-

egories. The sum of the age of team members shall be at least 120 or 160. In X categories at least one team member must be woman.

Entry fee: EUR 30/team

### Open Relay

MW -20, 21-, Open

Each team must have 3 members.

Entry fee:

*Youth (-20)* EUR 18/team

*All other* EUR 30/team

All entries for Hungarian MTBO Cup and Open Relay carry a 50% late fee if submitted after the deadline (19 April for individual races and 1 May 8 pm for relay).

## **Entry method**

---

Online entry system is available on event website ([www.mtbo.hu/wc2015.php](http://www.mtbo.hu/wc2015.php)).

It is the same application used in World Cups 2010/11 and World Championships 2012. User accounts are still valid.

## **Time keeping system**

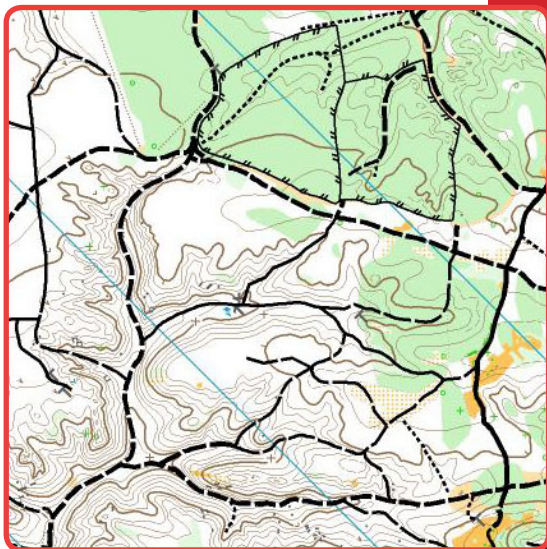
---

SI system will be used for all categories. The use of Air+ system is in abeyance. The organisers requested the use of SI Air+ system for Elite World Cup categories. Rental fee of the SI Air+ system is included in the entry fee.

Chip rent is 5 EUR/3days (free for World Cup races), lost chips cost 50 EUR/each.

## Terrain description

Mid-European deciduous forest with deep valleys, noticeable (25-100m) climbs and flat plateau area. Dense track network, mostly good rideability. Some tricky steep sections may challenge riders. In case of rainy weather prior to the event expect muddy roads, slippery wet clay on the slopes and on most tracks. Stones and thorns may occur.



## Embargoed areas

The area shown on the map around Várgesztes, is embargoed for all orienteering activities, unless specifically permitted by the Organizers.

This area is out of bounds for all potential World Cup and Hungarian and Czech MTBO Cup, and World Master Series participants and team members, including competitors, team leaders, coaches, doctors, escorts, and any other person who through their knowledge of the terrain may influence the result of the competitions.

Spelt out in details this means

- no organized orienteering activity may take place in the area,
- no training sessions may take place in the area,
- no one with potential connection to a team (athletes or others) may visit the area.

Copy of the most recent orienteering map of the area are accessible on the event website ([www.mtbo.hu/wc2015.php/maps](http://www.mtbo.hu/wc2015.php/maps)).

## Map details

---

Mass start 1:15,000 / 5m

Middle 1:15,000 / 5m

Relay 1:15,000 / 5m

Surveyed in 2014/2015

## Courses

---

### World Cup

Preliminary information on the courses:

	<i>Distance (km)</i>	<i>Ideal route (km)</i>	<i>Climb (m)</i>	<i>Controls</i>	<i>Refresh- ment points</i>	<i>Exp. winning time</i>
<i>Mass start M</i>	21.3	31.5	620	18	0	80
<i>Mass start W</i>	18.5	27,2	510	17	0	80
<i>Middle M</i>	14.1	21.0	310	17	0	50
<i>Middle W</i>	11.4	16.5	270	14	0	50
<i>Relay</i>	11.2 - 11.5	16.8 - 17.5	450-480	12	0	45

Course data for all other categories will be published in Bulletin 4.

## Start groups

---

Start groups allocation will be limited to World Cup middle distance. The allocation will be made according to the MTBO Competition Rules §12.5, 12.6, 12.7.

Red and Orange Group allocation is based on the IOF World

Ranking list as published 10 days before the event. All the other World Cup competitors shall be allocated into one of the three additional start groups (Early, Middle, Late) by their team leaders. Start group allocation should be submitted by 8pm 30 April (after the first Team leaders meeting). Riders not allocated into start groups will be allocated by the organisers based on World Ranking.

## Start bibs

---

World Cup participants will receive start bibs, numbered at first by the organisers for the Mass-start. Competitors will get new numbers for Middle distance (on a sticker) according to their Middle distance start order. Competitors who do not participate on the Middle will get a bib only for the Mass start and vice versa.

For all other competitors (Hungarian and Czech Cup, World Masters Series), there will be only one start bib with one number, for all 2 individual days for any single category.

Relay teams receive separate start bibs.

The start bib should be attached in front of the bike.

## GPS tracking

---

The top 10% and other competitors selected by the organisers based on various respects will carry a GPS tracking device at the World Cup races. The device is to be carried in the back pocket of the rider's jersey, and to be picked up in the start area 10-30 min. before the start.

Riders intending to ride in a jersey with no back pocket should request a harness to carry the GPS device from the organisers the day before.

The GPS tracks will not be displayed at the Finish area during the competition in order to keep the equal chance of the competitors.

On Friday and Saturday the GPS tracks will be shown in the Vilapark, before and after the prize giving ceremony. On Sunday the real time GPS tracking will be shown at the Finish area. All tracks will be available on the event website after the event.

## Training opportunities

---

### Prior to the World Cup

No official training camps will be organized before the World Cup, but the Organizers are happy to provide maps and help with organizing trainings upon request ([wcup2015@mtbo.hu](mailto:wcup2015@mtbo.hu)).

### Official training

Controls (with no SI boxes) will be placed in the training area from 12am to 6pm on Thursday (SI boxes will be set from 4 pm). Maps will be available at the event office. No registration is needed.

### Model event

Model event will be organized Thursday afternoon (30. April) between 4pm and 6pm, with using the controls of the training. The Model Event is accessible by bike from the Event Centre.

4pm is the start of the Model Event with free start times. The Model Event will be the part of the Thursday MTBO Series, a 15 round series of Hungarian MTBO mass events. Entry fee 600 HUF (2 Euro), but free for World Cup competitors. Maps and other equipments will be available at the event office.

## Event Centre

---

The EC is located in Várgesztes Faluház (Community Hall):

Arany János u. 55/B

N 47.474625, E 18.397696

The Cat C accommodation is in the building of the Event Centre as well as public toilets and showers for the competitors.

The registration, IT system and the event office will take place in the Event Centre. The finish area, the results and catering facilities will be located right at the Event Centre's building on an open area. Wi-Fi internet service will be available. Large playground for children can be found behind the building.

## **Prize-giving and social programmes venue**

---

The team leaders meeting, prize giving ceremony, GPS tracking show, as well as dinner on Thursday, Friday and Saturday evening will take place at Villapark Várgesztes. The restaurant will provide buffet-breakfast and dinner also for those participants, who are not accommodated there.

The Villapark can be found 1 km NW of Várgesztes (N 47.484590, E 18.387271), easily accessible by bike, car or on foot, following the main road out of the village. The event's venue is located in the centre of the Park, on the first floor of the building. Free entry for all the participants to the wellness facilities of the Villapark on Saturday evening. The Saturday evening non-official party is also hosted by the Villapark.

## **Accommodation**

---

Three different classes of accommodation are offered by the Organisers to ensure that all participants can find a place that suits their need and budget. Requests to be made with the entry on the event website. You can find detailed information about the accommodations at the "Lodging" menu of the website.

### **Cat A**

Várgesztes Villapark, 2 km from EC. Apartments with 4x2 bed units and lockable garage.

Prices for booking from 1 March to 20 April:



EUR 360 / apartment / 2 nights

EUR 100 / apartment / additional nights

### **Cat B**

Student hostel, Oroszlány, 15 km from EC. Shared shower facilities.

Price: 11 EUR / person / night

### **Cat C**

Gym hall / own equipment in Event Centre, Thursday through Saturday night. Shared shower facilities.

Price: EUR 3 / person / night

Please note that no campsite overnight stay is allowed in the Finish area due to restriction by the landowners. There are limited places for mobile homes but only upon request in advance.

## **Catering**

---

Half-board (breakfast and dinner) can be ordered at the Villapark for all participants. It costs 20 EUR / person / day. There is a possibility to order only breakfast (8 EUR) or dinner (14 EUR) too. You can order at the website with the entry.

A canteen with warm and a buffet with short meals and drinks will be available at the Event Centre. A cooking event will take place on Friday in front of the Event Centre, participants are welcome.

Important! 1st May is a national holiday in Hungary, all shops (supermarkets, hipermarkets, grocery stores) are closed, only one will be open (due to a special national law) in Várgesztes. This small local grocery (Gesztos Market, Arany János street 39.) will have extended opening hours during the whole event.

There are restaurants in the Villapark (1,5 km), Környe (10 km), Oroszlány (15 km) and Tatabánya (20 km).

## Media Services

---

Media representatives are cordially invited to come to Várgesztes to cover the World Cup races.

Registration for media entry should be made in email to [info@mtbo.hu](mailto:info@mtbo.hu) by 31 March 2015. Media facilities will be available only to registered media representatives.

## Entry permits to Hungary

---

Hungary is a full Schengen member state. The following IOF full member countries require visa to Hungary: Belarus, China, Chinese Taipei, Colombia, Kazakhstan, DPR Korea, Moldova, Mongolia, Russia, South Africa, Turkey, and Ukraine.

Visas have to be applied for at your nearest Hungarian embassy. The organizers will assist participants as required to obtain visas.

Please make sure that you allow for sufficient time (at least 3 months) for invitation letters and visa processing.

Please note that visa regulations are subject to change. Please double check your specific visa requirements.

## Local Weather

---

Early May in Hungary is characterized by mild sunny weather: 15-25C in the daytime, 5-10C in the night, with 7 hours of sunshine on average. Rain is not impossible.

## Transportation

---

All events are easily reachable by bike.

Transportation to and from Budapest Airport can also be ordered from the Organizers for a fee (special price for the event). Please inform the organizers in due time of any assistance you require with transportation.

Hertz offers preferential car rental rates for World Cup and Hungarian Cup competitors. Details are published on the web page of the event.

## Payments

---

Payments by World Cup participants must be made by bank transfer. Account details:

Funkwerk Ungarn GmbH

1081 Budapest, II. János Pál pápa tér 3.

Commerzbank: DE88 820400000490499100

SWIFT / BIC kód: COBADEFFXXX

Entries to the World Cup, accommodation, catering and transport will be accepted and confirmed after the arrival of the transfer. Deadline for transfers reaching the organizers is 31 March 2015.

Hungarian Cup, Czech Cup and World Masters Series participants may pay in cash upon registration.

## Fair play

---

Hungarian Cup and Czech Cup elite riders, whose results count towards their national cup races, ride the same elite courses as World Cup riders.

To ensure fair play to all participants, all maps of the World Cup, Czech and Hungarian Cup will be collected until the last start of the Hungarian and Czech Cup.

Helmet camera users are requested to declare their cameras at registration. Cameras or memory cards will be collected at the Finish until last start.

## Complaint, Protests and Jury

---

Any complaint shall be made in writing and submitted to the Organizers in the Finish of the day. The deadline for complaints is 1 hour from the finish of the competitor related to the complaint, unless there are valid exceptional circumstances explained in the complaint.

## Legal restrictions

---

Every participants takes part at his/her own risk. Organizers are not liable for any health problem or damage in the equipment.

Any kind of trading activity requires written permission by the organizers.

## Children are welcome

---

The organisers respect families and like children. There will be a child care arranged - a tent in case of good, an indoor place in case of bad weather – where somebodies will be looking after the children while fathers and mothers are racing. Moreover, a large public playground can be found right at the Finish area. The Vilapark also has baby and children facilities. Please write an e-mail to [info@mtbo.hu](mailto:info@mtbo.hu) about your child care request with the age of the children to make the organisers prepared.



## Important deadlines

---

### World Cup

<i>Accommodation booking</i>	20 April
<i>Entry of teams</i>	31 March
<i>Full payment</i>	31 March
<i>Request for transportation</i>	31 March
<i>Final modifications</i>	6 April

### Hungarian Cup, Czech Cup and World Masters Series

<i>Accommodation booking</i>	20 April
Individual entries	19 April
Relay entries	1 May

## Additional information

---

Erzsébet Péntes: [info@mtbo.hu](mailto:info@mtbo.hu), M: +36-20-978-9283

Updates and additional information:

<http://www.mtbo.hu/wc2015.php>