

# HUNGARIAN MTBO CUP 2015

mtbo world cup, world masters series, hungarian cup & czech cup rounds

**MTBO** world cup  
2015 Várgesztes, Hungary

**IOF**  
MTB ORIENTEERING  
WORLD CUP



**BULLETIN 2**

## Welcome

---

Dear Orienteering Friends,

It is our honor and pleasure to invite you to Várgesztes to participate in the first round of MTBO World Cup, the first World Masters Series, and the Hungarian MTBO Cup. This event, one of the largest MTBO events in the World, also serves as the opening of the international MTBO season in Central Europe. We hope that you will enjoy both the sporting and the social side of this very special event.

*Miklós Juhász*  
*President*

*Hungarian Orienteering Federation*

## Location

---

Várgesztes is a village with a historic atmosphere surrounded by Vértes mountains, 17 km South of Tatabánya. It lies alongside the North-Vértes Nature Conservation Area surrounded by dense forests. The castle built in the 14th century raises protectively above the village. It used to be one of the most significant member of the Vértesszőlős castle system. The castle of Várgesztes is attractive for everybody who would like to enjoy peace, quietness, the beauties of nature, the clean “historic” air and the romantic atmosphere.



## Patrons of the event

---

Miklós Juhász	President of the HOF
Károlyné Rising	Mayor of Várgesztes
Sarolta Monspart	World Champion 1972
Tamás Zahorán	CEO, Villapark Várgesztes
Attila Péter	Marketing and Sales Manager, Villapark Várgesztes

## Organizing Committee

---

<i>President</i>	Miklós Mets
<i>Vice president</i>	Péter Vajda
<i>Course setters</i>	Miklós Mets, Ágoston Dosek, Dániel Marosffy
<i>IT Systems</i>	Tamás Jankó, Balázs Kovács, Sándor Ambrus, Dániel Marosffy
<i>Finances</i>	Katalin Ézsiás
<i>Coordinators</i>	Luca Őry
<i>Press contact</i>	Erzsébet Péntes
<i>Organizations</i>	Hungarian Orienteering Federation Hangya SZKE Funkwerk Ungarn GmbH

## Controllers

---

<i>IOF Senior Event Advisor</i>	Walter Dravetz
<i>National Controller</i>	Tibor Erdélyi

## Program

---

30 April Thursday	World Cup team arrivals, model event
1 May Friday	World Cup mass start World Masters Series mass start Hungarian MTBO Cup, Czech Cup mass start
2 May, Saturday	World Cup middle World Masters Series middle Hungarian MTBO Cup, Czech Cup middle
3 May, Sunday	World Cup mix-relay Masters relay Open relay

## Competition rules

---

- IOF MTBO Rules 2015
- International specification for MTB Orienteering Maps 2010
- Special rules for MTBO World Cup 2015

Off track riding is not allowed. Bulletin #3 will list all cases where rules and specifications are modified.

## Classes, fees and entry regulations

### **Individual events – 1 and 2 May**

#### World Cup

ME and WE with no age restriction.

Accreditation fee for the World Cup: EUR 60/competitor and team official.

Entry fee for World Cup: EUR 40/day.

The maximum entry per IOF member federation is 6 men and 6 women per event according to MTBO World Cup rules 2015.

Competitors who are representing a Federation shall have full passport holding citizenship of the country of that Federation. Two officials are accepted per team.

#### World Masters Series, Hungarian MTBO Cup, Czech Cup

MW 40, 45, 50, 55, 60, 65, 70, 75 (40/45, 50/55, 60/65 and 70/75 categories have the same courses)

Public event, no restriction on entry.

Entry fee: EUR 10/day

#### Hungarian MTBO Cup, Czech Cup

MW -14, 15-17, 18-20, 21EAB, M21C, M40B, Open Long, Open Short

Public event, no restriction on entry

Entry fee:

*Youth (-17)*      EUR 6/day

*All other*          EUR 10/day

## Relay day - 3 May

### World Cup Relay

Mix teams with no age restriction. Each team must have 3 members, including at least one woman.

Entry fee per team: EUR 120/team.

The maximum entry per IOF member federation is 4 teams according to MTBO World Cup rules 2015.

### Master Relay

M120, M160, X120, X160

Each team must have 3 members, each qualified for Master categories. The sum of the age of team members shall be at least 120 or 160. In X categories at least one team member must be woman.

Entry fee: EUR 30/team

### Open Relay

MW -20, 21-, Open

Each team must have 3 members.

Entry fee:

*Youth (-20)*    EUR 18/team

*All other*        EUR 30/team

All entries for Hungarian MTBO Cup and Open Relay carry a 50% late fee if submitted after the deadline (19 April for individual races and 1 May 8 pm for relay).

## Time keeping system

---

SI Air+ system will be used for all Hungarian Cup, Czech Cup and World Masters Series categories.

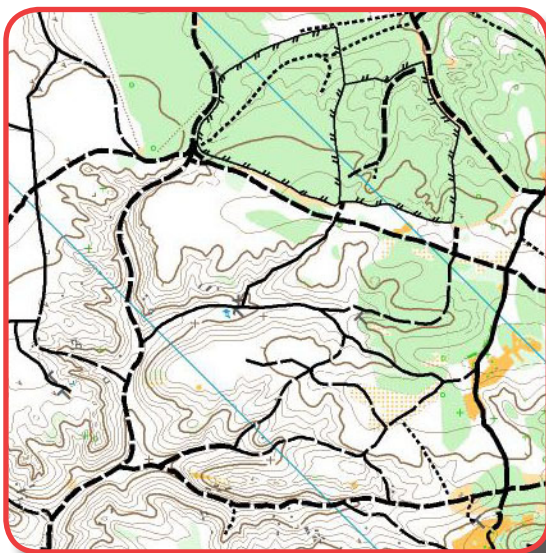
The organisers requested the use of SI Air+ system for Elite World Cup categories. Rental fee of the SI Air+ system is included in the entry fee.

Lost chips cost 70 EUR/each.

## Terrain description

---

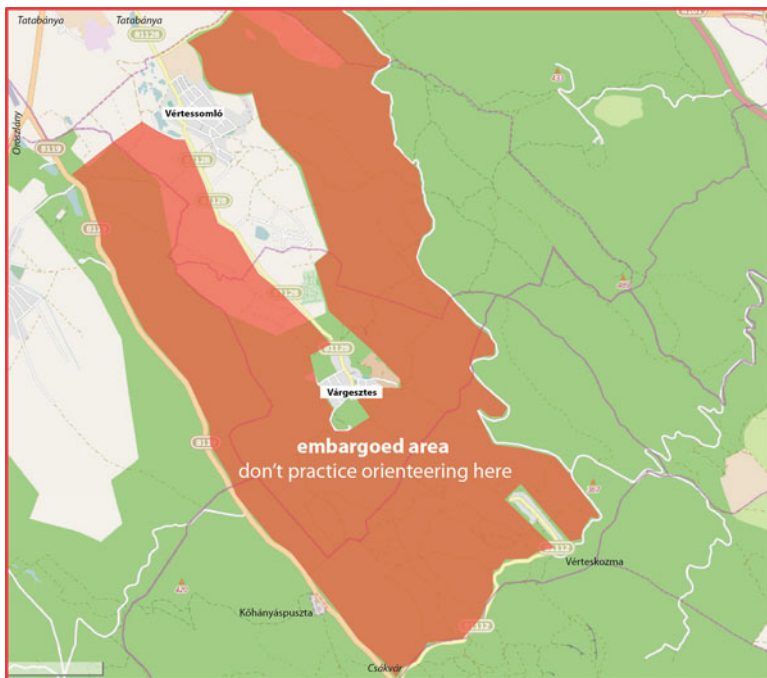
Mid-European deciduous forest with deep valleys, noticeable (25-100m) climbs and flat plateau area. Dense track network, mostly good ridability. Some tricky steep sections may challenge riders.





## Embargoed areas

The area shown on the map around Várgesztes, is embargoed for all orienteering activities, unless specifically permitted by the Organizers.



This area is out of bounds for all potential World Cup and Hungarian MTBO Cup participants and team members, including competitors, team leaders, coaches, doctors, escorts, and any other person who through their knowledge of the terrain may influence the result of the competitions.

Spelt out in details this means

- no organized orienteering activity may take place in the area,
- no training sessions may take place in the area,
- no one with potential connection to a team (athletes or others) may visit the area.



Copy of the most recent orienteering map of the area are accessible on the event website.

## Map details

---

Mass start     1:15,000 / 5m

Middle         1:15,000 / 5m

Relay            1:15,000 / 5m

Surveyed in 2014/2015

## Courses

---

Preliminary information on the courses:

### World Cup

		Expected winning time (min)	Distance (km)
Mass Start	M	80	20
	W	80	17
Middle	M	55	14
	W	55	12
Relay (per leg)	Mix	40-50	12

### Hungarian Cup and World Masters Series

Information on courses to be published early 2015.

## Training opportunities

---

No official training camps will be organized before the World Cup, but the Organizers are happy to provide maps and help with organizing trainings upon request.

All training requests should be sent to [training@mtbo.hu](mailto:training@mtbo.hu) address.

Model event will be organized Thursday afternoon accessible by bike from Várgesztes.

## Event Center

---

Várgesztes, Faluház

Arany János u. 55/B

N 47.474625, E 18.397696

Registration, team leaders' meeting and prize giving ceremony Friday and Saturday evening will take place at the Event Center.

## Accommodation

---

Two different classes of accommodation are offered by the Organizers to ensure that all participants can find a place that suits their need and budget. Requests to be made with the entry on the event website.

### Cat A

Várgesztes Villapark, 2 km from EC. Apartments with 4x2 bed units and lockable garage.

Prices for booking before 28 February:

EUR 320 / apartment / 2 nights

EUR 80 / apartment / additional nights

### Cat B

Student hostel, Oroszlány, 15 km from EC. Common shower facilities.

Price: 11 EUR / person / night

## Cat C

Gym hall / own equipment in Event Center, Thursday through Saturday night. Common shower facilities.

Price: EUR 3 / person / night

## Catering

---

Half-board (breakfast and dinner) can be ordered at the Villapark for all participants. It costs 20 EUR / person / day.

Cold and warm food will be available in the Finish area.

## Media Services

---

Media representatives are cordially invited to come to Várgesztes to cover the World Cup races.

Registration for media entry should be made in email to [info@mtbo.hu](mailto:info@mtbo.hu) by 28 February 2015. Media facilities will be available only to registered media representatives.

## Entry permits to Hungary

---

Hungary is a full Schengen member state. The following IOF full member countries require visa to Hungary: Belarus, China, Chinese Taipei, Colombia, Kazakhstan, DPR Korea, Moldova, Mongolia, Russia, South Africa, Turkey, and Ukraine.

Visas have to be applied for at your nearest Hungarian embassy. The organizers will assist participants as required to obtain visas.

Please make sure that you allow for sufficient time (at least 3 months) for invitation letters and visa processing.

Please note that visa regulations are subject to change. Please double check your specific visa requirements.

## Local Weather

---

Early May in Hungary is characterized by mild sunny weather: 15-25C in the daytime, 5-10C in the night, with 7 hours of sunshine on average. Rain is not impossible.

## Transportation

---

All events are easily reachable by bike.

Transportation to and from Budapest Airport can also be ordered from the Organizers for a fee. Please inform the organizers in due time of any assistance you require with transportation.

## Payments

---

Payments by World Cup participants must be made by bank transfer. Account details:

Funkwerk Ungarn GmbH

1081 Budapest, II. János Pál pápa tér 3.

Commerzbank: DE88 820400000490499100

SWIFT / BIC kód: COBADEFFXXX

Entries to the World Cup, accommodation, catering and transport will be accepted and confirmed after the arrival of the transfer. Deadline for transfers reaching the organizers is 15 March 2015.

Hungarian Cup, Czech Cup and World Masters Series participants may pay in cash upon registration.

## Entry method

---

Online entry system is available on event website ([www.mtbo.hu/wc2015.php](http://www.mtbo.hu/wc2015.php)).

It is the same application used in World Cups 2010/11 and World Championships 2012. User accounts are still valid.

## Important deadlines

---

### World Cup

<i>Preliminary entries</i>	28 February
<i>Accommodation booking (Cat A)</i>	28 February
<i>Entry of teams</i>	15 March
<i>Full payment</i>	15 March
<i>Request for transportation</i>	15 March
<i>Final modifications</i>	6 April

### Hungarian Cup, Czech Cup and World Masters Series

<i>Accommodation booking (Cat A)</i>	28 February
Individual entries	19 April
Relay entries	1 May

## Additional information

---

Erzsébet Péntes: [info@mtbo.hu](mailto:info@mtbo.hu), M: +36-20-978-9283

Updates and additional information:

<http://www.mtbo.hu/wc2015.php>