



IOF World Ranking Event for M21E/W21E

WRE Middle Distance

24 February 2017



in conjunction with

2017 Israel Open Championships

24-25 February 2017

BULLETIN 2

Event Organizers

Israel Orienteering Association

Event Director Ziv Noiman
Day 1 (WRE) Coordinator Noam Ravid, ASA Tel Aviv Orienteering Club
Day 2 Coordinator Enrique Zezynski, Lev Hasharon Orienteering Club

IOF Event Advisor

Yoram Shechori

Jury

Eytan Amiaz (ISOA), Noam Ravid (ISOA), Enrique Zezynski (ISOA)

Contact

Israel Orienteering Association (IOA) office@nivut.org.il
Kibbutz Ein Hahores, 38980, Israel
Telephone: +972-4-612-7714 | (WRE): +972-924-6327

Event Info



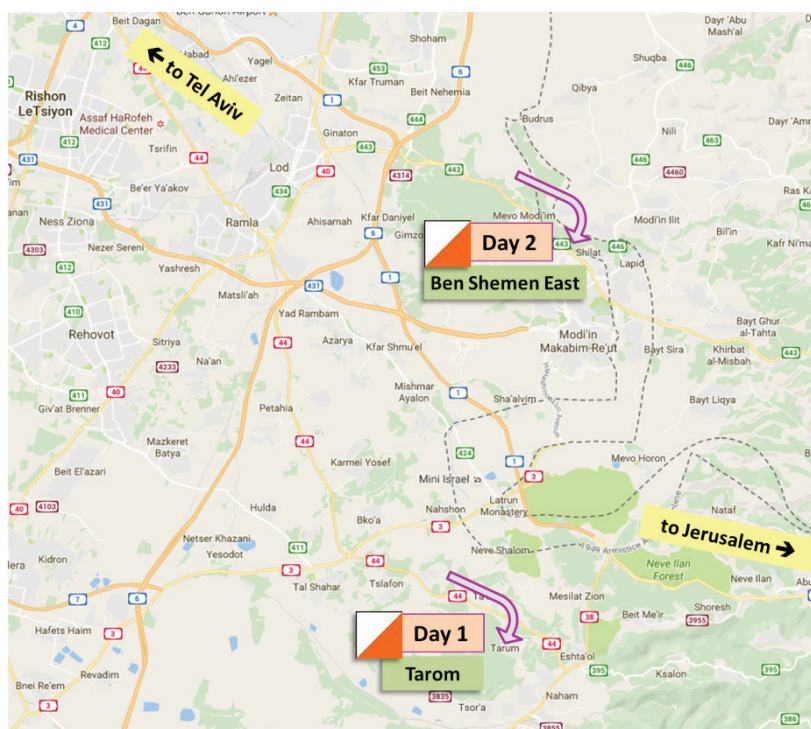
Event web page: <http://israelorienteering.org/israel-open-championship-2017>

[Israel Orienteering on Facebook](#) for the latest news, updates, photos and links.



The 2017 Israel Open Championships will be held in central Israel. Both venues are located 30-50 km from either Jerusalem and Tel Aviv.

Venues



The WRE event will be held in conjunction with the 2017 Israel Open Championships. The course for the Elite classes will be the same for both the WRE and the Open event. The overall standing in the Israel Open Championships will be determined by the two-day total.

Program

Friday, 24 February – Israel Open – WRE Middle – Taron

9:00 – First start

Start Lists will be published on Thursday 25 February on ISOA websites.

Saturday, 25 February – Israel Open – Ben Shemen

9:00 – First start

12:30 – Award ceremony for WRE/ Israel Open Championships – All Categories

Punching System

SPORTident electronic punching system will be used. Competitors who have SI cards can use their own cards. SI cards can also be rented from the organizers.

Map & Course Information

Map Scale	1:10,000
Contour Interval	5 m
Winning Time	35 minutes
Distance Arena to Start	200 m
Start Times	9:00-11:00
Course Closing	12:00

**WRE
Classes and Courses
Wining Times**

Class	Distance	Climb (m)	Controls	Water Points	WRE Control Description Dimen. (cm)
M21E	5.0	210	23	2	15x5
W21E	4.5	195	19	2	15x5

Complaints/Protests

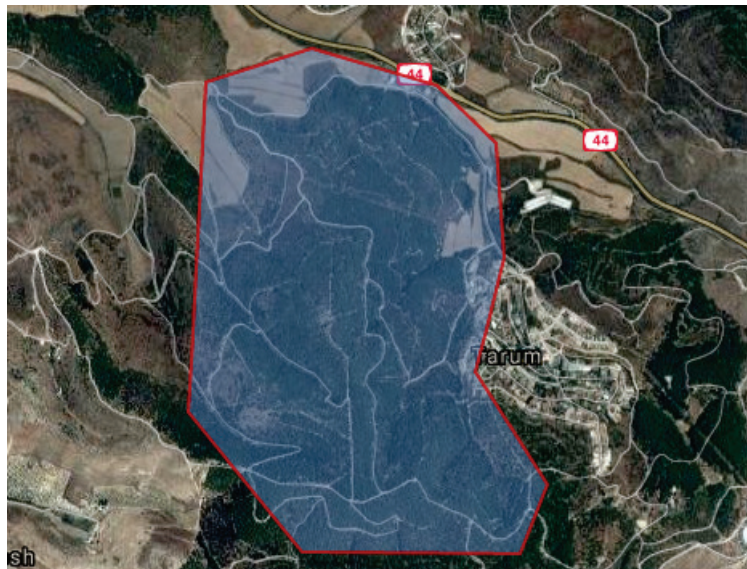
Any **complaint** should initially be discussed as soon as possible after the problem is identified with the Event Organizer in the arena. If this does not resolve the issue then a formal written complaint should be submitted to the Day Organizer using the IOF Complaint/Protest form. The time limit for making a complaint is 1 hour after the competitor has finished their run.

The Organizer will provide a written decision on the Complaint.

In the case of a World Ranking Event, **protests** must be made to the IOF Event Adviser or a Jury member within 15 minutes of the Complaint adjudication.

Entry to the embargoed areas is prohibited for potential team members, leaders and others, who through the knowledge of the terrain could influence results of the WRE and/or Israel Open competition.

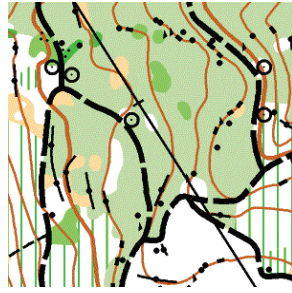
**Embargoed Area -
Tarom - WRE**



**Embargoed Area –
Ben Shemen**



Maps and Terrain

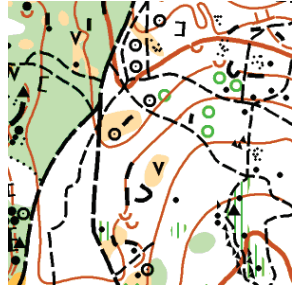


Map: Tarom (2016) WRE

Scale: 1:10000, 5m contours.

Map maker: Petr Matula

Mixed natural and planted pine/fir forests with a large network of paths and trails. Some steep hills. Some areas of heavy undergrowth and some areas with numerous rock features.



Map: Ben Shemen (2015)

Scale: 1:10,000, 5m contours.

Map maker: Petr Matula

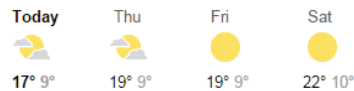
Mixed natural and planted pine/fir forests with a large network of paths and trails. Some semi-open areas with low vegetation. Moderately hilly. Scattered rock features and some man-made ruins.

Transportation

No official transport will be offered. International competitors are advised to hire a car from a recognized car rental company.

Weather Forecast

You can expect to enjoy sunshine and comfortable temperatures during the championships.



Clothing

There are no clothing regulations for orienteering, and competitors may wear the clothing of their choice. The organizers recommend that competitors wear long trousers/leg protection.

Health Services

The organizer will coordinate healthcare services for participants. The Event Organizer will provide first-aid at the event center and at each competition site. Emergency care and major hospitals are within a 20-30 minute drive from each of the competition sites.

The Event Organizer will not bear responsibility related to medical costs for participants. Participants are responsible for their own insurance.

WRE Registered Entries

Name	Organisation	Federation	SI Number
Asaf Avner	ISR OC Galilee	Israel	8213128
Stav Barkai	ISR OC Lev Hasharon	Israel	2071016
Guy Sabo	ISR OC Emek Hefer	Israel	8634938
Zef Segal	ISR OC Tel Aviv ASA	Israel	2071293
Ronen Shurer	ISR OC Galilee	Israel	2071071
Aram Yakoby	ISR OC Hasharon	Israel	2071239
Nir Yasur	ISR OC Jezreel	Israel	8291968
Nitsan Yasur	ISR OC Jezreel	Israel	2071022
Anya Grinberg	ISR OC Tel Aviv ASA	Israel	2071129
Keren Ziv	ISR OC Tel Aviv ASA	Israel	