



# EGK OL-Weltcupfinal 2017

GRINDELWALD 29.9.-1.10.2017



## Bulletin 1+2



Presenting Partner



Main Sponsors



Co-Sponsors



Host Region



on behalf of



# WELCOME TO GRINDELWALD

Dear athletes, ladies and gentlemen

Grindelwald and the organizing team are looking forward to the EGK OL-Weltcupfinal and to seeing you all in the wonderful surroundings of the worlds famous Eigernordwand and Grindelwald! The region has hosted several big orienteering competitions, e.g. a stage of Swiss 5-days in 1980 and the Swiss Long distance Championships in 1998. All three competition areas were never mapped before, so we offer you a real challenge in unknown terrain.

We offer you an attractive package price including entry fee, starting fee for all races and accommodation with halfboard. We hope to welcome many runners from countries all over the world in the Swiss mountains!

The last years, Brigitte Grüniger Huber was the event director and she did an incredible and very successful job. Thank you, Brigitte!

It is a great honor for me, but also a pressure to take over this event from her. I'm looking forward and hope to master the challenge.

You are warmly welcome to Switzerland!

Matthias Niggli  
Event Director EGK OL-Weltcupfinal

## 1. ORGANISATION

### Organising Committee

Matthias Niggli	Event Director
Simone Niggli	Technical Director
Martin Oppliger	Start
Markus Hitz	Finish, Arena, Infrastructure
Daniel Leibundgut	Results, IT Services
A.Wenger/L.Schubnell	Live-Production
Severin Furter	Media
M.Schenker/M.Probst	National competitions

### Event Advisors

Eike Bruns	IOF Senior Event Advisor, GER
Ulu Aeschlimann	National Event Advisor, SUI
Jost Hammer	National Event Advisor, SUI

## 2. EVENT CENTRE

The Event Centre is located at the Sport Centre of Grindelwald.

Please note that it will be very difficult to travel home on Sunday evening as the competition is hold in the afternoon. So we booked all accommodations until Monday to have a nice party on Sunday evening. Take your time to stay one more night in the Swiss mountains, you will not regret it.

## 3. PROGRAMME

### Wednesday, 27 September 2017

Arrival of the teams	
Event Centre opens	13:30-17:00
Free training	14:00-18:00

### Thursday, 28 September 2017

Event Centre opens	09:00-12:00
Free training	10:00-18:00
Kids meet World Champions	16:00-17:00
Event Centre opens	17:00-18:00
Team Officials' Meeting	17:30-18:00

### Friday, 29 September 2017

EGK OL-Weltcupfinal Long	11:00-17:00
First start approx.	11:00
Last start	15:00
Price giving ceremony	16:45

### Saturday, 30 September 2017

National public race	10:00-14:00
EGK OL-Weltcupfinal Middle	12:30-17:00
First start approx.	12:30
Last start	15:45
Price giving ceremony	16:45

### Sunday, 1 October 2017

National public race	10:00-14:00
EGK OL-Weltcupfinal Relay	14:00-15:30
Start sprint relay	14:00
Price giving ceremony	15:15
World Cup party	19:00-



## 4. COMPETITIONS

### 4.1 EGK OL-Weltcupfinal Long

Format	Long distance, individual start, 3 min. start interval
Map	Grindelwald Nodhalten, 1:15'000, 5m, by Urs Steiner
Terrain	Orienteering terrain between 1300 and 1900m above sea level. Mixture of coniferous forest and semi-open to open alpine pasture. Hill side with moderate to steeper slopes. Some forest roads and hiking trails, no or moderate vegetation on the ground, rich in contour and rock details.
Forms	Mountainside with moderate to steeper slopes.
Vegetation	Alpine forest with coniferous forest. No or moderate ground vegetation, partly semi-open and open terrain, alpine pasture.
Runability	Mostly good, some blueberries and alpine roses. Occasionally rocky ground.
Visibility	Good.

### 4.2 EGK OL-Weltcupfinal Middle

Format	Middle distance, individual start, 2 min. start interval
Map	Grindelwald Dirrenberg, 1:10'000, 5m, by Urs Steiner
Terrain	Orienteering terrain between 1000 and 1400m above sea level. Coniferous forest with small semi-open to open alpine pasture. Hill side with moderate to steeper slopes. Some forest roads and hiking trails, no or moderate vegetation on the ground, rich in contour and rock details. Short urban area near the finish.
Forms	Mountainside with moderate to steeper slopes.
Vegetation	Alpine forest with coniferous forest. No or moderate ground vegetation, partly semi-open and open terrain, alpine pasture.
Runability	Good, occasionally rocky ground.
Visibility	Good.

### 4.3 EGK OL-Weltcupfinal Sprint Relay

Format	Sprint relay according to IOF-rules.
Map	Grindelwald, 1:4'000, 2m, by Beat Imhof
Terrain	Urban terrain in a touristic village with side streets and narrow footpaths. Some passages on lawns.
Forms	Mostly slopes with varying steepness.
Traffic	Local traffic in some of the streets.

## 5. COURSES (PRELIMINARY)

### EGK OL-Weltcupfinal Long

Women	9.2km/410m climb, winning time 70'
Men	11.7km/740m climb, winning time 85'

Course setters: Bruno Haldemann and Urs Steiner

### EGK OL-Weltcupfinal Middle

Women	4.6km/210m climb, winning time 35'
Men	5.4km/280m climb, winning time 35'

Course setters: Bruno Haldemann and Urs Steiner

### EGK OL-Weltcupfinal Sprint relay

4 legs	2.5-3km/100m climb, winning time per leg 13-15'
--------	--

Course setters: Irene and Michael Eglin

## 6. TRAINING

Middle/Long: Training map with controls in the region of Grindelwald, 1:10'000 and 1:15'000, 2017 by Urs Steiner.

Sprint relay: Training map in a part of the village of Grindelwald, 1:4000, 2017 by Beat Imhof.  
No controls.

Maps will be given to all entered runners and coaches at the Event Centre.

## 7. EMBARGOED AREAS

The marked competition areas around Grindelwald are embargoed areas. For competitors, team officials and others who, through knowledge of the terrain or the competitions, may influence the results of the competitions, it is prohibited to enter the embargoed areas.

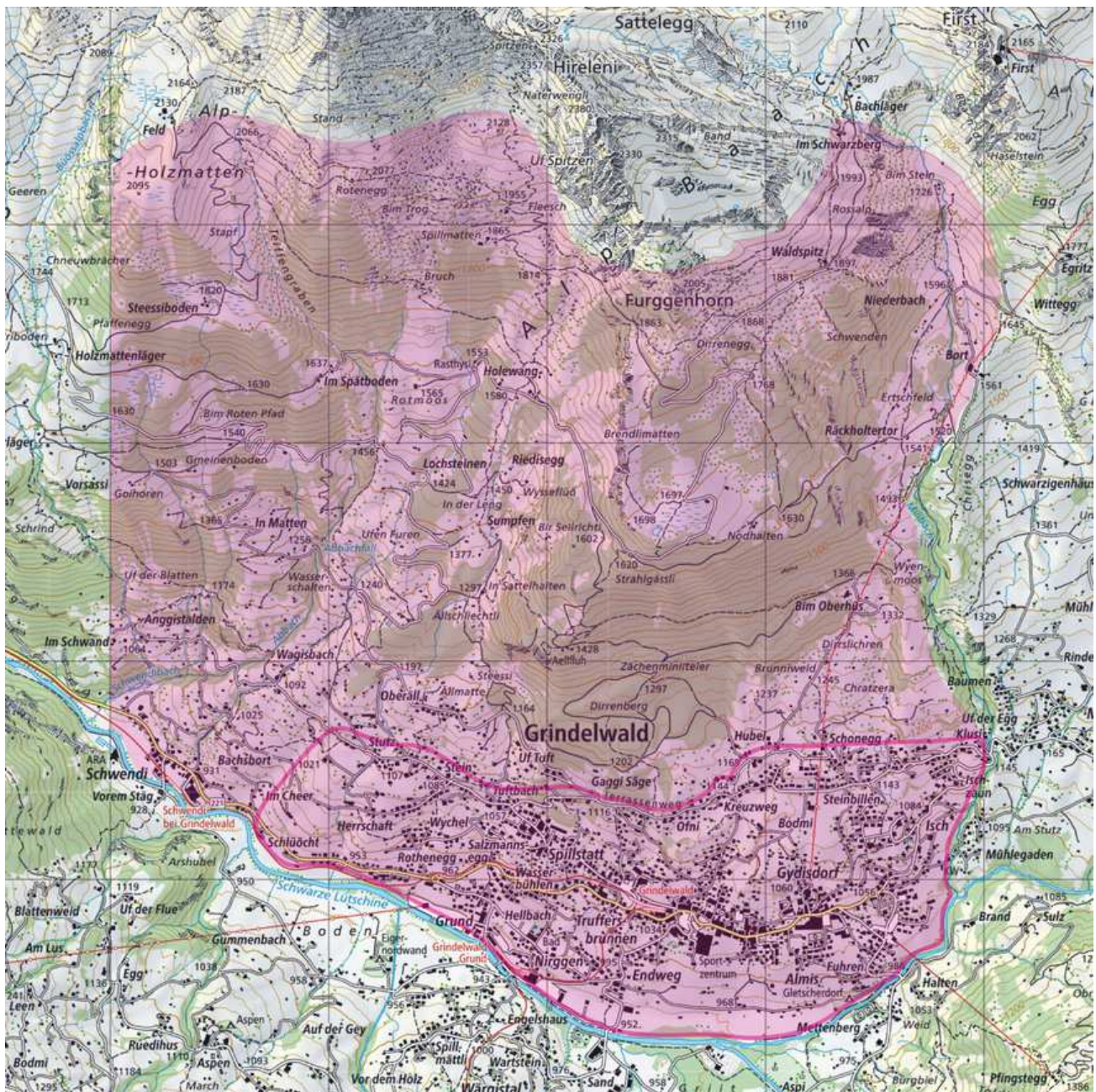
Special rule for the stay in Grindelwald (village, specially marked on the map) during the following periods:

### Saturday, 23 September 2017 – Sunday, 1 October 2017

- It is allowed to stay as a tourist, e.g. for sight-seeing, visiting a restaurant, shopping in the village of Grindelwald.
- It is prohibited to stay there with a map, to run, to jog, to orienteer through the embargoed area or to test route choices.

These embargoed areas are valid until the day prior to the competition. Special rules by the organizer will be valid at the day of competitions (see Bulletin 4).





## 8. COMPETITION RULES

The Competition Rules for IOF Foot Orienteering Events 2017, valid from 1 January 2017 apply. Participation restrictions, classes and qualification system will follow the Special Rules for the 2017 World Cup in Orienteering and the Special Rules for the 2017 Relay World Cup in Orienteering.

## 9. PUNCHING SYSTEM

The punching system used is SPORTident Air+. SIAC-Cards will be provided by the organizer.

## 10. ACCOMMODATION

We offer you two accommodation packages with halfboard with the youth hostel and the hotel package until 31 May. If you order this package, we will inform you about room sizes and allocation of the hotels. Teams entering with the competition package have to book their own accommodation. You may choose an accommodation on [www.grindelwald.ch](http://www.grindelwald.ch).

If you need any help, don't hesitate to contact the Event Director.



## 11. ENTRY

### 11.1 Entry deadlines

#### Team size deadline:

The following information shall be sent to the organiser:

- Number of competitors (men and women)
- Number of team officials (men and women)
- Number of teams or single runners for the Sprint-Relay
- Number of beds in accommodation
- Team manager: Name, address, phone, fax, e-mail

Please use the online entry system Eventor (link on our website, available from March 2017).

Team size deadline: **31 July 2017**

#### Team names deadline:

The name entry has then to be done no later than 19 September 2017 by fill in the forms in the online entry system Eventor with the following information:

- All competitors and team officials: family name, first name, nation, sex, year of birth, IOF ranking ID,
- IOF officials: family name, first name, address, IOF function.

Note, that name entries can only be accepted if a team size entry was done by the national federation by 31 July!

Please use the online entry system Eventor (link on our website, available from March 2017).

Team names deadline: **19 September 2017**

### 11.2 Entry fees until 31 May 2017

#### Youth hostel package (100 beds):

CHF 150.- for competitors and team officials.

This includes:

- Starting fee for all 3 races for competitors
- Training maps, competition maps
- Accommodation in 4- or 6 bed rooms from Wednesday, 27 September to Monday, 2 October (5 nights)
- Halfboard in the youth hostel (without drinks at dinner)
- Local transport

#### Hotel package (100 beds):

CHF 300.- for competitors and team officials

This includes:

- Starting fee for all 3 races for competitors
- Training maps, competition maps
- Accommodation in hotel rooms (2-4 beds per room) from Wednesday, 27 September to Monday, 2 October (5 nights, tourist tax payable separately)
- Halfboard in the hotel or a restaurant nearby (without drinks at dinner)
- Local transport

### 11.3 Entry fees until 31 July 2017

#### Competition package:

CHF 100.- for competitors and CHF 50.- for team officials

This includes:

- Starting fee for all 3 races (competitors only)
- Training maps, competition maps

### 11.4 Payment

Youth hostel and hotel packages must be paid by 31 May 2017. The competition package must be paid by 31 July 2017.

Please note that all bank charges must be paid by the applicant.

Please note, that we will add a late payment fee of CHF 20.- per person for late payment!

Bank	PostFinance, Nordring 8 CH-3003 Bern,
Account Nr.	87-717328-8
IBAN	CH75 0900 0000 8771 7328 8
SWIFT Code	POFICHBEXXX
Clearing Nr.	09000
To the credit of	Swiss Cup, CH-8712 Stäfa

## 12. PRIZE MONEY

A total prize fund of CHF 11'750.- will be awarded from the event organiser to the best men and women in both individual competitions and to the best teams in Grindelwald:

#### EGK OL-Weltcupfinal Event 9 and 10:

1 <sup>st</sup> place:	CHF 1000.-	4 <sup>th</sup> place:	CHF 200.-
2 <sup>nd</sup> place:	CHF 700.-	5 <sup>th</sup> place:	CHF 150.-
3 <sup>rd</sup> place:	CHF 350.-	6 <sup>th</sup> place:	CHF 100.-

#### EGK OL-Weltcupfinal Sprint Relay:

1 <sup>st</sup> place (per team):	CHF 1000.-
2 <sup>nd</sup> place (per team):	CHF 500.-
3 <sup>rd</sup> place (per team):	CHF 250.-

A total prize fund of EUR 7000.- will be awarded from the IOF to the best men and women in the World Cup overall ranking 2017:

IOF World Cup overall ranking 2017:

1 <sup>st</sup> place:	EUR 2000.-
2 <sup>nd</sup> place:	EUR 1000.-
3 <sup>rd</sup> place:	EUR 500.-



## 13. CLOTHING

According to the Swiss Orienteering Competition Rule (WO Art. 54(2)(c)) it is forbidden to run with spike shoes in Switzerland. However, dobb spikes and normal orienteering shoes are allowed. Otherwise, there are no regulations on clothing, but it is recommended to cover arms and legs to avoid tick bites. Ticks might transmit Boreliosis and Meningo-Encephalitis.

## 14. ANTI-DOPING

Doping is forbidden. "Think positive – test negative"! IOF Anti-Doping Rules apply, valid as of January 1, 2015. The Swiss Orienteering Anti-Doping Rules are harmonised with the Anti-Doping Rules and procedures of the Swiss Olympic Association and apply as well. Both, the IOF and/or the Swiss Olympic Association can order doping tests at any time during the stay of the participants of World Cup Final 2017 in Switzerland. By their signature given at the event registration upon arrival, the athletes and coaches will accept that they are subject to sanctions in the event of any doping offence. The teamleader will have to sign for the whole team.

## 15. WEATHER&CLIMATE

Average temperatures in Grindelwald at the end of September can be everything between 0 and 20° C in daytime. Please be aware and bring enough clothes for competing on an altitude from 1000 to 1900 meters above sea level.

## 16. VISA PERMITS

The prerequisite for immigration into Switzerland is a valid passport. For travellers from certain countries a visa or further documents are required. Please check with your embassy if you need visa permits. <https://www.bfm.admin.ch/bfm/en/home/themen/einreise.html>.

## 17. INSURANCE

The organisers decline any liability that might occur through participation in IOF World Cup Events 9 and 10, Sprint Relay and trainings. Each person participates at their own risk and is responsible for their own insurance coverage (illness and accident).

## 18. MEDIA SERVICES

We welcome all media representatives as our partners to broadcast the thrilling events of World Cup Final 2017 to a broad public.

For media accreditation please contact Severin Furter:  
Mobile +41 79 602 99 72  
[media@ol-weltcup.ch](mailto:media@ol-weltcup.ch)

## 19. INFORMATION

EGK OL-Weltcupfinal 2017  
Matthias Niggli  
Luchliweg 5A  
CH-3110 Münsingen  
Tel +41 31 721 52 68  
Mobile +41 79 222 13 87  
[matthias.niggli@ol-weltcup.ch](mailto:matthias.niggli@ol-weltcup.ch)  
[www.ol-weltcup.ch](http://www.ol-weltcup.ch)

Bulletin 3 will be published by 31 July 2017.  
Final details will be released in Bulletin 4 upon arrival at the Event Centre in Grindelwald and on the homepage on 27 September 2017.  
See you soon!  
The Organising Committee and Swiss Orienteering are pleased to welcome all orienteering friends to another spectacular orienteering event in Switzerland!

© Pictures by Rémy Steinegger, Jungfrau Region/David Birri

Presenting Partner



Main Sponsors



Co-Sponsors



Host Region



on behalf of





# Mein Gesundheits- vorsprung: Komplementär

Simone Niggli-Luder:  
Ich orientiere mich laufend am Ziel.  
Die EGK orientiert sich  
laufend an der Gesundheit.  
Gemeinsam erarbeiten wir uns den  
entscheidenden Vorsprung.  
Für den besten Gesundheitsweg.  
Auch für Sie.



[www.egk.ch/EGK-OL-Weltcupfinal](http://www.egk.ch/EGK-OL-Weltcupfinal)

Presenting Partner des EGK OL-Weltcupfinals

EGK-Gesundheitskasse | Brislachstrasse 2 | 4242 Laufen  
T 061 765 51 11 | F 061 765 51 12 | [info@egk.ch](mailto:info@egk.ch) | [www.egk.ch](http://www.egk.ch)

