

# MTBO Worldcup 2017

June 2 – 5, 2017 | Waldviertel, Austria  
Bulletin 1&2

## Content

1. Organizers
2. Event Advisor
3. Event Center
4. General Information
5. Location
6. Program
7. Classes and participation restrictions
8. Entries
9. Entry Fees
10. Account details for payment
11. Transport
12. Accommodation
13. Time keeping system
14. Maps
15. Embargoed Areas
16. Terrain description
17. Rules
18. Antidoping
19. Weather
20. Health Care
21. Visas
22. Training Opportunities
23. Media Services
24. Live Coverage
25. Bicycle Washing



## 1. Organizers

### IOF - International Orienteering Federation

[www.orienteering.org](http://www.orienteering.org)



### ÖFOL - Austrian Orienteering Federation

[www.oefol.at](http://www.oefol.at)

Prinz Eugen Str. 12,  
1030 Wien - Austria  
[office@oefol.at](mailto:office@oefol.at)  
+43 (0)1 5050393



### WMTBOC - organizing committee

3912 Grafenschlag 106  
Austria

[office.wmtboc2018@gmail.com](mailto:office.wmtboc2018@gmail.com)

<http://www.wmtboc2018.at/mtbowc2017/>



Event director:	Paul GRÜN
Event director - deputy:	Ewald MAYER
Event Center Administrator:	Karin IRK

## 2. Event Adviser

IOF adviser:	David HLAVAC
National adviser:	Wolfgang EBERLE

## 3. Event Center

### Vocational school "Landwirtschaftliche Fachschule (LFS) Edelhof"

Edelhof 1,  
3910 Zwettl - Austria

<https://www.lfs-edelhof.ac.at/>



## 4. General Information

Austrian orienteering federation welcomes the participant of the World Mountain Bike Orienteering Cup 2017 round 1 in Zwettl.

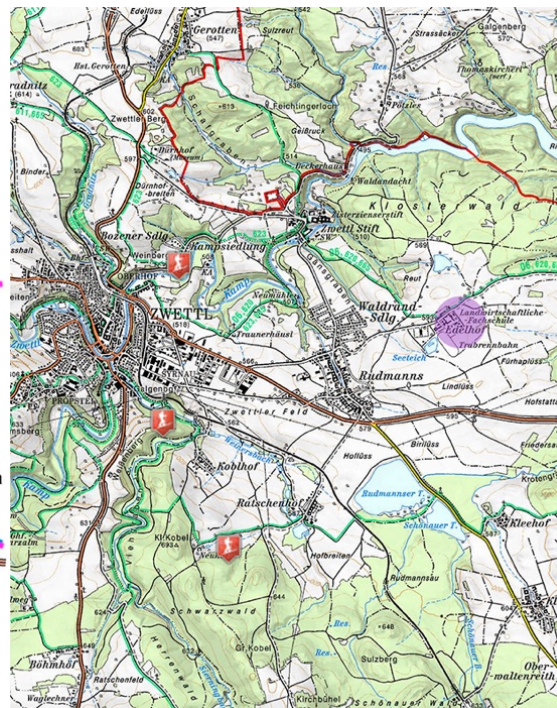
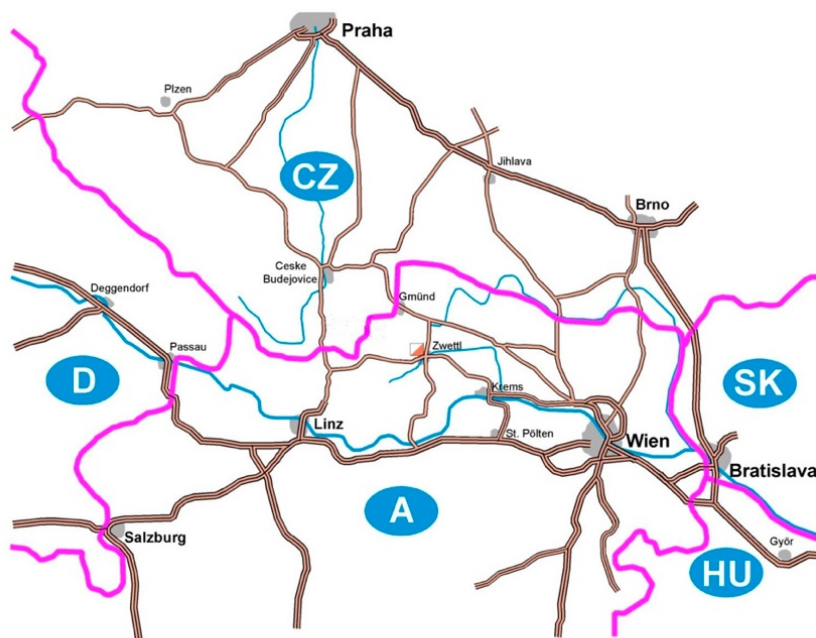
Zwettl (11.000 inhabitants, 520 m above sea level) is the Waldviertel district capital of the Austrian state of Lower Austria. It is chiefly known as the location of Zwettl Abbey, first mentioned in October 1139.

The Waldviertel (Forest Quarter) is the northwestern region of the Austrian state of Lower Austria. It is bounded to the south by the Danube, to the southwest by Upper Austria, to the northwest and the north by the Czech Republic and to the east by the Manhartsberg (537 m).



## 5. Location

**Event Center:** LFS Edelhof, 3km outside of Zwettl  
**Distance from int. airports:** Vienna 150km, Praha 230km



## 6. Program

<b>Friday, 2nd June</b>	Arrival & Model Event
<b>Saturday, 3rd June</b>	IOF - World Cup Middle
<b>Sunday, 4th June</b>	IOF - World Cup Sprint
<b>Monday, 5th June</b>	IOF - World Cup Long, Departure
<b>Tuesday, 6th June</b>	Departure

## 7. Classes and participation restrictions

### Classes

There is one class for women and one for men. There are no age restrictions.

### Competition Rules

IOF MTBO rules 2016

International specification for MTBO Orienteering Maps 2010

Special rules for MTBO World Cup 2017 (to be published by IOF)

### Participations

According Competition Rules for International orienteering Federation (IOF) Mountain Bike Orienteering (MTBO) Events 2016, 6.9 the number of competitors that every Federation may enter in each individual event shall be published annually.

## 8. Entries

### MTBO Worldcup

Entries have to be done via IOF eventor: <http://www.eventor.com/>

### Entry deadlines

**Preliminary entry by 20th February 2017, giving:**

- 📁 country
- 📁 number of competitors of each gender (preliminary)
- 📁 number of team officials
- 📁 category of accommodation
- 📁 team manager's name, address and telephone/fax numbers/email
- 📁 request for transportation

**Final entry and entry of teams by 11th April 2017 giving:**

- 📁 country
- 📁 number of competitors of each gender (final)
- 📁 accommodation and entry fees
- 📁 team manager's name, address and telephone/fax numbers
- 📁 each competitor's family name and first name, class or gender and year of birth
- 📁 detailed request for transportation
- 📁 information on whether the athlete needs a rental SI-card or uses his/her owns SI-card (also enter the SI-card number)
- 📁 family name and first name of each team official

**Full payment for entry fees by 11th April 2017.**

**Final modifications by 4th May 2017.**

## 9. Entry Fees

### World Cup

Accreditation fees (all participants: competitors and team officials) .....	30€ / person
Model event .....	10€ / person
Long distance .....	45€ / person
Middle distance .....	40€ / person
Sprint distance.....	35€ / person

## 10.Account details for payment

All payments are to be made to „OLZ UNION Waldviertel“ by bank transfer as follows

**(all charges are paid by sender)**

IBAN: AT22 3299 0000 0020 2705

SWIFT/BIC: RLNWATWWZWE

Entries to the World Cup and transport will be accepted and confirmed after the receipt of the transfer.

## 11.Transport

Local transportation to and from the event center will be offered for a fee for teams in need for such a service when ordering in advance (preliminarily request with first entry, detailed request with final entry).

Transportation to and from Zwettl to Vienne International Airport can be ordered from the organizers for a fee (preliminarily request with first entry, detailed request with final entry).

Please inform the organizers in due time of any assistance you require with transportation.

## 12.Accommodation

Three different categories of accomodation in the vocational school Edelhof are offered by the organizers to ensure that all participants can find a place that suits their need and budget.

All prices as of 2016 with half board per room and night:

Single room	€ 50,--
Double room	€ 90,--
Four-bed room (shower and toilets on the floor)	€ 150,--
Six-bed room (shower and toilets on the floor)	€ 210,--
Hard floor (class room, max. 8 persons)	€ 200,--
Tent place (400m from EC, with half board in EC)	€ 20,-- pp./night

For information to the offered accommodation and booking, contact

Karin IRK – [karin.irk@gmx.at](mailto:karin.irk@gmx.at)



## 13. Time keeping system

SPORTident will be used on all events with SI-Card 10/11 compatible Control Stations.

Everybody should provide the number of their SI cards with the entry.

SI cards can be rented from Organizers for 15€ / for the event (50€ deposit).



## 14. Maps

### New and updated MTB Orienteering maps

**Scales:** 1:7 500, 1:10 000, 1:15 000

**Contour intervals:** 5m

**Terrain Type:** hilly, various kinds of roads and paths.

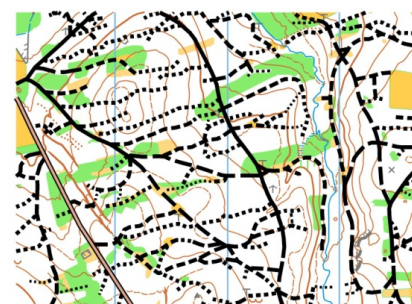
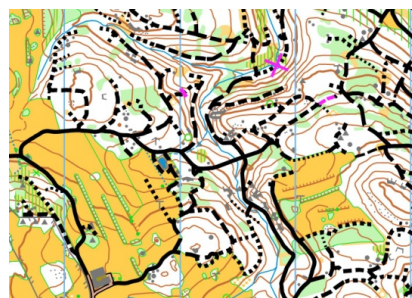
All events will be organized in accordance with the IOF International Specification for MTB Orienteering Maps (2010).

#### Map details

Long distance	1:15 000 / contour 5m
Middle distance	1:10 000 / contour 5m
Sprint distance	1:7 500 / contour 5m

The old maps of these areas are published on the event website:

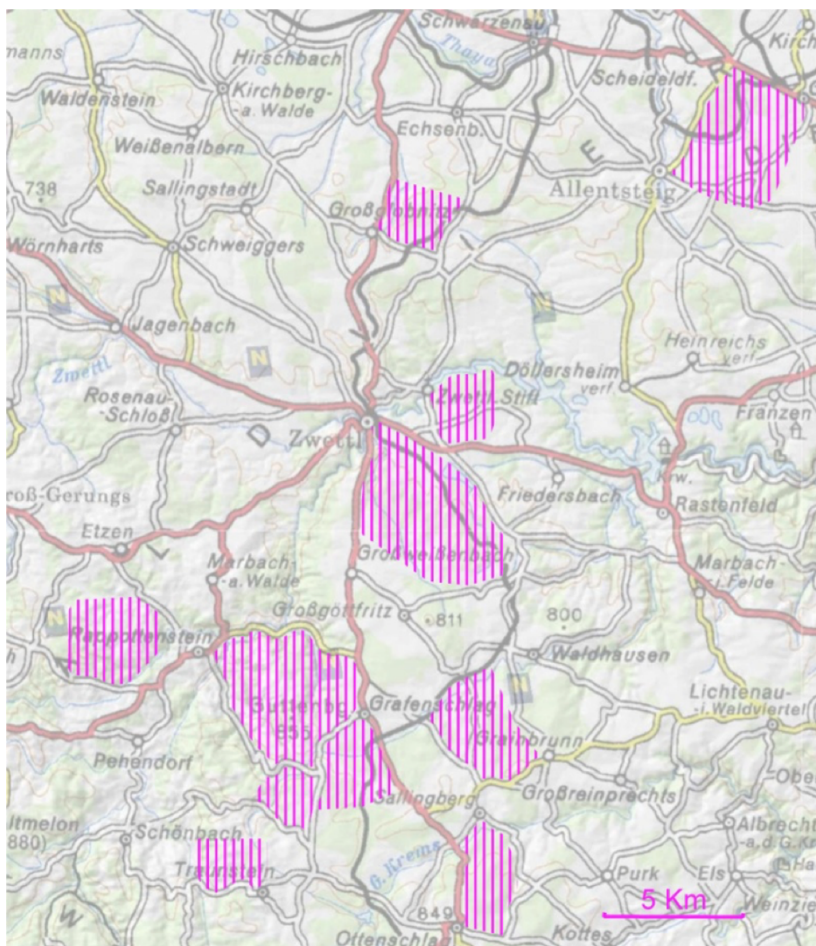
- Grafenschlag – Wielands (2010)
- Roiten – Süd (2011)
- Rapottenstein – Ost (2014)



## 15. Embargoed areas

The areas are out of bounds for all potential participants and team members, including competitors, team leaders, coaches, doctors, escorts, and any other person who through their knowledge of the terrain may influence the result of the competitions.

Permission for access into embargoed terrain has to be requested from the organizer if needed.



## 16. Terrain description

Alternately forest and open area, dense tracks network, mostly good rideability. Some tricky steep sections.

<b>Long distance:</b>	very hilly area with dense tracks network
<b>Middle distance:</b>	hilly area with tracks network
<b>Sprint distance:</b>	hilly area with forest and urban part

All the competitions area is open to public traffic. The courses cross several public roads. At critical places there will be marshal's to help safe crossing. Riders should follow the instruction of marshals. Still, it is the riders' responsibility to observe traffic rules and avoid unsafe practices.

## 17. Rules

All events will be organized in accordance with the Competition Rules for IOF MTB Orienteering Events, valid from 1 January 2016, and Special Rules for MTB Orienteering World Cup 2017.

Please consult: <http://orienteering.org/mtb-orienteering/rules/>

### In this specific event:

🚫 Riding off the track, trail or path is forbidden.

🚫 In Austria you drive on the RIGHT side of road.

Therefore you must ride on the RIGHT side on all roads and tracks.

Overtaking slower riders should be done by the LEFT.

## 18. Antidoping

Doping is forbidden. The IOF Anti-Doping Rules apply to all IOF events and the IOF Council may require doping control procedures to be conducted.

The IOF Council may decide special rules or norms which shall be followed, e.g. IOF Anti-Doping Rules.

## 19. Weather

Waldviertel is between 500 – 900m above sea level. Average temperature in June is 18,7° C, in the night about 8° C. Rain is possible (average 11 days in June).



## 20. Health Care

The Organizer will provide first aid at the competition centre and at the arenas of each event.

The Organizer will not bear costs connected to health insurance of participants. We recommend each individual to arrange their own personal health insurance. Participants take part at their own risk.

### THE NEAREST HOSPITAL

Landeskrlinikum Zwettl  
Propstei 5  
3910 ZWETTL  
+43 (0)2822 9004 0

## 21. Visas

### ENTRY PERMITS TO AUSTRIA

Austria is a full Schengen member state. You can find a list of countries which need a visa for Austria here:

[http://www.bmi.gv.at/cms/BMI\\_Fremdenpolizei/visumspflichten/start.aspx](http://www.bmi.gv.at/cms/BMI_Fremdenpolizei/visumspflichten/start.aspx)

Visas have to be applied for at your nearest Austria embassy. The Austrian Orienteering Federation - ÖFOL - will assist participants as required to obtain visas.

## 22. Training Opportunities

We will offer two training maps without control points for 31th May to 2nd June.

## 23. Media Services

Media representatives are cordially invited to Zwettl. Registration for media representatives should be done via email not later than 11th April 2017

### Contact

Nathalie Huber  
[nh@oefol.at](mailto:nh@oefol.at)

## 24. Live Coverage

Detailed information will be published in Bulletin 3 and Bulletin 4.

## 25. Bicycle washing

Bicycle washing facilities and storage will be available, detailed information will follow in Bulletin 3 and 4.